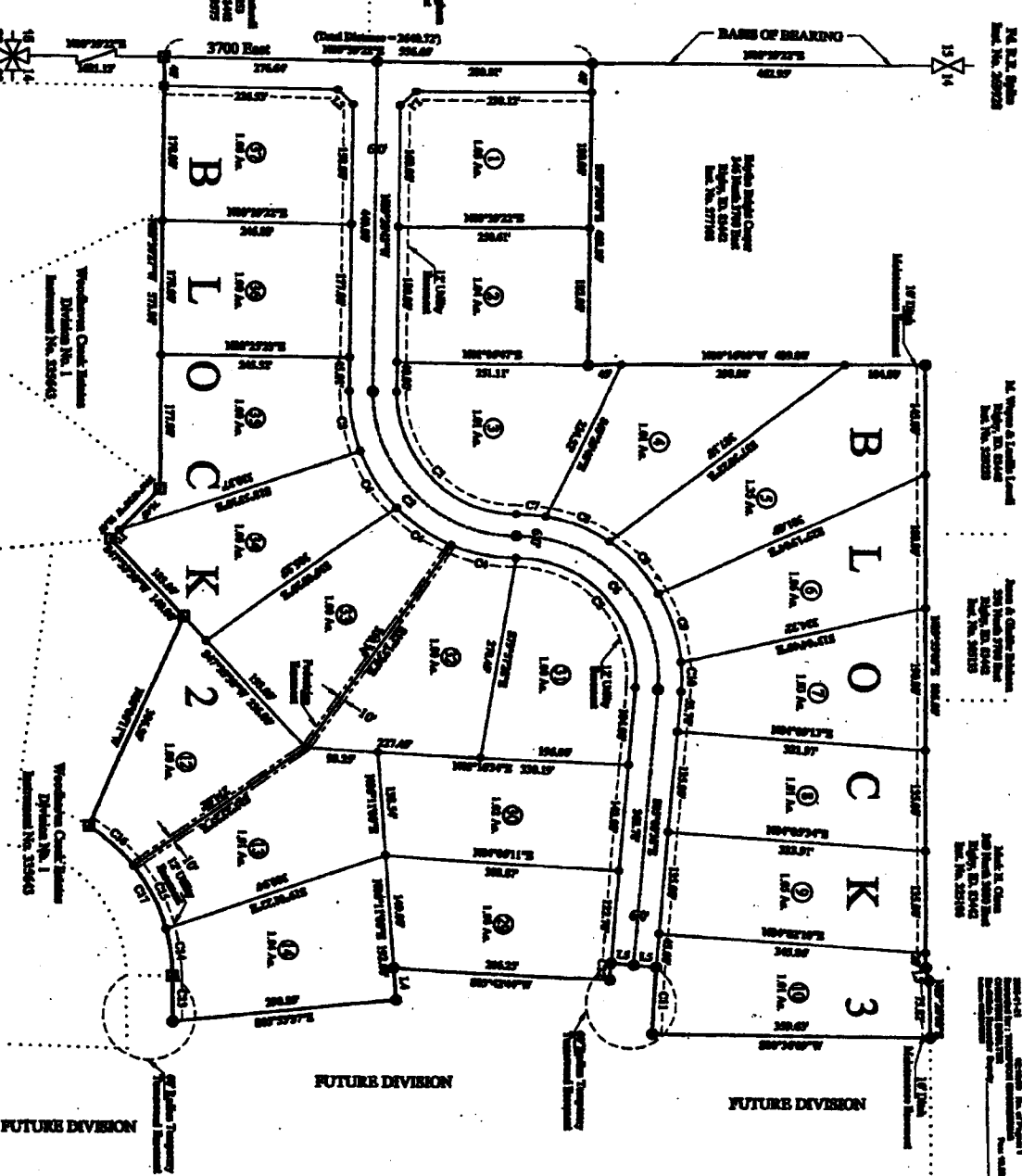
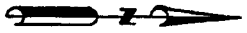


WOODHAVEN CREEK ESTATES

DIVISION NO. 2
JEFFERSON COUNTY, IDAHO
LOCATED IN THE SW 1/4 OF SECTION 14, T4N R3E, B1M.



14. R.2. Right
200' from 3700 East
100' from 3700 West
100' from 3700 North
100' from 3700 South

14. R.2. Right
200' from 3700 East
100' from 3700 West
100' from 3700 North
100' from 3700 South

14. R.2. Right
200' from 3700 East
100' from 3700 West
100' from 3700 North
100' from 3700 South

14. R.2. Right
200' from 3700 East
100' from 3700 West
100' from 3700 North
100' from 3700 South

14. R.2. Right
200' from 3700 East
100' from 3700 West
100' from 3700 North
100' from 3700 South

Curve No.	Delta	Radius	Arc
C1	90°00'00"	150.00'	251.33'
C2	90°00'00"	150.00'	250.43'
C3	21°00'00"	220.00'	80.63'
C4	21°00'00"	220.00'	80.31'
C5	9°20'00"	150.00'	263.43'
C6	9°20'00"	150.00'	312.82'
C7	10°00'00"	220.00'	36.45'
C8	24°00'00"	220.00'	92.15'
C9	24°00'00"	220.00'	92.99'
C10	10°20'00"	220.00'	30.62'
C11	10°20'00"	181.67'	82.26'
C12	0°45'35"	1711.67'	22.26'
C13	0°10'00"	2710.00'	60.48'
C14	15°00'24"	220.00'	63.59'
C15	23°00'24"	220.00'	52.97'
C16	20°00'00"	220.00'	80.23'
C17	20°00'00"	220.00'	206.84'

Line No.	Bearing	Distance
L1	N44°20'47"W	28.23'
L2	N45°39'19"E	28.23'
L3	N75°50'53"E	18.12'
L4	N88°11'00"E	43.00'
L5	S04°39'22"W	30.00'

NOTES: This subdivision is to be in accordance with the 200-year flood protection...
 1. The subdivision is to be in accordance with the 200-year flood protection...
 2. The subdivision is to be in accordance with the 200-year flood protection...
 3. The subdivision is to be in accordance with the 200-year flood protection...
 4. The subdivision is to be in accordance with the 200-year flood protection...
 5. The subdivision is to be in accordance with the 200-year flood protection...



TE THOMPSON ENGINEERING, INC.
CONSULTING ENGINEERS
RBBBY, IDAHO 83442

FINAL PLAT

LOCATED IN THE SW 1/4 OF SECTION 14, TOWNSHIP 4 NORTH, RANGE 33 EAST, JEFFERSON COUNTY, IDAHO

Project Name:	Dennis Gray	Scale:	1" = 100'
Job Number:	2004-28	Drawn By:	K.L.T.
Code File:	Gray/Dennis/2004-28	Checked By:	D.O.R.
Date:	October 24, 2005	Sheet:	2
Surveyor:	K.L.T.	Of:	2
Drawn By:	D.O.R.		

LEGEND

- 3/4" 5/8" X 3/8" Iron Rod W/Chip No. 10683
- 3/4" 1/2" X 3/8" Iron Rod W/Chip No. 10683
- 21 Lines
- 22 Lines
- 23 Lines
- 24 Lines
- 25 Lines
- 26 Lines
- 27 Lines
- 28 Lines
- 29 Lines
- 30 Lines
- 31 Lines
- 32 Lines
- 33 Lines
- 34 Lines
- 35 Lines
- 36 Lines
- 37 Lines
- 38 Lines
- 39 Lines
- 40 Lines
- 41 Lines
- 42 Lines
- 43 Lines
- 44 Lines
- 45 Lines
- 46 Lines
- 47 Lines
- 48 Lines
- 49 Lines
- 50 Lines
- 51 Lines
- 52 Lines
- 53 Lines
- 54 Lines
- 55 Lines
- 56 Lines
- 57 Lines
- 58 Lines
- 59 Lines
- 60 Lines
- 61 Lines
- 62 Lines
- 63 Lines
- 64 Lines
- 65 Lines
- 66 Lines
- 67 Lines
- 68 Lines
- 69 Lines
- 70 Lines
- 71 Lines
- 72 Lines
- 73 Lines
- 74 Lines
- 75 Lines
- 76 Lines
- 77 Lines
- 78 Lines
- 79 Lines
- 80 Lines
- 81 Lines
- 82 Lines
- 83 Lines
- 84 Lines
- 85 Lines
- 86 Lines
- 87 Lines
- 88 Lines
- 89 Lines
- 90 Lines
- 91 Lines
- 92 Lines
- 93 Lines
- 94 Lines
- 95 Lines
- 96 Lines
- 97 Lines
- 98 Lines
- 99 Lines
- 100 Lines

ACRES

- 2813 Acres
- 2267 Acres
- 246 Acres

LEGEND

- 3/4" 5/8" X 3/8" Iron Rod W/Chip No. 10683
- 3/4" 1/2" X 3/8" Iron Rod W/Chip No. 10683
- 21 Lines
- 22 Lines
- 23 Lines
- 24 Lines
- 25 Lines
- 26 Lines
- 27 Lines
- 28 Lines
- 29 Lines
- 30 Lines
- 31 Lines
- 32 Lines
- 33 Lines
- 34 Lines
- 35 Lines
- 36 Lines
- 37 Lines
- 38 Lines
- 39 Lines
- 40 Lines
- 41 Lines
- 42 Lines
- 43 Lines
- 44 Lines
- 45 Lines
- 46 Lines
- 47 Lines
- 48 Lines
- 49 Lines
- 50 Lines
- 51 Lines
- 52 Lines
- 53 Lines
- 54 Lines
- 55 Lines
- 56 Lines
- 57 Lines
- 58 Lines
- 59 Lines
- 60 Lines
- 61 Lines
- 62 Lines
- 63 Lines
- 64 Lines
- 65 Lines
- 66 Lines
- 67 Lines
- 68 Lines
- 69 Lines
- 70 Lines
- 71 Lines
- 72 Lines
- 73 Lines
- 74 Lines
- 75 Lines
- 76 Lines
- 77 Lines
- 78 Lines
- 79 Lines
- 80 Lines
- 81 Lines
- 82 Lines
- 83 Lines
- 84 Lines
- 85 Lines
- 86 Lines
- 87 Lines
- 88 Lines
- 89 Lines
- 90 Lines
- 91 Lines
- 92 Lines
- 93 Lines
- 94 Lines
- 95 Lines
- 96 Lines
- 97 Lines
- 98 Lines
- 99 Lines
- 100 Lines