

ZUNDEL SUBDIVISION

DIVISION NO. 2

A PORTION OF THE SOUTHWEST 1/4 OF SEC. 24 T. 4 N. R. 38 E.B.M.

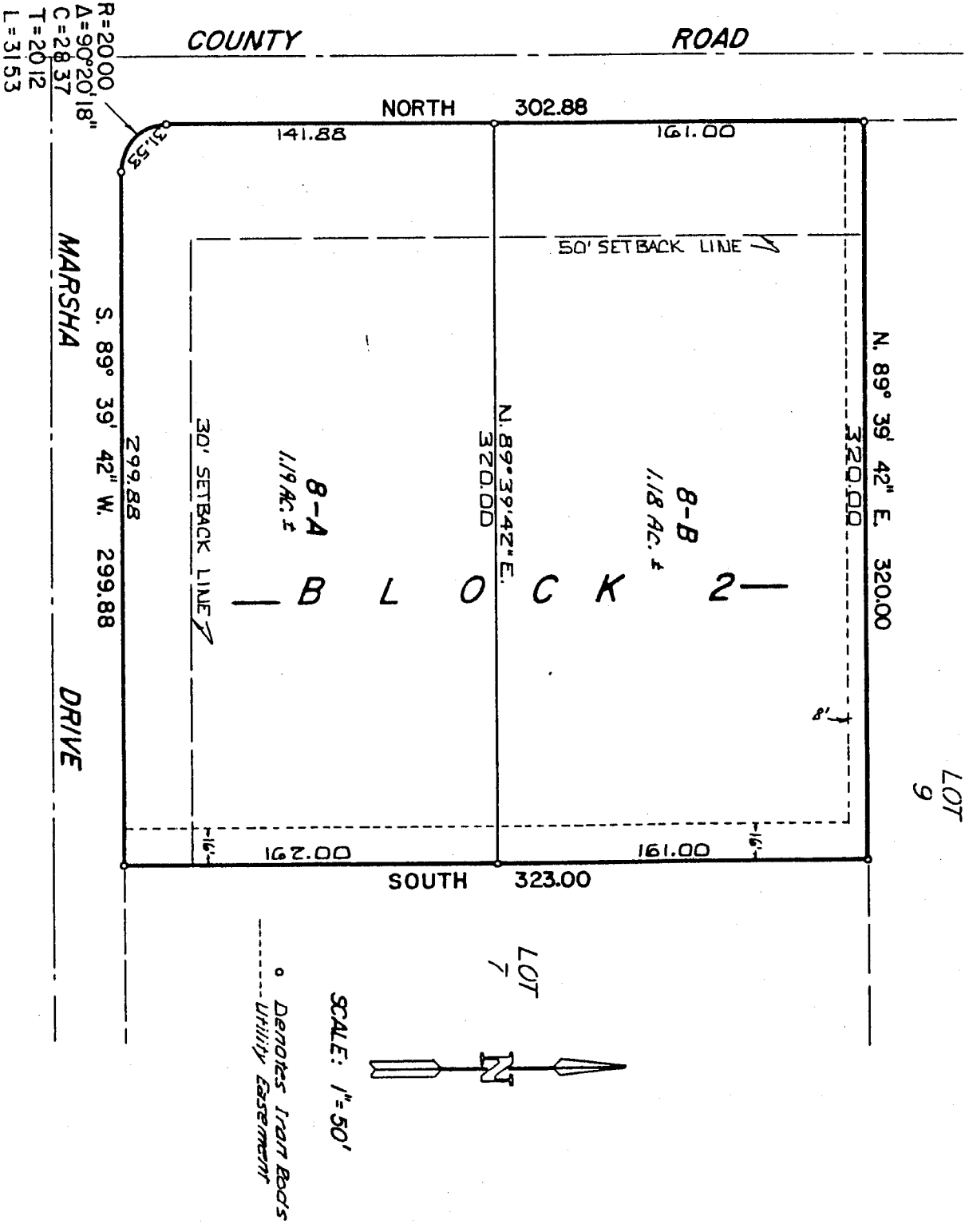
[ELLSWORTH ENGINEERING, INC.]
IDAHO FALLS, IDAHO

CONSISTING OF A REPLAT OF LOT 8 BLOCK 2 ZUNDEL SUBDIVISION
DIVISION NO. 2

LOT
9

FIRST AMERICAN TITLE COMPANY

While this is a photographic reproduction of the recorded plat, the Company assumes no liability for variations, if any, with a re-survey.



R=2000
A=90°20'18"
C=28.37
T=2012
L=3153