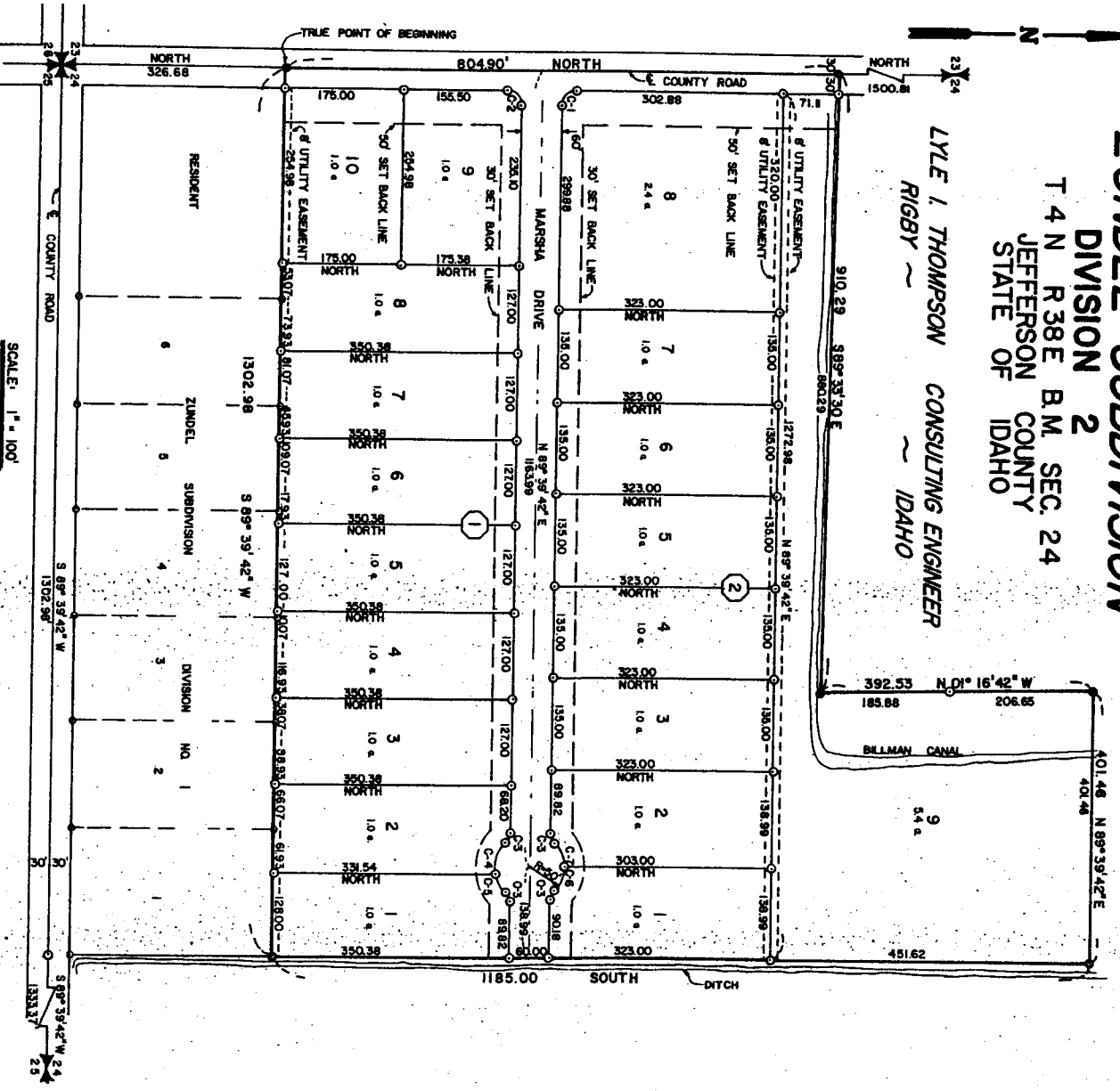


ZUNDEL SUBDIVISION

DIVISION 2
 T 4 N R 38 E B.M. SEC. 24
 JEFFERSON COUNTY
 STATE OF IDAHO

LYLE I. THOMPSON CONSULTING ENGINEER
 RIGBY, IDAHO



While this is a photographic reproduction of the recorded plat, the Company assumes no liability for variations, if any, with a re-survey.

RIGBY TITLE & DEVELOPMENT
 COMPANY, INC.
 RIGBY, IDAHO