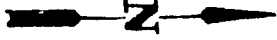


# AL - STD ADDITION

TO THE CITY OF IDAHO FALLS, BONNEVILLE COUNTY, IDAHO  
 UNPLAYED ELLSWORTH ENGINEERING, INC.  
 IDAHO FALLS, IDAHO



First American Title Company

Idaho Falls, Idaho 83404

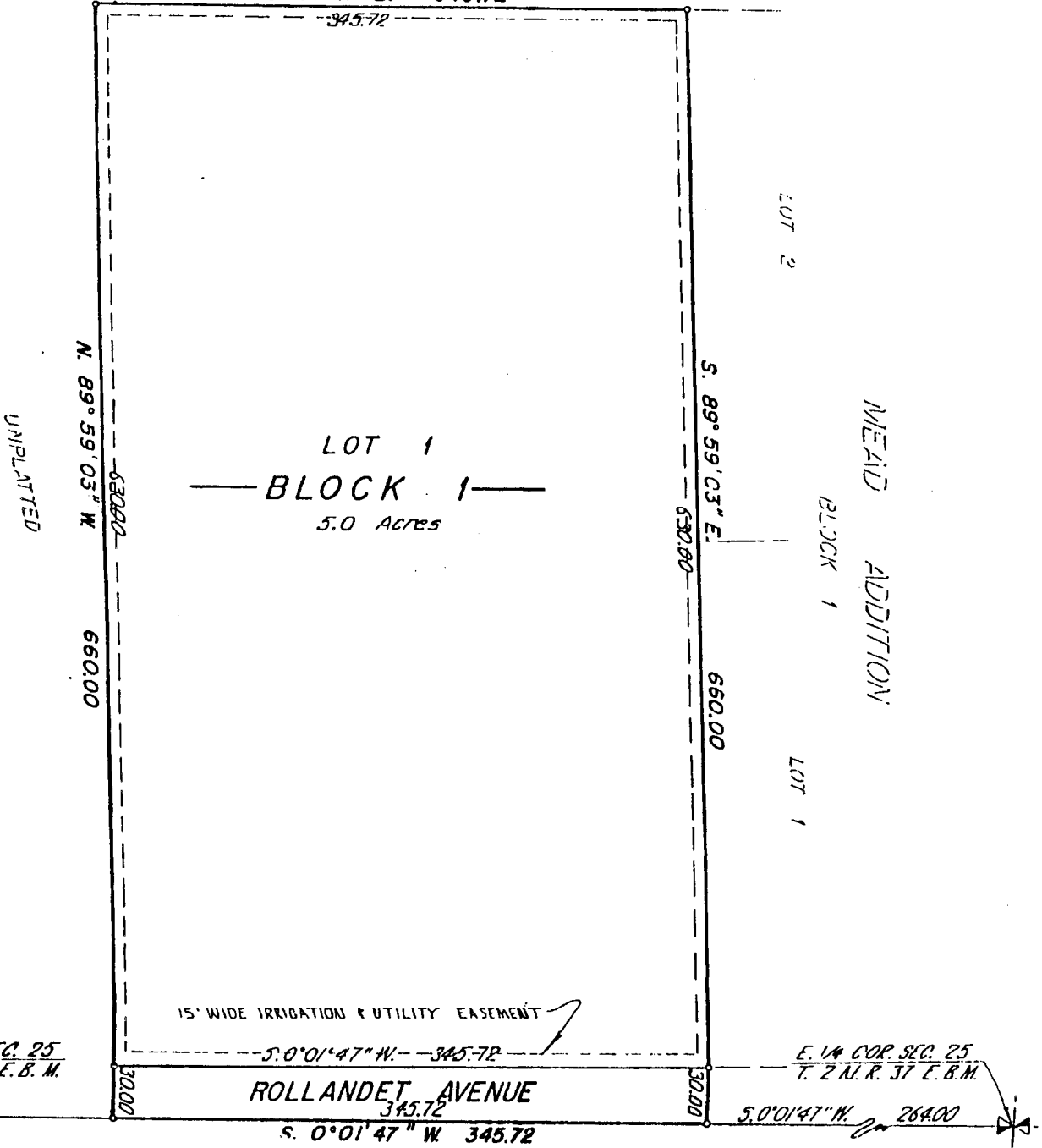
This sketch is made solely for the purpose of assisting in locating the premises. The company assumes no liability for alleged loss or damage which may result from reliance on this map.



o Denotes Iron Rods  
 --- UTILITY EASEMENTS 10' WIDE  
 UNLESS OTHERWISE NOTED.

UNPLAYED

N. 0° 01' 47" E. 345.72



ROLLANDET AVENUE

S. 0° 01' 47" W. 345.72

E. 1/4 COR. SEC. 25  
 T. 2 N. R. 37 E. B.M.

S. 0° 01' 47" W. 284.00

S.E. COR. SEC. 25  
 T. 2 N. R. 37 E. B.M.

30.00

30.00

UNPLAYED

MEAD ADDITION

LOT 2

BLOCK 1

LOT 1

LOT 1

BLOCK 1

5.0 Acres

15' WIDE IRRIGATION & UTILITY EASEMENT