

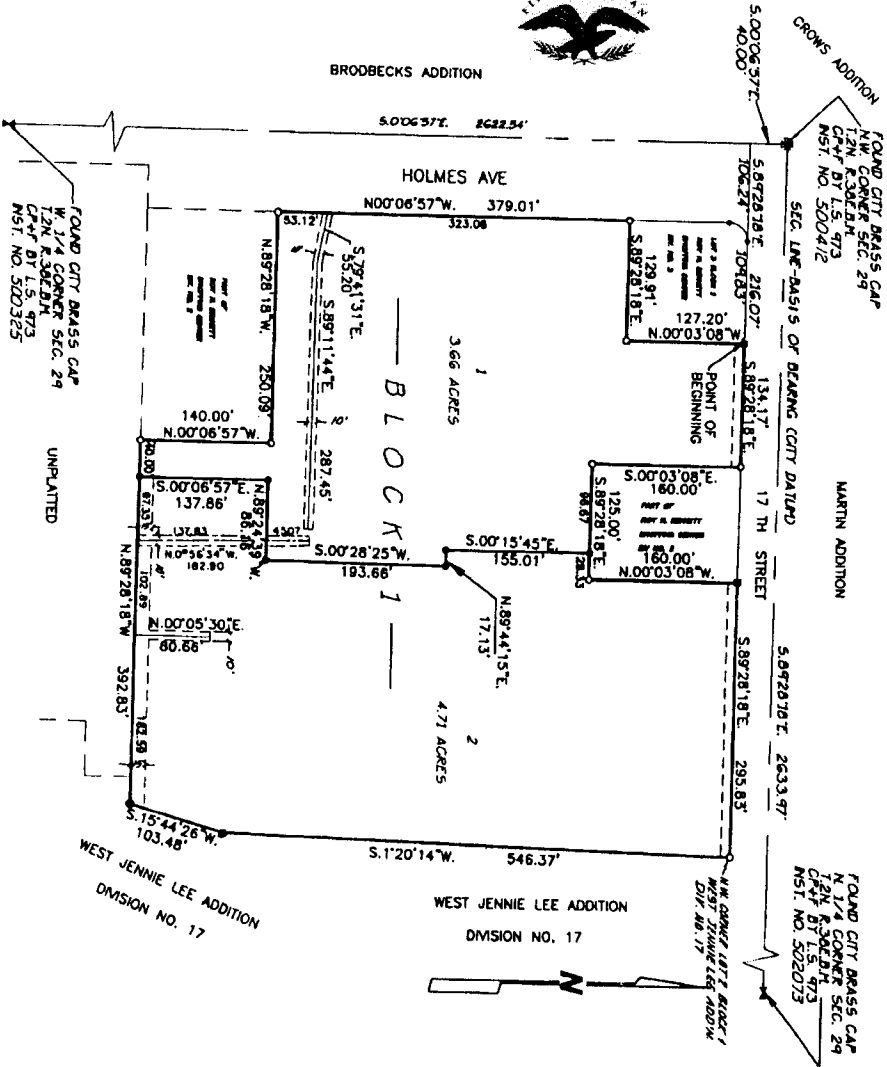
ALBERTSONS ADDITION DIVISION NO. 1

**TO THE CITY OF IDAHO FALLS, BONNEVILLE COUNTY, IDAHO
BEING A REPLAT OF A PART OF DIVISIONS NO. 1 AND 2, ROY H. BENNETT SHOPPING CENTER
AND PART OF LOT 1, BLOCK 1, WEST JENNIE LEE ADDITION, DIVISION NO. 17
IN THE N.W. 1/4 OF SECTION 29 T. 2 N. R. 38 E.B.M.**

First American Title Company

Idaho Falls, Idaho 83404

This sketch is made solely for the purpose of assisting in locating the premises. The company assumes no liability for alleged loss or damage which may result from reliance on this map.



LEGEND & NOTES

- 5/8" x 3/8" Steel Pinset set with rubber cap stamped (L.S.27)
 - 1/2" x 3/4" Steel Pinset set with plastic cap stamped (L.S.27)
 - Steel Pinset found with accompanying No. 04425
1. This plat made solely for assistance in locating premises. The company assumes no liability for alleged loss or damage which may result from reliance on this map.
2. Checked X shows back of wall.