

# ALICE DIVISION NO. 8

TO THE CITY OF IDAHO FALLS, BONNEVILLE COUNTY, IDAHO  
 A PORTION OF THE N.W. 1/4 OF SEC. 23 T. 2 N. R. 37 E. B.M.

ELLSWORTH ENGINEERING, INC.  
 IDAHO FALLS, IDAHO

N. 1/4 COR. SEC. 23  
 T. 2 N. R. 37 E. B.M.

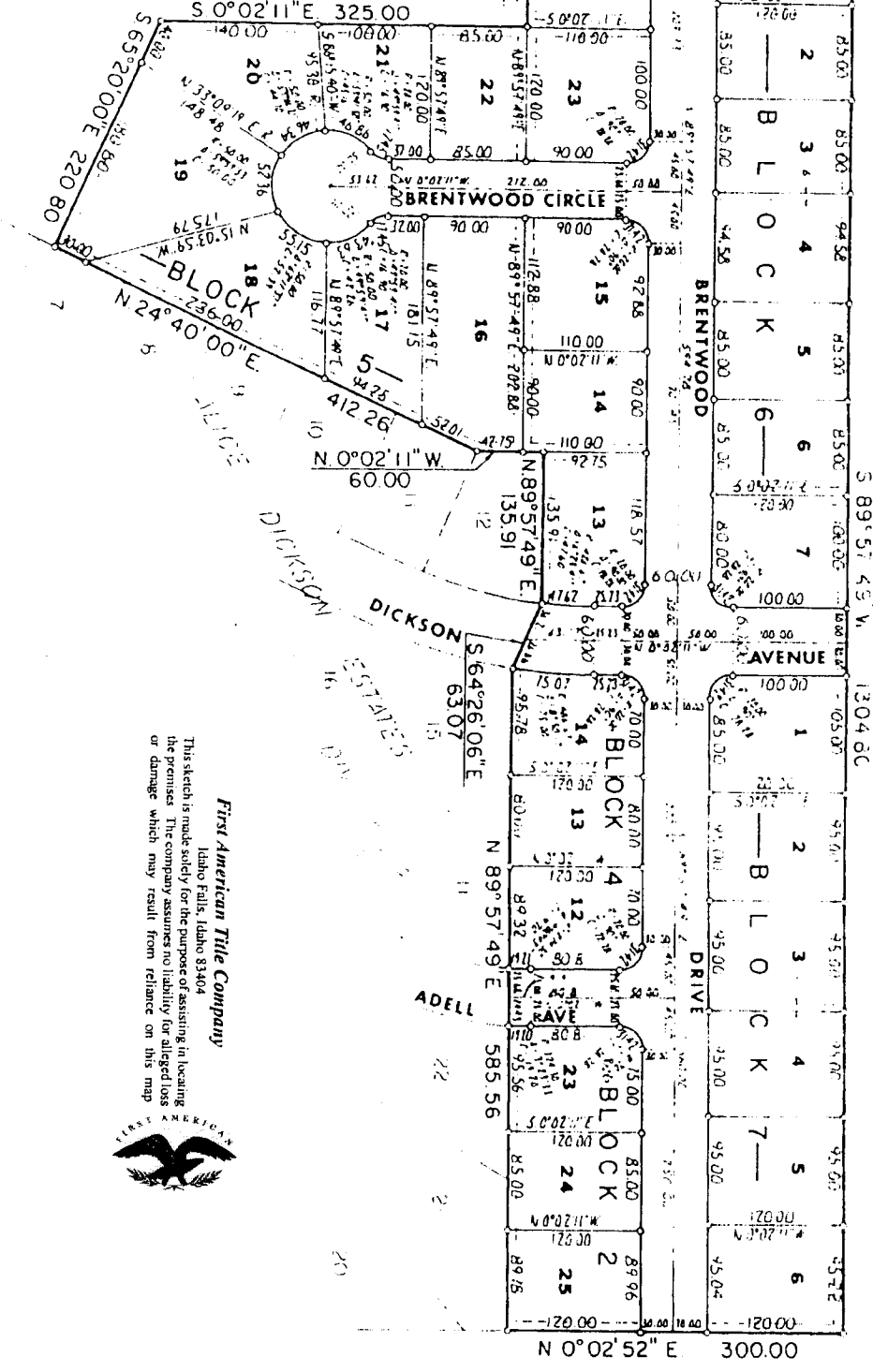
LOCAL ELEVATION = 1100

SECTION 23  
 T. 2 N. R. 37 E. B.M.

N. 1/4 COR. SEC. 23  
 T. 2 N. R. 37 E. B.M.

1305.35

UNAPPORTIONED



This sketch is made solely for the purpose of assisting in locating the premises. The company assumes no liability for alleged loss or damage which may result from reliance on this map.



First American Tile Company  
 Idaho Falls, Idaho 83404