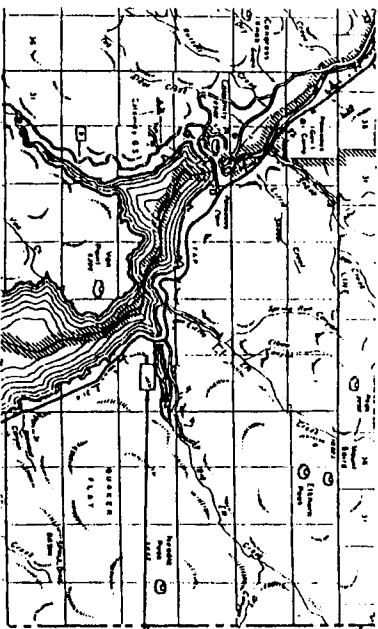


ALLEN RIDGE ESTATES SUBDIVISION

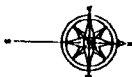
DIVISION NO. 1
 BONNEVILLE COUNTY, IDAHO
 PART OF THE SE1/4 OF THE NW1/4 OF SECTION 24, T15S, R45E B.M.

First American Title Company

Idaho Falls, Idaho 83404
 This sketch is made solely for the purpose of assisting in locating the premises. The company assumes no liability for alleged loss or damage which may result from reliance on this map.



USFS MONUMENT
 INST. # 980221



CURVE DATA

CURVE NO.	DELTA	RADIUS	ARC	CHORD	TANGENT
C1	182° 59' 52"	98.00'	89.15'	77.81'	61.93'
C2	182° 59' 52"	98.00'	142.65'	124.49'	99.88'
C3	52° 35' 28"	78.00'	114.43'	124.49'	99.88'
C4	52° 35' 28"	78.00'	58.46'	143.88'	186.58'
C5	52° 35' 28"	78.00'	12.08'	12.79'	85.74'
C6	87° 19' 53"	180.00'	42.18'	41.87'	85.41'
C7	24° 18' 11"	180.00'	42.18'	41.87'	21.41'

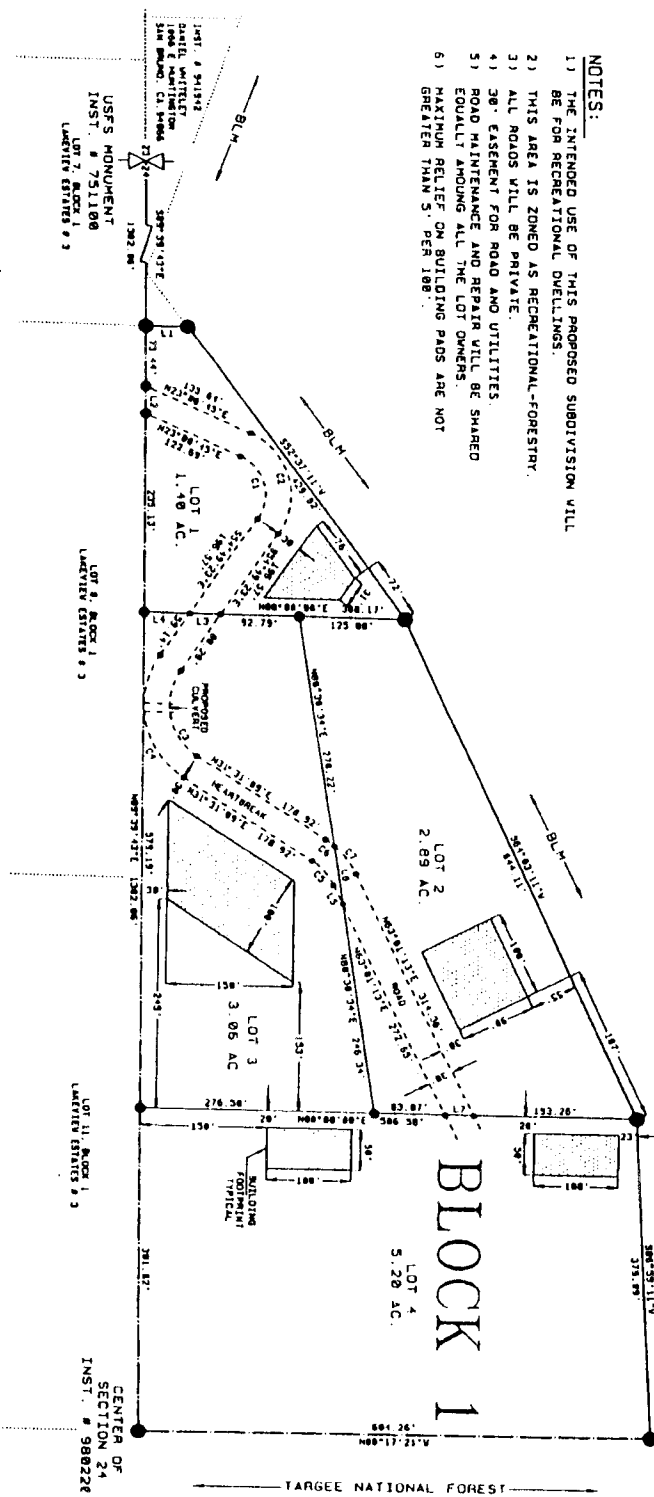
NOTES:

- 1) THE INTENDED USE OF THIS PROPOSED SUBDIVISION WILL BE FOR RECREATIONAL DWELLINGS.
- 2) THIS AREA IS ZONED AS RECREATIONAL-FORESTRY.
- 3) ALL ROADS WILL BE PRIVATE.
- 4) 30' EASEMENT FOR ROAD AND UTILITIES.
- 5) ROAD MAINTENANCE AND REPAIR WILL BE SHARED EQUALLY AMONG ALL THE LOT OWNERS.
- 6) MAXIMUM RELIEF ON BUILDING PADS ARE NOT GREATER THAN 5' PER 100'.

LINE DATA

LINE NO.	BEARING	DISTANCE
L1	S80°21'22"E	49.24'
L2	N89°39'43"E	32.68'
L3	N88°08'08"E	53.78'
L4	N88°08'08"E	53.78'
L5	N63°01'13"E	26.44'
L6	N88°38'34"E	26.85'
L7	N88°08'08"E	33.86'

LEGEND
 FD, USFS 3" AL./CAP
 1/2" FROM ROAD WITH CAP # 854
 NO POINTS SET
 1/4" LINE



CENTER OF SECTION 24
 INST. # 980228

LOT 11, BLOCK 1
 LATER ESTATES # 3

LOT 6, BLOCK 1
 LATER ESTATES # 3

USFS MONUMENT
 INST. # 751108
 LOT 7, BLOCK 1
 LATER ESTATES # 3

LOT 4, BLOCK 1
 LATER ESTATES # 3
 INST. # 98044
 SAN BERNARD, CA 94004