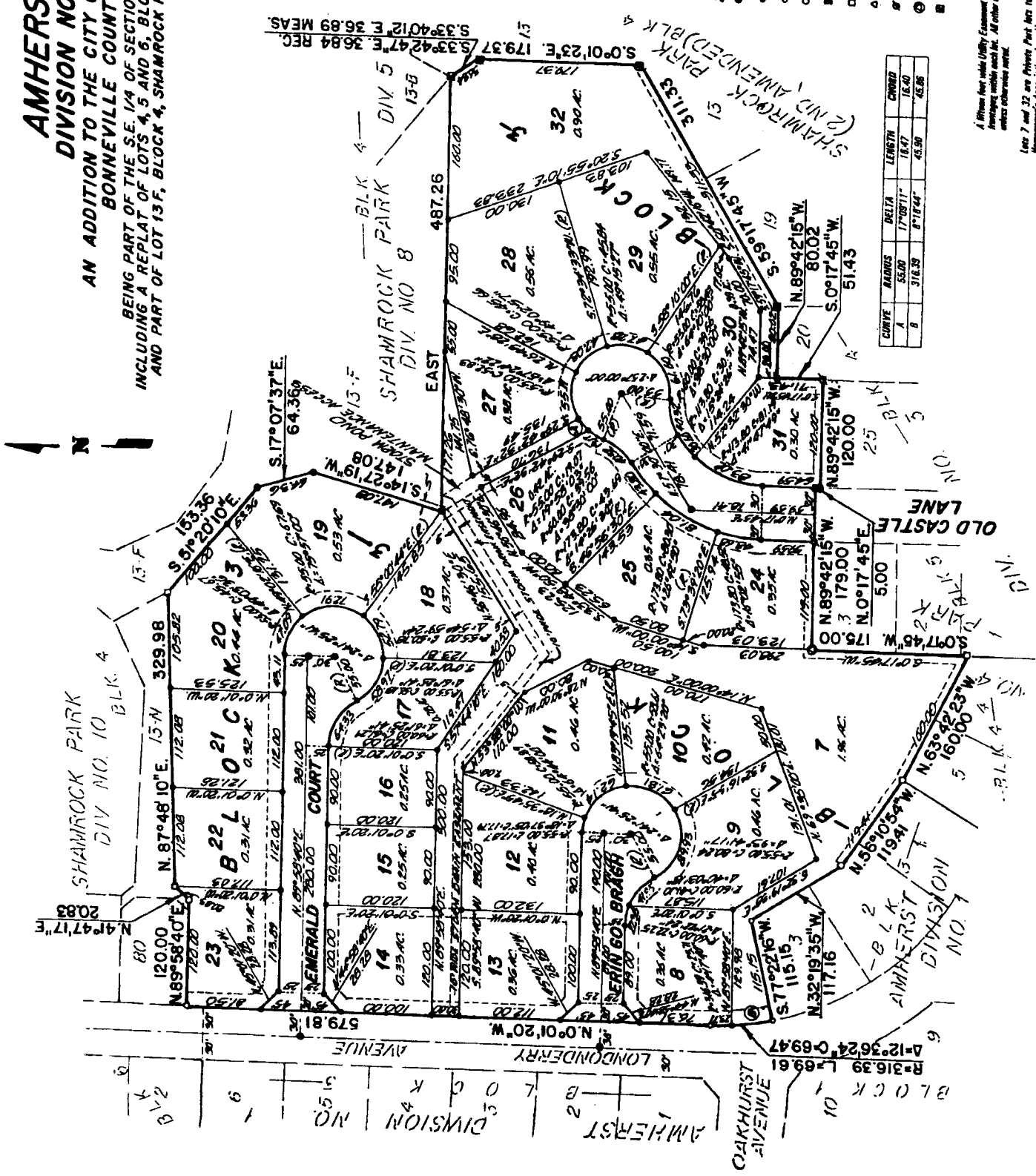


AMHERST DIVISION NO. 2

AN ADDITION TO THE CITY OF IDAHO FALLS,
BONNEVILLE COUNTY, IDAHO
BEING PART OF THE S.E. 1/4 OF SECTION 29 T. 2 N. R. 38 E. B. M.
INCLUDING A REPLAT OF LOTS 4, 5 AND 6, BLOCK 3, AMHERST, DIVISION NO. 1
AND PART OF LOT 13, BLOCK 4, SHAMROCK PARK ADDITION, DIVISION NO. 8



LEGEND & NOTES

- 50" x 30" Steel Re-bar set with plastic cap stamped L.S.8795
- 12" x 24" Steel Re-bar set with plastic cap stamped L.S.8795
- 12" Steel Re-bar found with caps stamped L.S.8795
- 50" Steel Re-bar found with caps stamped L.S.8795
- 12" Steel Re-bar found with caps stamped L.S.7980
- 12" Steel Re-bar found with caps stamped L.S.790
- △ 12" Steel Re-bar found with caps stamped L.S.772
- ☆ 12" Steel Re-bar found with no cap
- ⊙ Magnetic nail with tag set
- ⊞ Choker 1/2 in width

CURVE	RADIUS	DELTA	LENGTH	CHORD
A	55.00	17°09'17"	16.47	16.40
B	316.39	8°17'44"	45.90	45.85

A 100mm bar with (100) Easement is hereby granted along all road frontages visible on this plat. All other easements are right here noted unless otherwise noted.

Lots 7 and 32 are Private Park lots to be owned and maintained by the Shamrock Park Homeowner's Association, Inc. However, the City of Idaho Falls is hereby granted access to and from the Shamrock Park Storm Retention Pond, for maintenance and repair thereof as is reasonably necessary, over the property shown on this plat as "Storm Pond Maintenance Access".



First American Title Company
Idaho Falls, Idaho 83404

This sketch is made solely for the purpose of assisting in locating the premises. The company assumes no liability for alleged loss or damage which may result from reliance on this map.