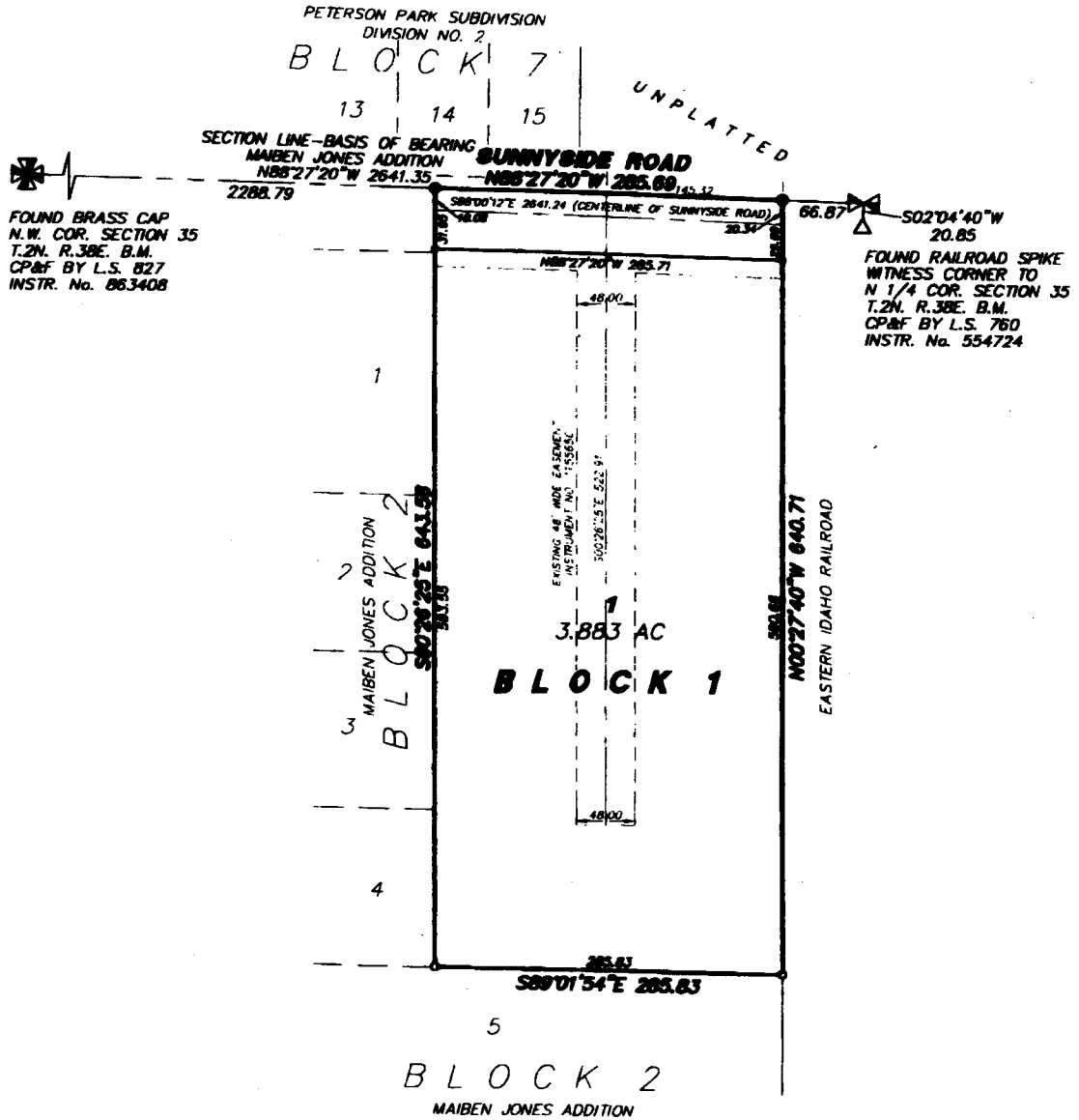


AMMON ELEVATOR ADDITION

DIVISION NO. 1

AN ADDITION TO THE CITY OF AMMON, BONNEVILLE COUNTY, IDAHO

BING PART OF THE N.W. 1/4 OF SECTION 35, T.2N, R.38E. B.M.



LEGEND & NOTES

- 56" x 30" Steel rebar set with plastic cap stamped L.S.8795
- 1/2" x 24" Steel rebar set with plastic cap stamped L.S.8795
- 1/2" Steel rebar found with no cap

— A fifteen foot wide Utility Easement is hereby reserved along all road frontages within each lot. All other utility easements are noted otherwise.

First American Title Company
Idaho Falls, Idaho 83404

While this is a photographic reproduction of the recorded plat, the Company assumes no liability for variations, if any, with a re-survey.

According to the FEMA Flood Plain FIRM map City of Ammon, Idaho, Bonneville County Community Panel No. 1600280001 effective April 2, 2002 this subdivision lies in Zone AO (Depth 1) Flood depths of 1 to 3 feet (usually sheet flow on sloping terrain); average depths determined. For areas of situational flooding; velocities also determined.