

AMMON ELEVATOR PLAZA

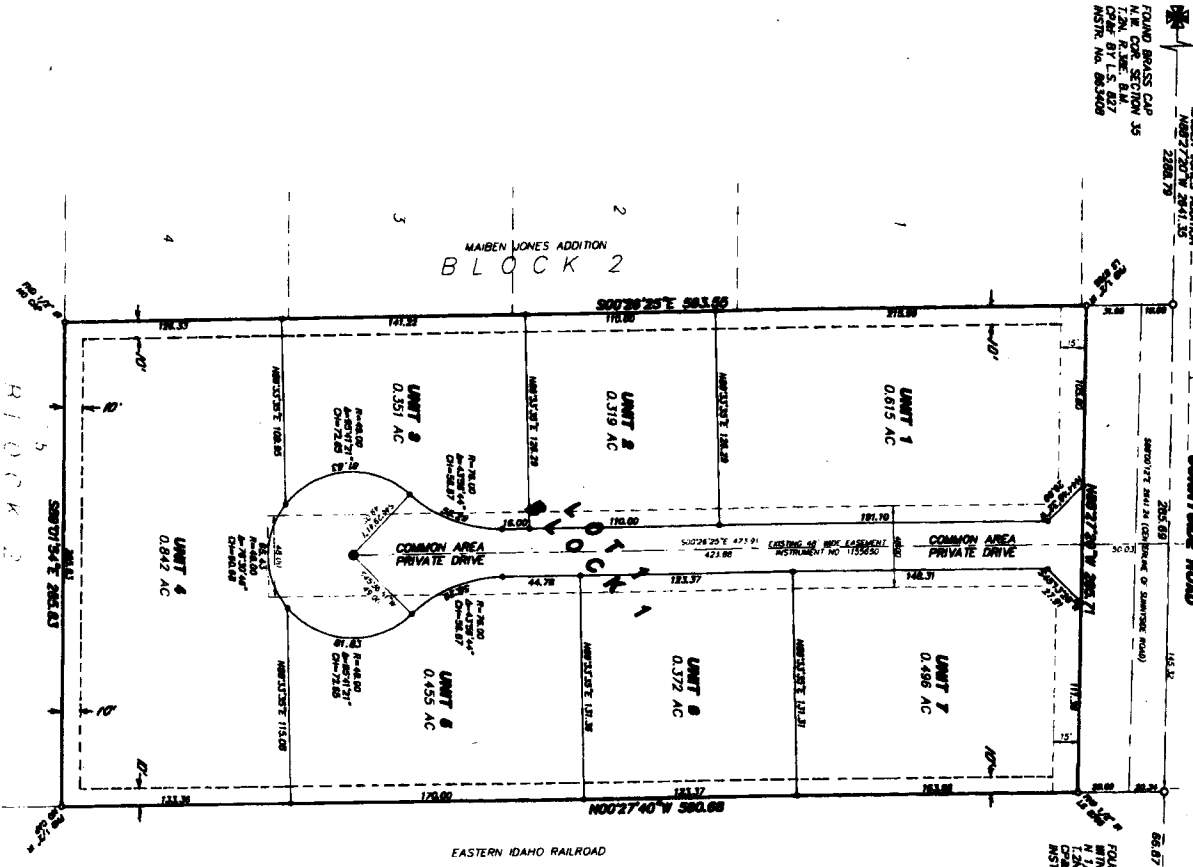
PURSUANT TO DAVID CODE, TITLE 84, CHAPTER 15
 LOCATED IN LOT 1, BLOCK 1, AMMON ELEVATOR ADDITION, DAWSON NO. 1
 CITY OF AMMON, BONNEVILLE COUNTY, IDAHO

PETROLEUM PARK SUBDIVISION
 DIVISION NO. 2
 BLOCK 7
 UNPLATTED

First American Title Company
 Idaho Falls, Idaho 83404
 While this is a photographic reproduction of the recorded plat, the Company assumes no liability for variations, if any, with a re-survey.

FOUND BRASS CAP
 N.W. COR. SECTION 35
 1/4 SEC. 35, T. 24 N., R. 20 E., B. 1
 DIST. No. 86,509

FOUND PAID ROAD SPINE
 WITNESS CORNER TO
 N 1/4 COR. SECTION 35
 1/4 SEC. 35, T. 24 N., R. 20 E., B. 1
 DIST. No. 58,724



LEGEND & NOTES

- 1/2" Show the bar found with public right surveyed I.S. 8795 unless otherwise noted
 - 1/4" Show the bar found with public right surveyed I.S. 8795 unless otherwise noted
 - 1/2" x 1/4" Show the bar and with public right surveyed I.S. 8795
 - 1/4" x 1/2" Show the bar and with public right surveyed I.S. 8795
 - 1/4" x 1/4" Show the bar and with public right surveyed I.S. 8795
- (Utility easements shown per as noted)