

N.W. COR. SEC. 15,  
T. 2 N., R. 38 E.B.M.  
(INST. NO. 500731)

LINCOLN ROAD

S89°52'18"E 283.83'

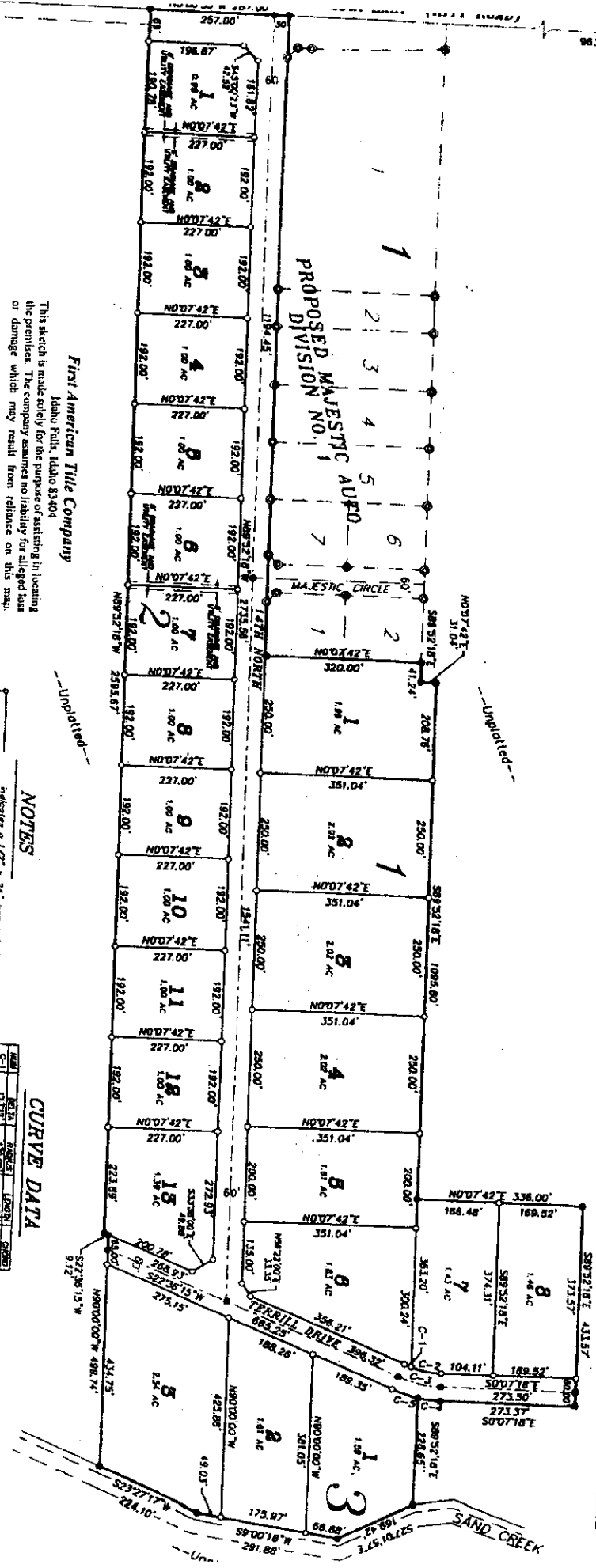
# LINCOLN INDUSTRIAL PARK

## DIVISION NO. 1

### CITY OF AMMON, BONNEVILLE COUNTY, IDAHO

PART OF THE NORTH 1/8  
OF SEC. 18, T. 2 N., R. 38 E.B.M.

NORTH 1/4 COR. SEC. 15,  
T. 2 N., R. 38 E.B.M.  
(INST. NO. 500581)



First American Title Company  
Idaho Falls, Idaho 83404

This sketch is made solely for the purpose of assisting in locating the premises. The company assumes no liability for alleged loss or damage which may result from reliance on this map.



WEST 1/4 COR. SEC. 15,  
T. 2 N., R. 38 E.B.M.  
(INST. NO. 502153)

#### NOTES

- Indicates a 1/2" x 24" iron rod placed with a yellow plastic cap marked L.S. 722
- Indicates a 1/2" x 24" iron rod found with a yellow plastic cap marked L.S. 45813
- Indicates a 3/8" x 30" iron rod placed with a yellow plastic cap marked L.S. 722
- Indicates a 3/8" x 30" iron rod found with a yellow plastic cap marked L.S. 45813
- Utility and drainage easements are 4' thru a 10' wide utility easement is reserved along the street side of all lots.
- Lots shown on this plat are platted in a lighting district and will be assessed for the operation and maintenance costs.
- Indicates lot area in acres.
- 200 AC indicates that main roads will be constructed.
- The County will not maintain roads until constructed.
- Indicates lot area in acres.
- The County will not maintain roads until constructed.

#### CURVE DATA

NO.	BEARING	LENGTH	CHORD	ANGLE
C-1	N107°42'E	175.00'	175.00'	90°00'
C-2	S89°52'18"E	273.50'	273.50'	90°00'
C-3	N107°42'E	175.00'	175.00'	90°00'
C-4	S89°52'18"E	273.50'	273.50'	90°00'
C-5	N107°42'E	175.00'	175.00'	90°00'
C-6	S89°52'18"E	273.50'	273.50'	90°00'

