

AMMON-LINCOLN INDUSTRIAL PARK

DIVISION NO. 2

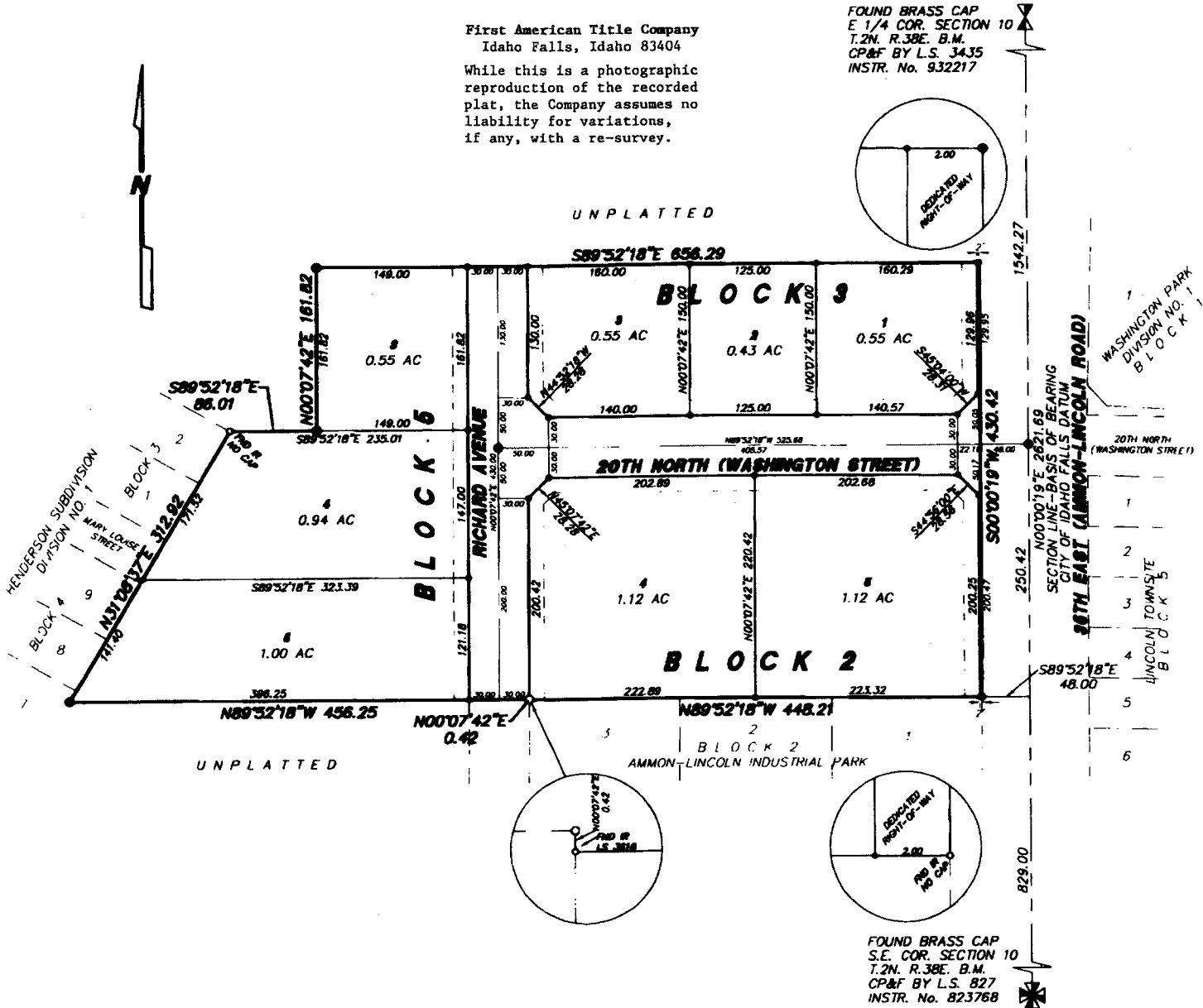
BONNEVILLE COUNTY, IDAHO

BEING PART OF THE S.E. 1/4 OF SECTION 10, T.2N, R.38E. B.M.

First American Title Company
Idaho Falls, Idaho 83404

While this is a photographic reproduction of the recorded plat, the Company assumes no liability for variations, if any, with a re-survey.

FOUND BRASS CAP
E 1/4 COR. SECTION 10
T.2N. R.38E. B.M.
CP&F BY L.S. 3435
INSTR. No. 932217



LEGEND & NOTES

- 5/8" x 30" Steel rebar set with plastic cap stamped L. S.8795
 - 1/2" x 24" Steel rebar set with plastic cap stamped L. S.8795
 - 5/8" Steel rebar found with caps stamped L. S.8795
 - 1/2" Steel rebar found with caps stamped L. S.8795 unless noted otherwise
- A 15 foot wide Utility Easement is hereby granted/reserved along all road frontages within each lot. All other utility easements are 15 feet wide unless noted otherwise.
- This division contains 8 lots. (0.78 acre average lot size.)
- Bonneville County will not maintain roads until improved to County Standards and officially approved and accepted.
- Drainage swales (gutters), private driveways and sidewalk approaches will be constructed and maintained with the correct cross-section as shown on the approved improvement drawings on file in the office of the County Engineer and Mountain River Engineering.
- According to the FEMA Flood Plain FIRM map, Bonneville County Community Panel No. 1600270070D, effective 4/2/02 this subdivision lies in ZONE X area of minimal flooding.
- Lots shown on this plat are included in a lighting district and will be assessed for the operation and maintenance costs.