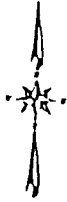


AMMON MEADOWS

DIVISION NO. 1

CITY OF AMMON, BONNEVILLE COUNTY, IDAHO
 PART OF THE EAST 1/2 OF THE N.E. 1/4 OF SEC. 27, T. 2 N., R. 30 E.B.M.

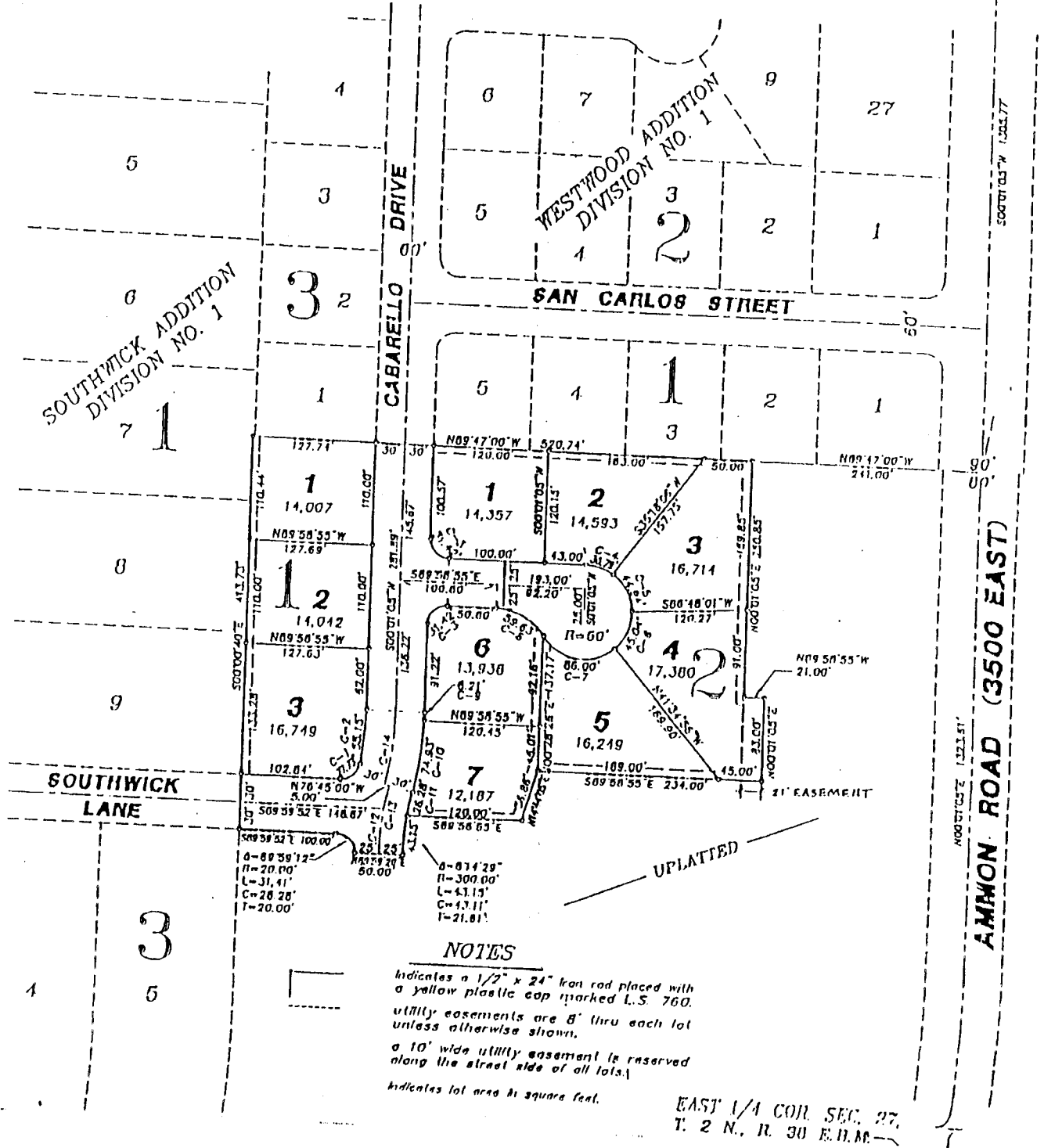


First American Title Company
 Idaho Falls, Idaho 83404

This sketch is made solely for the purpose of assisting in locating the premises. The company assumes no liability for alleged loss or damage which may result from reliance on this map.



N.E. COR. SEC. 27,
 T. 2 N., R. 30 E.B.M.



NOTES

- Indicates a 1/2" x 24" iron rod placed with a yellow plastic cap marked L.S. 760.
- Utility easements are 8' thru each lot unless otherwise shown.
- a 10' wide utility easement is reserved along the street side of all lots.
- Indicates lot area in square feet.

EAST 1/4 COR. SEC. 27,
 T. 2 N., R. 30 E.B.M.