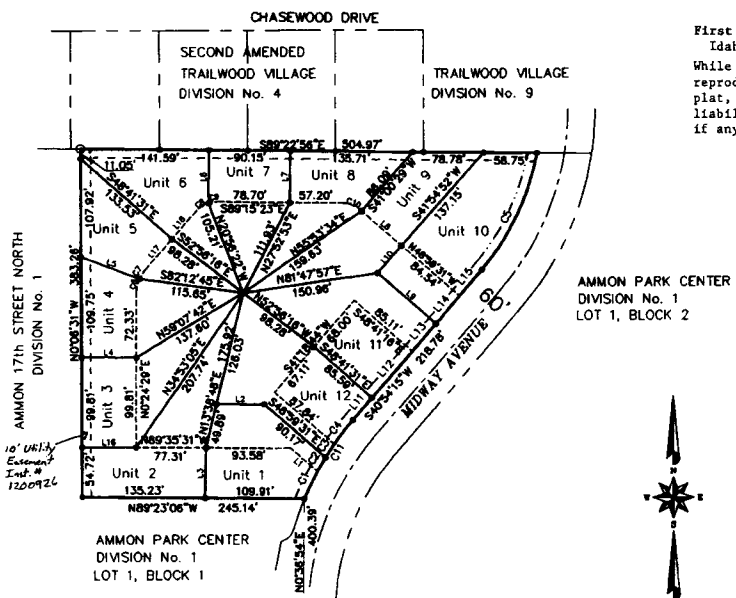


# AMMON OFFICE PARK

PURSUANT TO IDAHO CODE, TITLE 55, CHAPTER 15.

LOCATED IN ALL OF LOT 2, BLOCK 1, AMMON PARK CENTER DIVISION No.1  
CITY OF AMMON, BONNEVILLE COUNTY, IDAHO

PART OF THE SE 1/4 OF SEC. 22, T. 2 N., R. 38 E.B.M.



First American Title Company  
Idaho Falls, Idaho 83404  
While this is a photographic reproduction of the recorded plat, the Company assumes no liability for variations, if any, with a re-survey.

### CURVE TABLE

NUM	DELTA	ARC	RADIUS	CHORD BRC.	CHORD
C1	5°48'21"	33.44'	330.00'	S25°33'51"W	33.42'
C2	3°05'32"	17.81'	330.00'	S30°20'48"W	17.81'
C3	3°03'56"	17.66'	330.00'	S33°25'32"W	17.65'
C4	5°58'45"	34.25'	330.00'	S37°55'52"W	34.23'
C5	30°28'29"	143.61'	270.00'	N25°40'00"E	141.92'
C6	23°30'34"	14.36'	35.00'	S12°09'46"W	14.26'
C7	17°23'26"	10.62'	35.00'	S32°36'46"W	10.56'
C8	30°43'12"	18.77'	35.00'	S56°40'05"W	18.54'
C9	18°42'56"	11.43'	35.00'	S81°23'09"W	11.38'
C10	40°31'22"	24.75'	35.00'	N68°59'45"W	24.24'
C11	17°54'33"	103.15'	330.00'	N31°56'56"E	102.73'

### AREA TABLE

IN SQUARE FEET

UNIT	GROSS AREA	NET AREA
1	10946	6271
2	14103	7479
3	11835	6965
4	11076	5953
5	10006	7187
6	11428	6579
7	9638	5130
8	10223	6452
9	12988	6548
10	15435	12049
11	14481	5804
12	14674	5761

### NOTES

- indicates a 1/2" x 24" iron rod placed with a yellow plastic cap marked L.S. 722.
  - indicates a 1/2" x 24" iron rod found with a yellow plastic cap marked L.S. 722.
  - indicates a 5/8" x 30" iron rod placed with a yellow plastic cap marked L.S. 722.
  - indicates a 5/8" x 30" iron rod found with a yellow plastic cap marked L.S. 722.
  - a 10' wide utility easement is reserved along the street side of all lots.
  - PRIVATE DRIVE AND UTILITY EASEMENT
- BASE OF BEARING SOUTH LINE OF SECTION 22, TOWNSHIP 2 N., RANGE 38 E.B.M., IDAHO FALLS 690 (Pre 2004)

### LINE TABLE

NUM	BEARING	DISTANCE
L1	S48°59'31"E	39.25'
L2	S89°25'31"E	52.38'
L3	N1°21'06"E	55.33'
L4	N89°42'07"W	60.22'
L5	S69°35'31"E	58.23'
L6	N0°24'29"E	56.65'
L7	N0°37'04"E	57.00'
L8	N48°59'31"W	57.83'
L9	S48°59'36"E	64.82'
L10	S41°18'44"W	39.98'
L11	S40°54'15"W	32.48'
L12	S40°54'15"W	68.00'
L13	N40°54'15"E	39.98'
L14	S40°54'15"W	39.98'
L15	N40°54'15"E	38.34'
L16	N89°42'07"W	58.32'
L17	S41°18'29"W	46.13'
L18	S41°18'29"W	38.39'

22  
27

1175.13' 1478.85' 22 23  
27 26

17th STREET  
(BASIS OF BEARING)  
PRE 2004

SE COR. SEC. 22  
FOUND BRASS CAP  
T 2N. R 38E. BM  
CP&F #863407

FOUND BRASS CAP  
T 2N. R 38E. BM  
CP&F #1006768