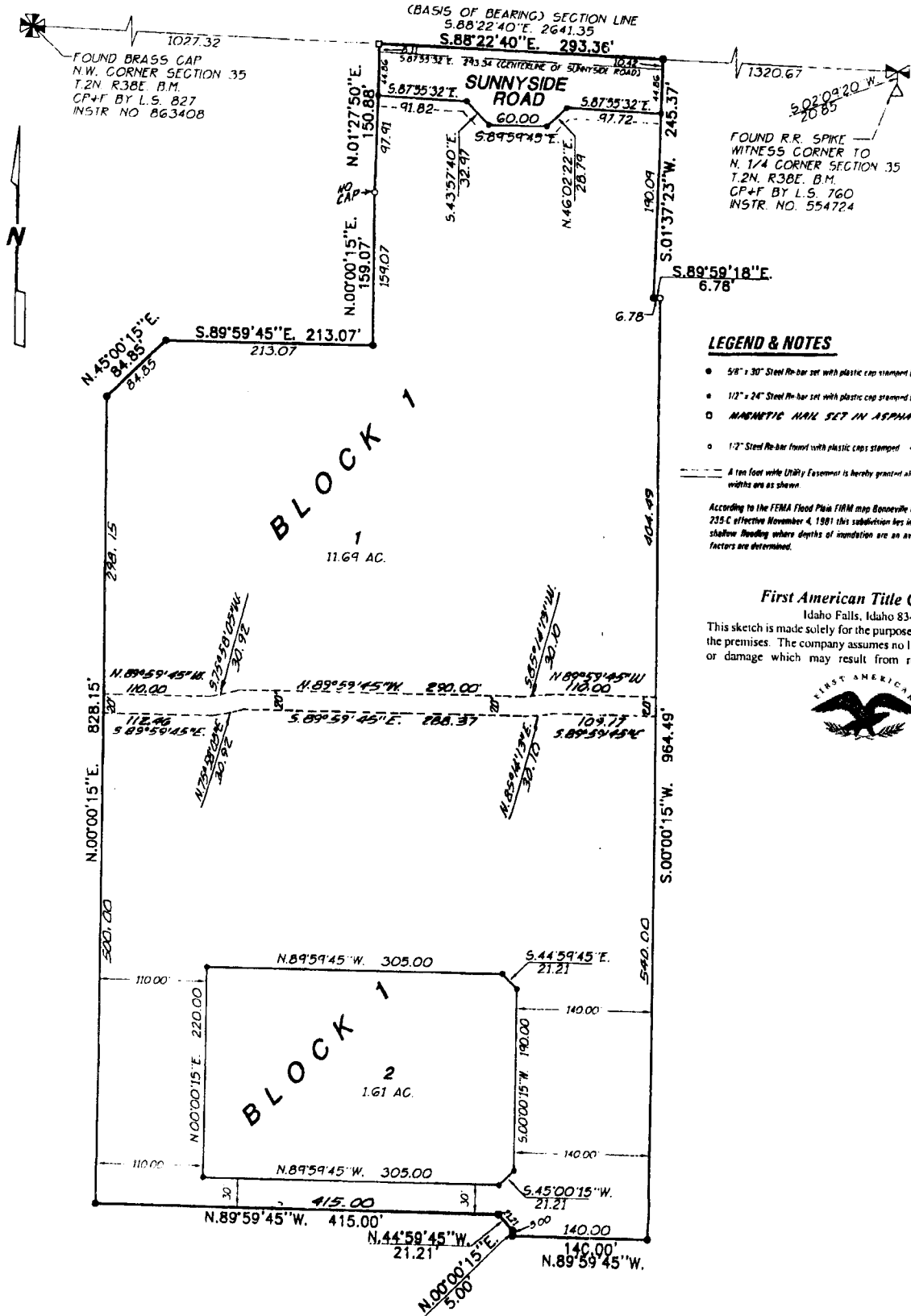


AMMON RANCH

DIVISION NO. 1

AN ADDITION TO THE CITY OF AMMON, BONNEVILLE COUNTY, IDAHO

BEING PART OF THE N.W. 1/4 SECTION 35 T.2N. R.38E. B.M.



LEGEND & NOTES

- 5/8" x 30" Steel Re-bar set with plastic cap stamped L.S. 9795
- 1/2" x 24" Steel Re-bar set with plastic cap stamped L.S. 9795
- ◻ MAGNETIC MARK SET IN ASPHALT
- 1/2" Steel Re-bar found with plastic caps stamped L.S. 827

— A ten foot wide Utility Easement is hereby granted along all road frontages. Other easement widths are as shown.

According to the FEMA Flood Plain FIRM map Bonneville County Community Panel No. 180027-235 C effective November 4, 1991 this subdivision lies in Zone A0 (Depth 2) areas of 100 year shallow flooding where depths of inundation are an average of 2 feet, but no flood hazard factors are determined.

First American Title Company

Idaho Falls, Idaho 83404
This sketch is made solely for the purpose of assisting in locating the premises. The company assumes no liability for alleged loss or damage which may result from reliance on this map

