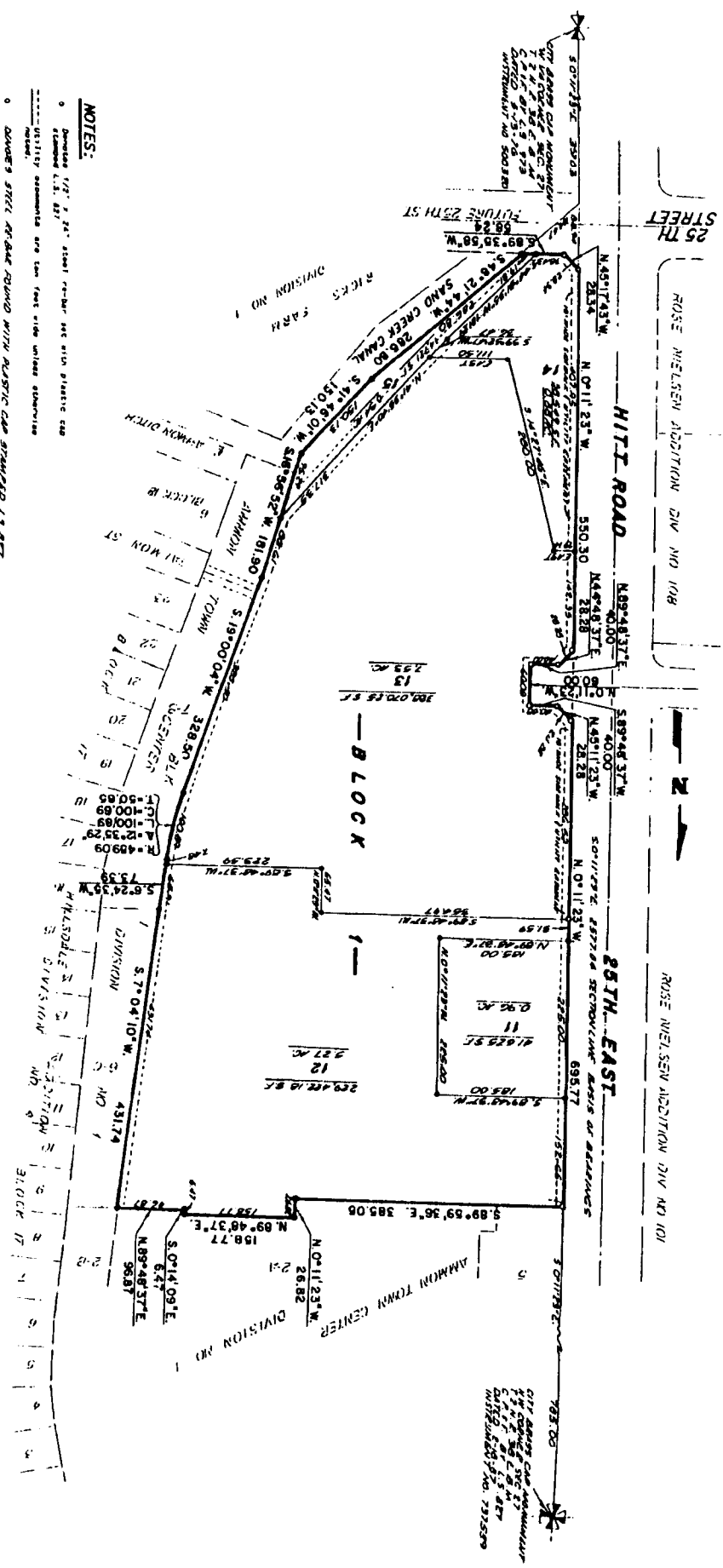


**FIRST AMENDED PLAT OF
 AMMON TOWN CENTER, DIVISION NO. 1**
 CITY OF AMMON, BONNEVILLE COUNTY, IDAHO
 BEING A REPLAT OF LOTS 6-4, 6-8, 7-4, 8, 9 AND 10, BLOCK 1, AMMON TOWN CENTER,
 DIVISION NO. 1, CITY OF AMMON, BONNEVILLE COUNTY, IDAHO



NOTES:

- o Dimensions 1/2", 24" (small) re-Bar set with plastic cap
- o Standard 1/2" dia. bar
- o UTILITY annotations are ten feet wide unless otherwise noted.
- o OWNER'S STEEL REBAR BOUNDARY WITH PLASTIC CAP STANDARD 1/2" DIA.



First American Title Company
 Idaho Falls, Idaho, 83404

This sketch is made solely for the purpose of assisting in locating the premises. The company assumes no liability for alleged loss or damage which may result from reliance on this map.