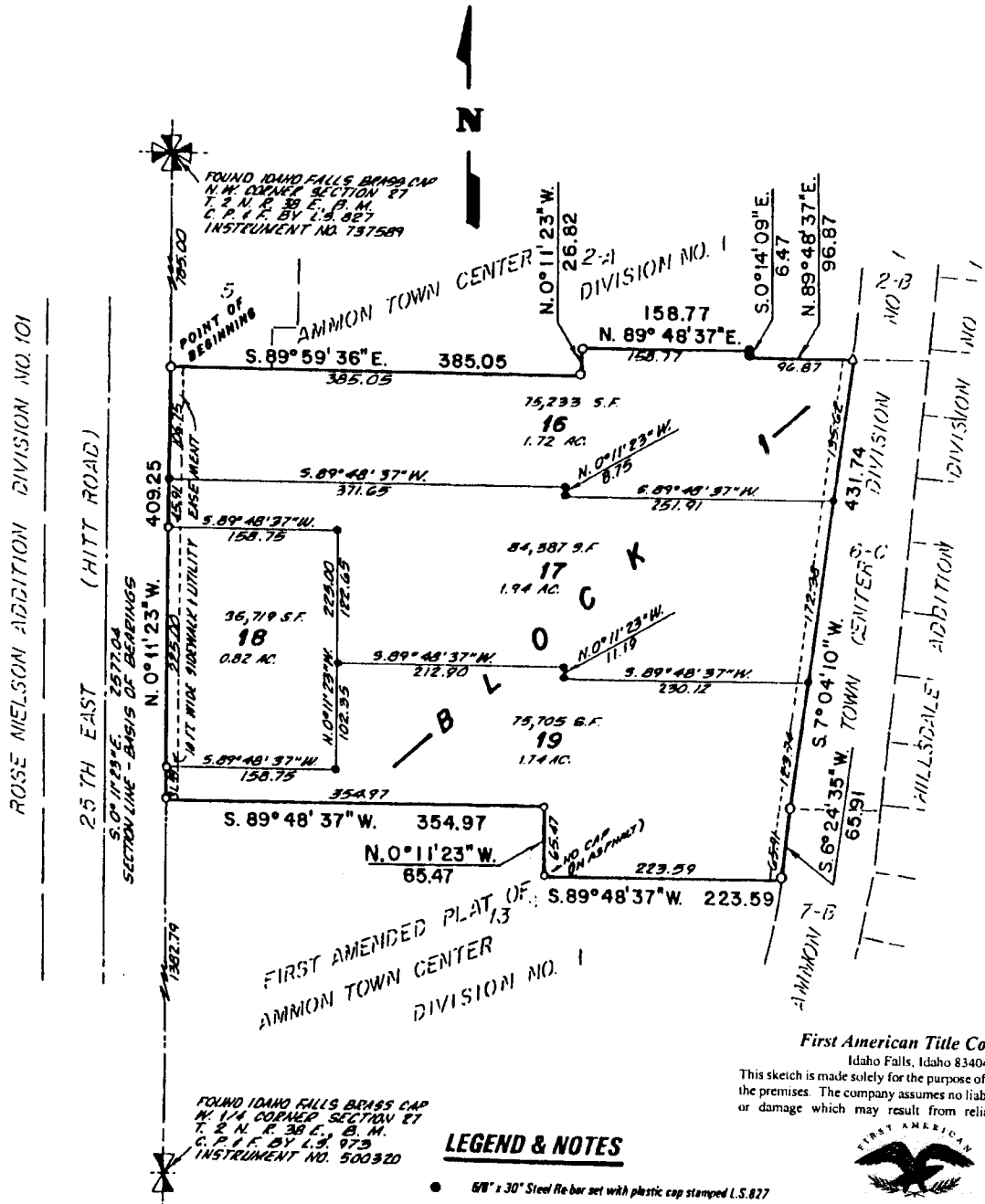


SECOND AMENDED PLAT OF AMMON TOWN CENTER, DIVISION NO. 1

CITY OF AMMON, BONNEVILLE COUNTY, IDAHO
BEING A REPLAT OF LOTS 11 AND 12 BLOCK 1, FIRST AMENDED PLAT OF /
AMMON TOWN CENTER, DIVISION NO. 1, BONNEVILLE COUNTY, IDAHO



ROSE NELSON ADDITION DIVISION NO. 101

25 TH EAST (HITT ROAD)

SECTION LINE - BASIS OF BEARINGS

AMMON TOWN CENTER DIVISION NO. 1

HILLSDALE ADDITION

FOUND IDAHO FALLS BRASS CAP
N. W. CORNER SECTION 27
T. 2 N. R. 30 E., B. M.
C. P. & F. BY L.S. 973
INSTRUMENT NO. 500320

First American Title Company
Idaho Falls, Idaho 83404
This sketch is made solely for the purpose of assisting in locating the premises. The company assumes no liability for alleged loss or damage which may result from reliance on this map.

LEGEND & NOTES

- 6/8" x 30" Steel Re-bar set with plastic cap stamped L.S.827
- 1/2" x 24" Steel Re-bar set with plastic cap stamped L.S.827
- 6/8" Steel Re-bar found with plastic cap stamped L.S.827
- 1/2" Steel Re-bar found with plastic cap stamped L.S.827
- △ P.K. not found



--- All Utility Easements are Ten feet wide unless otherwise noted.

Access onto 25th East (Hitt Road) from these lots are limited to existing approaches as platted on Ammon Town Center, Division No. 1.

Cross access easements (not shown) provided for ingress and egress across these lots as well as across the adjoining lots.