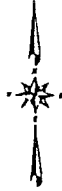


AMMON-LINCOLN INDUSTRIAL PARK

BONNEVILLE COUNTY, IDAHO

PART OF THE S.E. 1/4 OF THE S.E. 1/4 OF SECTION 10, T. 2 N., R. 38 E.B.M.



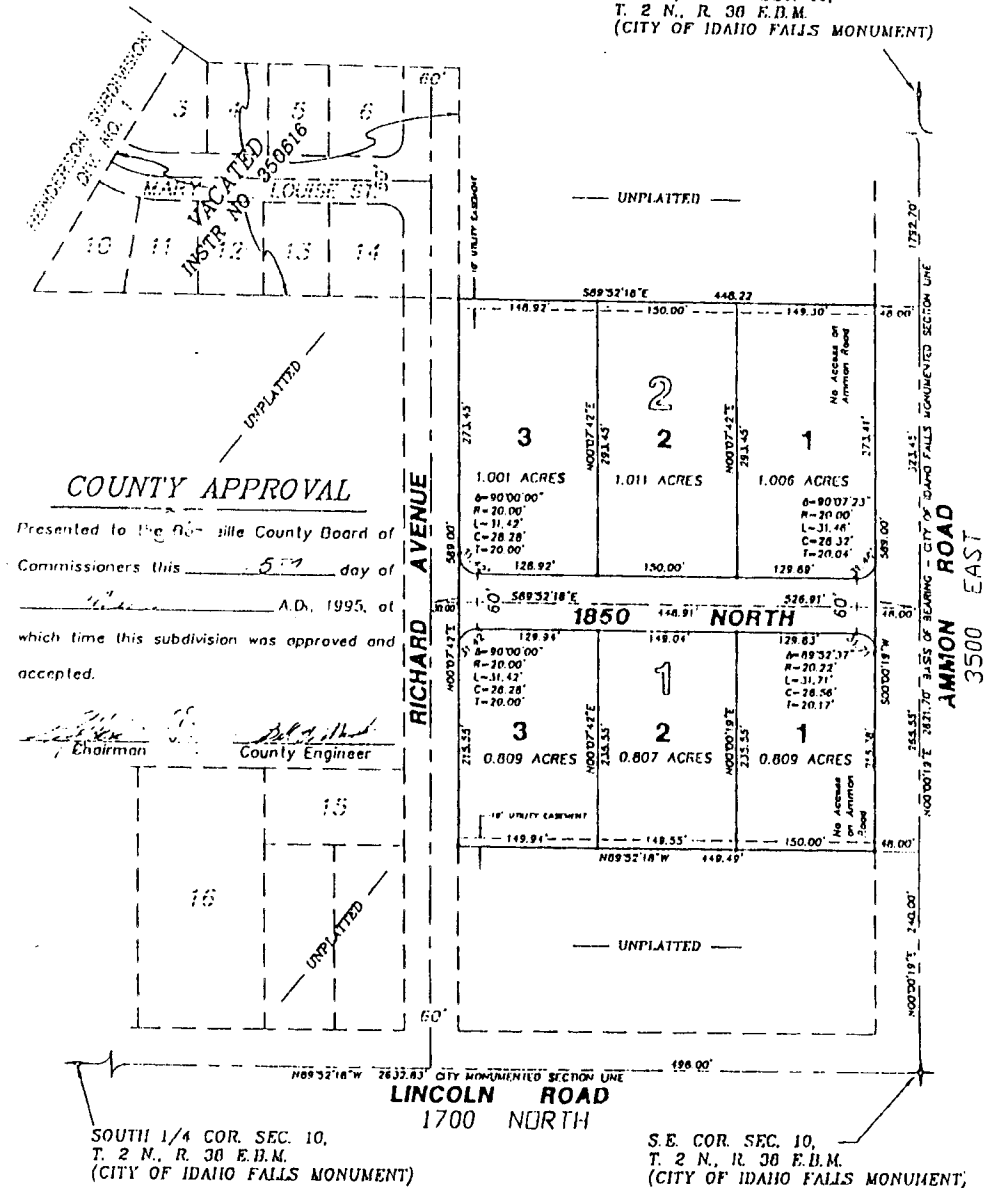
First American Title Company

Idaho Falls, Idaho 83404

This sketch is made solely for the purpose of assisting in locating the premises. The company assumes no liability for alleged loss or damage which may result from reliance on this map.



EAST 1/4 COR. SEC. 10,
T. 2 N., R. 38 E.B.M.
(CITY OF IDAHO FALLS MONUMENT)



NOTES

indicates a 1/2" x 24" iron rod placed with a yellow plastic cap marked L.S. 7380.

a 10' wide utility easement is reserved along the street side of all lots.

Indicates lot area in acres.

The County will not maintain roads until constructed to County standards and Officially accepted.

Private driveway approaches will be constructed and drainage swales maintained as shown on the approved improvement drawings on file in the office of the County Engineer.