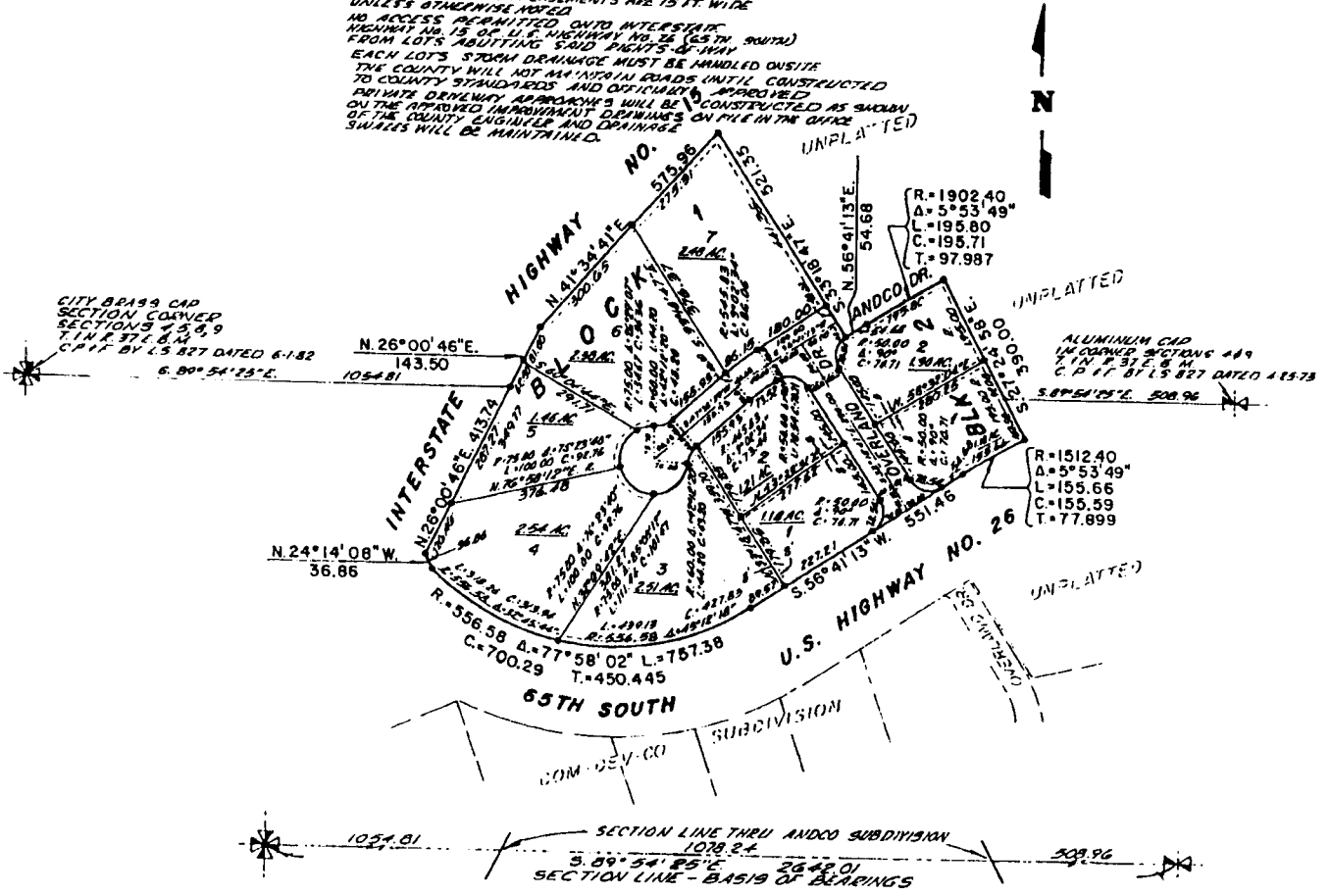


ANDCO SUBDIVISION DIVISION NO. 1 BONNEVILLE COUNTY, IDAHO

PART OF THE S.W. 1/4 OF SEC. 4, AND OF THE N.W. 1/4 OF SEC. 9, T.1 N., R.37 E., B.M.

NOTES

- DENOTES 1/2" x 24" STEEL BEAM WITH PLASTIC CAP STAMPED L.S. 827
- REGULATION 1 UTILITY EASEMENTS ARE 15 FT. WIDE UNLESS OTHERWISE NOTED
- NO ACCESS PERMITTED OVER INTERSTATE HIGHWAY NO. 15 OR U.S. HIGHWAY NO. 26 (SOUTH) FROM LOTS ABUTTING SAID RIGHTS-OF-WAY
- EACH LOT'S STORM DRAINAGE MUST BE HANDLED ON-SITE
- THE COUNTY WILL NOT MAINTAIN ROADS UNTIL CONSTRUCTED TO COUNTY STANDARDS AND OFFICIALLY APPROVED
- PRIVATE DRIVEWAY APPROACHES WILL BE CONSTRUCTED AS SHOWN ON THE APPROVED IMPROVEMENT DRAWINGS ON FILE IN THE OFFICE OF THE COUNTY ENGINEER AND DRAINAGE SWALES WILL BE MAINTAINED.



First American Title Company
Idaho Falls, Idaho 83404

This sketch is made solely for the purpose of assisting in locating the premises. The company assumes no liability for alleged loss or damage which may result from reliance on this map.

