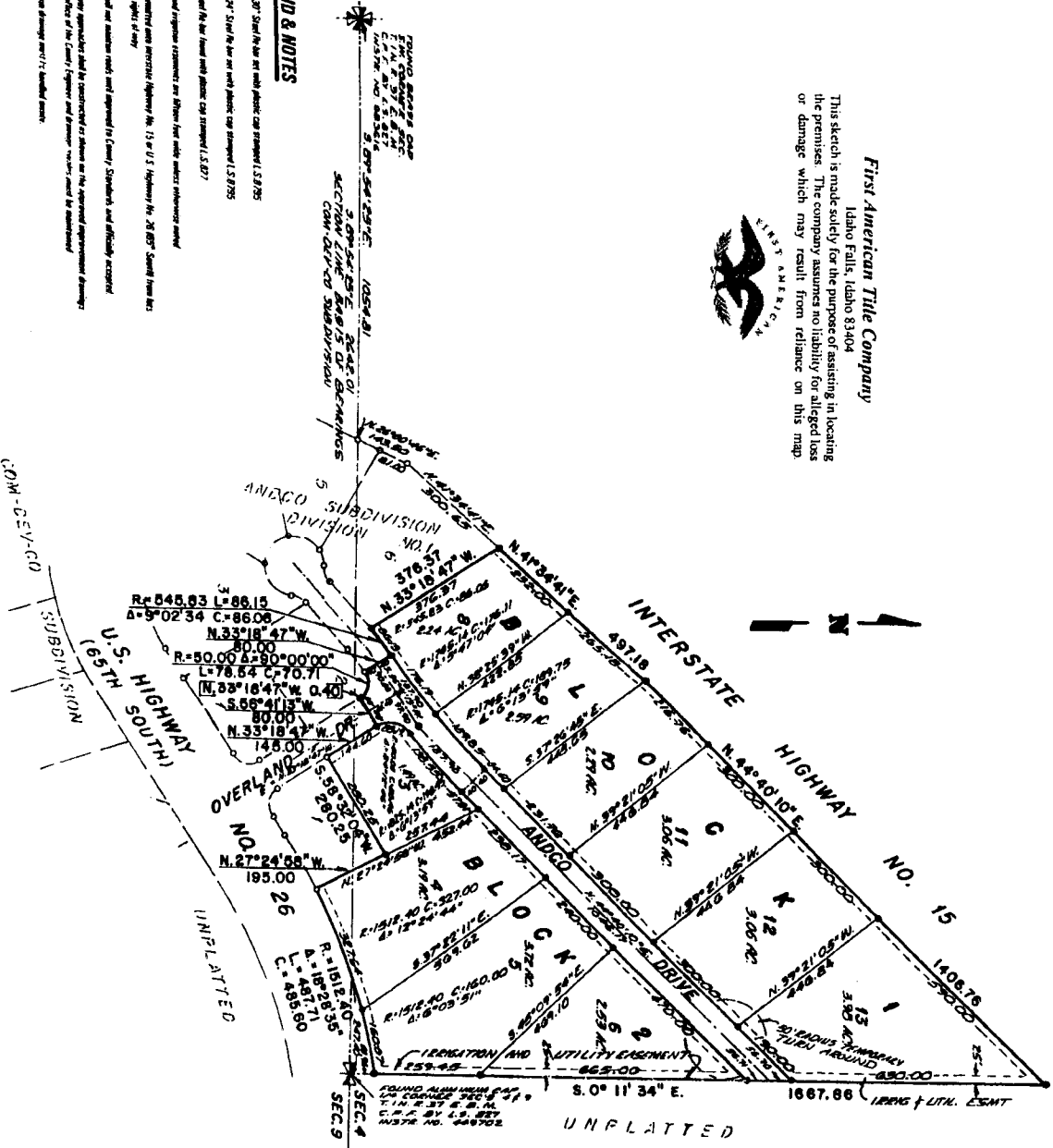


**ANDCO SUBDIVISION**  
**DIVISION NO. 2**  
**BONNEVILLE COUNTY, IDAHO**  
**BEING PART OF THE S.W. 1/4 OF SEC. 4 AND OF THE NW. 1/4 OF SEC. 9, T.1N., R.37E., B.M.**  
**INCLUDING A REPLAT OF LOT 7, BLOCK 1, LOT 2, BLOCK 2, DIVISION NO. 1 AND**  
**THE INTERSECTION OF OVERLAND DRIVE AND ANDCO DRIVE**

**First American Title Company**

Idaho Falls, Idaho 83404

This sketch is made solely for the purpose of assisting in locating the premises. The company assumes no liability for alleged loss or damage which may result from reliance on this map.



**LEGEND & NOTES**

- 3/4" 1.37" Steel Reinforcing Bar per inch diameter cap strength 1.8/795
- 1/2" 1.24" Steel Reinforcing Bar per inch diameter cap strength 1.8/795
- 1/2" Steel Reinforcing Bar per inch diameter cap strength 1.8/795

(They and Engineer statements are shown here under address references only)  
 The access property was previously Highway No. 15 or U.S. Highway No. 26. 3/4" 1.37" Steel Reinforcing Bar per inch diameter cap strength 1.8/795

The County and all other records were approved by County, Statewide and officially accepted.  
 Please always approach this sketch as shown on the approved engineering drawings on file in the office of the County Engineer and Engineer. Notices must be submitted.  
 Each lot's street drainage per 174 Standard Plans.