

# ARNOLD WADSWORTH ADDITION

## DIVISION NO. 2

TO THE CITY OF AMMON, BONNEVILLE COUNTY, IDAHO

DAVID E BENTON & ASSOCIATES  
CONSULTING ENGINEERS  
IDAHO FALLS, IDAHO



First American Title Company

Idaho Falls, Idaho 83404

This sketch is made solely for the purpose of assisting in locating the premises. The company assumes no liability for alleged loss or damage which may result from reliance on this map.

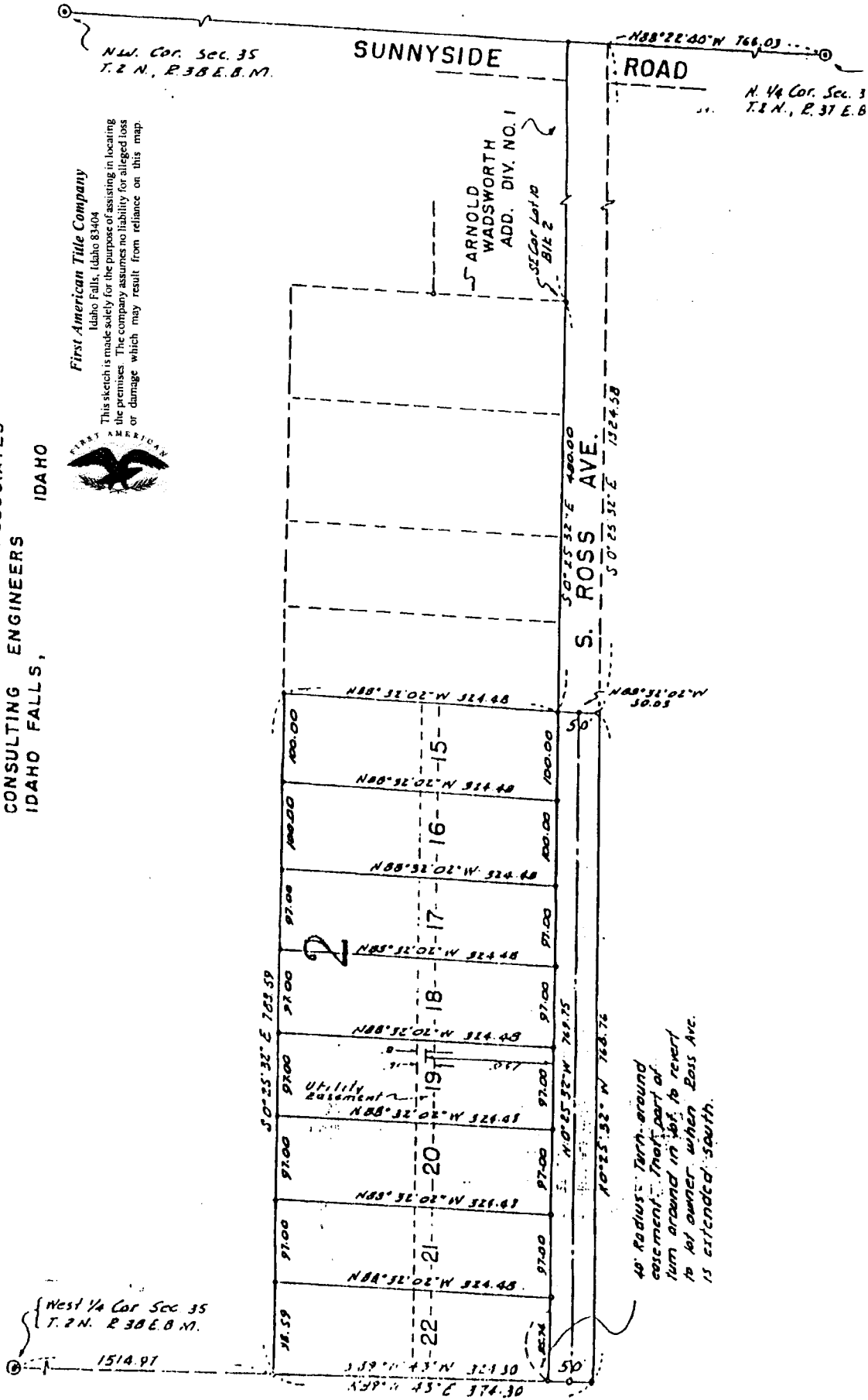
West 1/4 Cor. Sec. 35  
T. 2 N., R. 38 E. B. M.

N.W. Cor. Sec. 35  
T. 2 N., R. 38 E. B. M.

SUNNYSIDE

ROAD

N. 1/4 Cor. Sec. 3  
T. 2 N., R. 37 E. B



40' Radius Turn-around easement. That part of turn-around is to revert to lot owner when Ross Ave. is extended south.

ARNOLD WADSWORTH  
ADD. DIV. NO. 1  
SEC. Cor. Lot 10  
Blk 2

2

Utility easement

1514.97

30° 25' 32" E 763.59

S. ROSS AVE.  
50° 25' 32" E 440.00  
50° 25' 32" E 764.58

10° 25' 32" N 768.76

50° 25' 32" E 440.00

89° 45' N 20° 25' 32" W 100.00

89° 45' N 20° 25' 32" W 100.00

89° 45' N 20° 25' 32" W 100.00

89° 45' N 20° 25' 32" W 100.00

89° 45' N 20° 25' 32" W 100.00

89° 45' N 20° 25' 32" W 100.00

89° 45' N 20° 25' 32" W 100.00

89° 45' N 20° 25' 32" W 100.00

89° 45' N 20° 25' 32" W 100.00

89° 45' N 20° 25' 32" W 100.00

89° 45' N 20° 25' 32" W 100.00

89° 45' N 20° 25' 32" W 100.00

89° 45' N 20° 25' 32" W 100.00

89° 45' N 20° 25' 32" W 100.00

89° 45' N 20° 25' 32" W 100.00

89° 45' N 20° 25' 32" W 100.00

89° 45' N 20° 25' 32" W 100.00

89° 45' N 20° 25' 32" W 100.00

89° 45' N 20° 25' 32" W 100.00