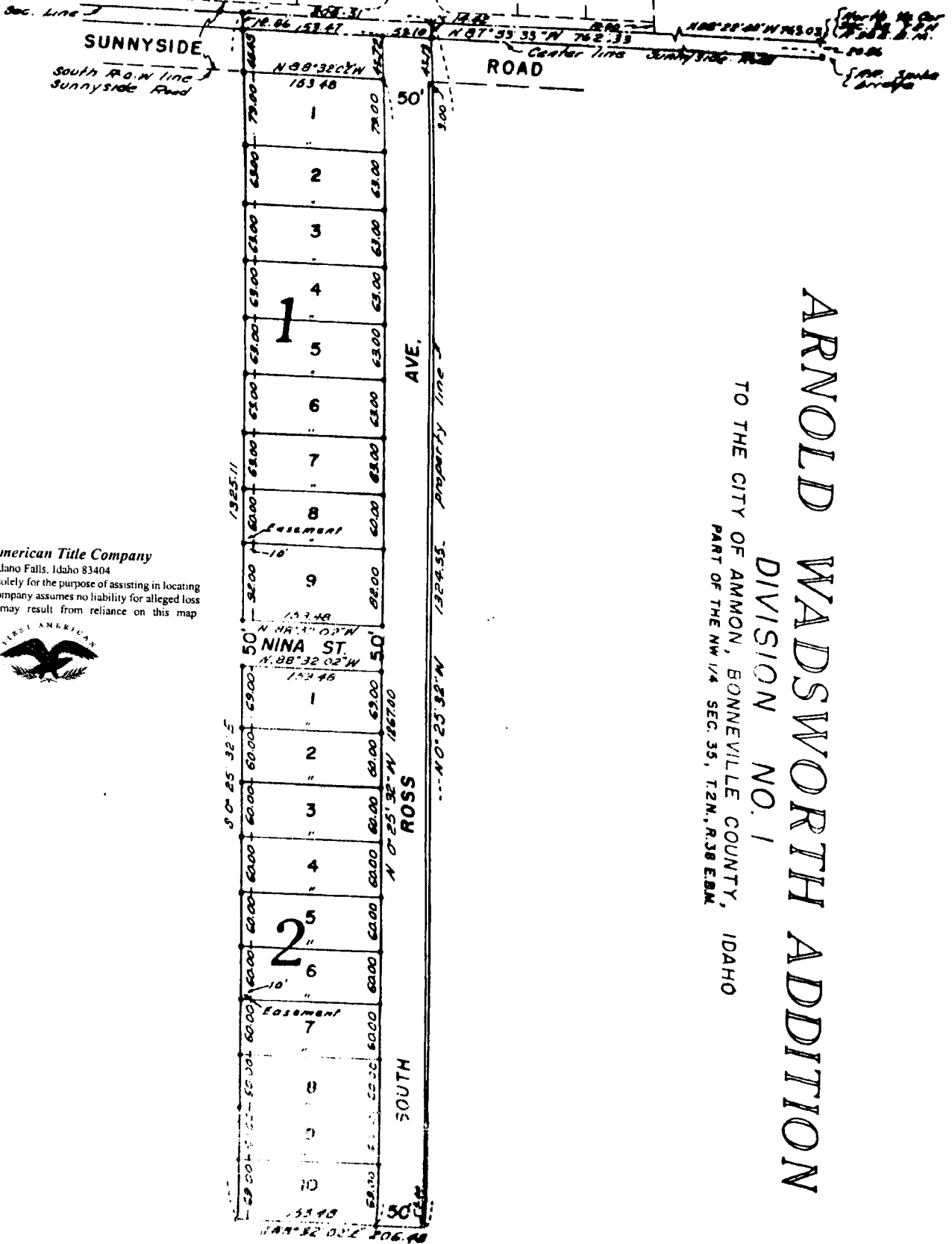


PETERSON PARK SUBDIVISION

ROSS AVE.



ARNOLD WADSWORTH ADDITION

DIVISION NO. 1

TO THE CITY OF AMMON, BONNEVILLE COUNTY, IDAHO
 PART OF THE NW 1/4 SEC. 35, T2N, R38E, B1M

First American Title Company

Idaho Falls, Idaho 83404

This sketch is made solely for the purpose of assisting in locating the premises. The company assumes no liability for alleged loss or damage which may result from reliance on this map.

