

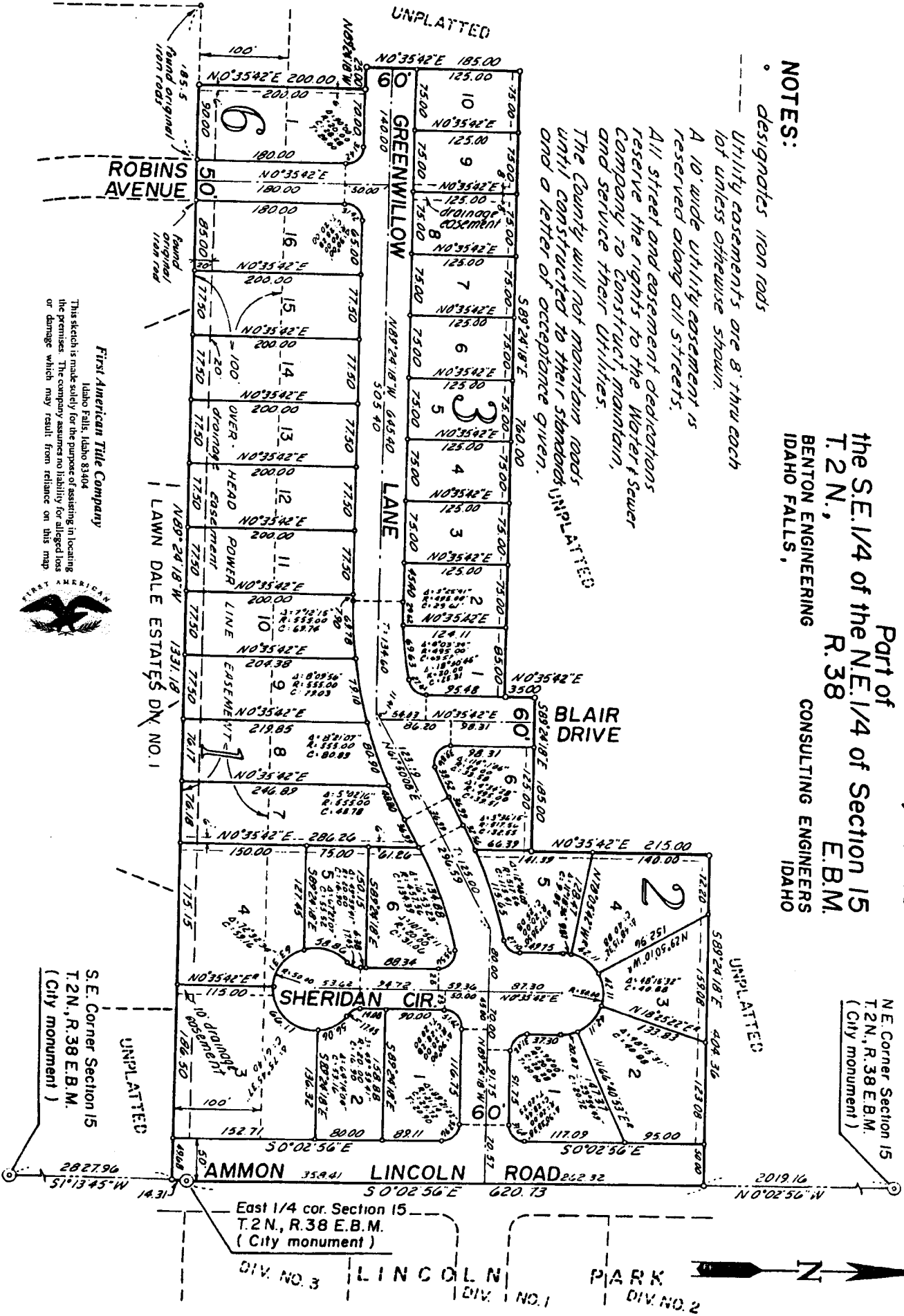
ARNOLD'S MOBILE HOME PARK

DIVISION NO. 1
 BONNEVILLE COUNTY, IDAHO

Part of
 the S.E. 1/4 of the N.E. 1/4 of Section 15
 T. 2 N., R. 38 E.B.M.
 BENTON ENGINEERING
 IDAHO FALLS,
 CONSULTING ENGINEERS
 IDAHO

NOTES:

- designates iron rods
- Utility easements are 8' thru each lot unless otherwise shown.
- A 10' wide utility easement is reserved along all streets.
- All street and easement dedications reserve the rights to the Water & Sewer Company to construct, maintain, and service their utilities.
- The County will not maintain roads until constructed to their standards UNPLATTED and a letter of acceptance given.



First American Title Company
 Idaho Falls, Idaho 83404
 This sketch is made solely for the purpose of assisting in locating the premises. The company assumes no liability for alleged loss or damage which may result from reliance on this map.



N.E. Corner Section 15
 T. 2 N., R. 38 E.B.M.
 (City monument)

S.E. Corner Section 15
 T. 2 N., R. 38 E.B.M.
 (City monument)

East 1/4 cor. Section 15
 T. 2 N., R. 38 E.B.M.
 (City monument)

