

ASHFORD COMMERCIAL PLAZA

PURSUANT TO DAHO CODE, TITLE 66, CHAPTER 66
CITY OF IDAHO FALLS, BONNEVILLE COUNTY, IDAHO

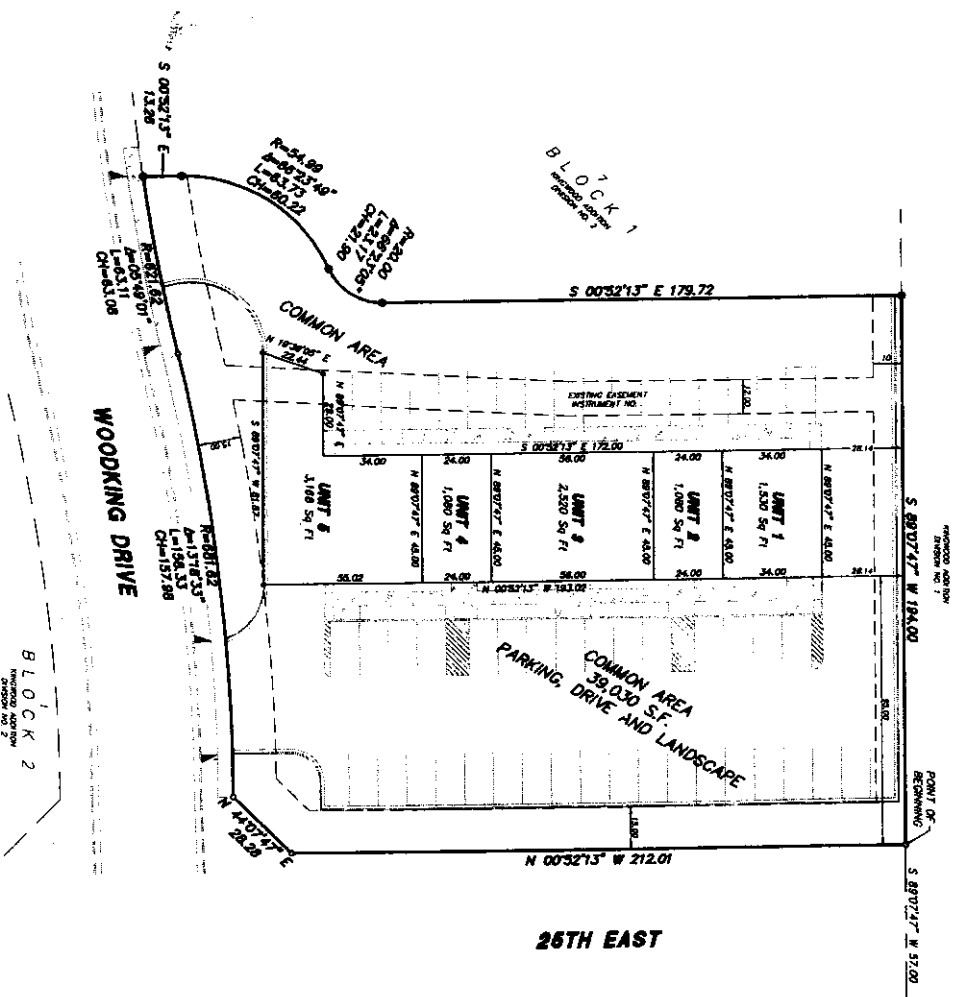
LEGEND & NOTES

- 5/8" x 3/8" Steel nail set with plastic cap stamped L.S. 8785
- 1/2" x 3/8" Steel nail set with plastic cap stamped L.S. 8785
- 1/2" Steel nail set with plastic cap stamped 10786

Plate utility easements as per Recorded plat of Kingwood Addition, Division No. 2
This plate consists of 5 units.

Each unit consists of the entire property enclosed by the Unit Boundary lines including the land and all improvements thereon, but subject to the covenants, conditions, and restrictions, and easements set forth in the Declaration of Covenants, Conditions and Restrictions of Ashford Commercial Plaza.
For Order 7 (Health Department approval) see Kingwood Addition, Division No. 2 plat recorded November 8, 2006 under instrument No. 120123.

First American Title Company
Idaho Falls, ID 83404
While this is a photographic reproduction of the recorded plat, the company assumes no liability for variations, if any, with a re-survey.



26TH EAST

N 00°52'13" W 2708.88
SECTION LINE (BASIS OF BEARING)
CITY OF IDAHO FALLS DATUM-2004
AS PER KINGWOOD ADDITION, DIVISION NO. 2

BRASS CAP SECTION 33
L.S. 8785
C.P. 87 BY 15 8723
MSTR. NO. 189823

ALUMINUM CAP
N.E. COR. SECTION 33
L.S. 8785
C.P. 87 BY 15 8723
MSTR. NO. 1215837