

**THE SECOND AMENDED PLAT OF
ASHMENT ADDITION
DIVISION NO. 4
CITY OF IDAHO FALLS, BONNEVILLE COUNTY, IDAHO
BEING A REPLAT OF LOTS 5 & 6, BLOCK 2,
OF THE FIRST AMENDED PLAT.
PART OF THE S.E. 1/4 OF SECTION 21, T. 2 N., R. 38 E.B.M.**

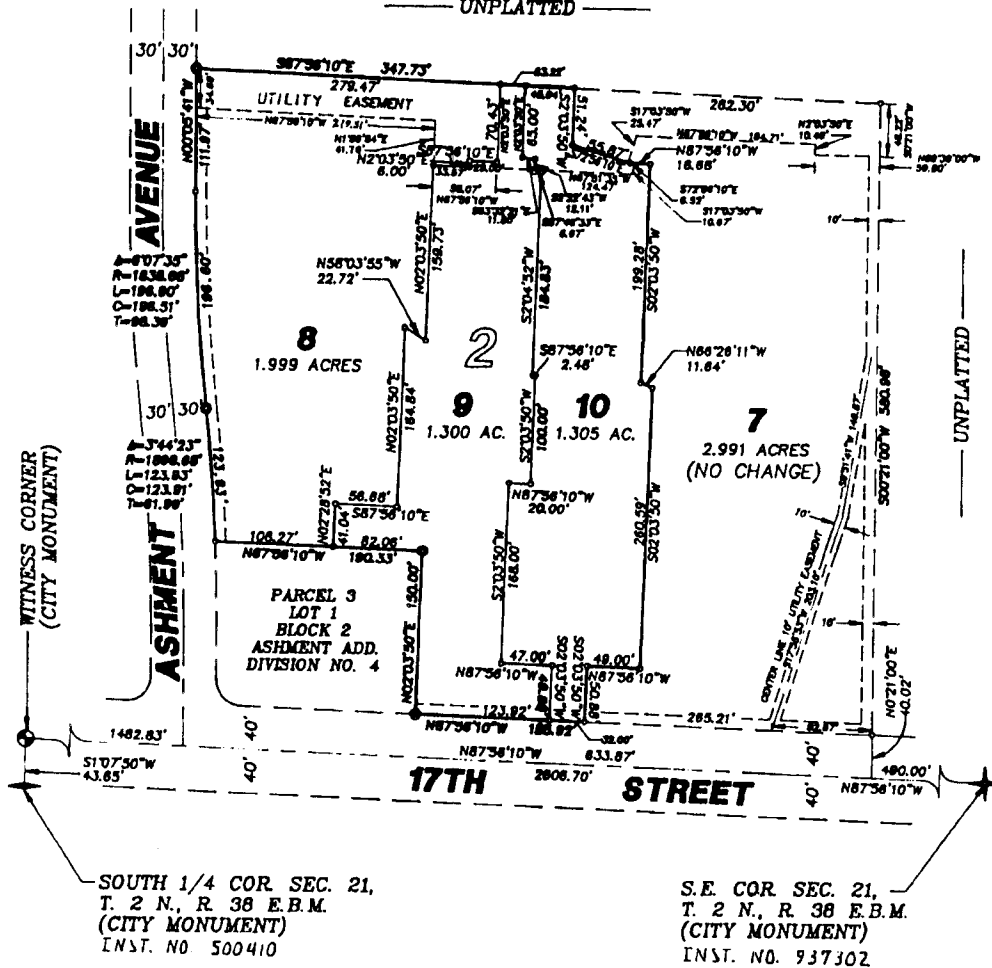
First American Title Company

Idaho Falls, Idaho 83404

This sketch is made solely for the purpose of assisting in locating the premises. The company assumes no liability for alleged loss or damage which may result from reliance on this map.



UNPLATTED



NOTES



Indicates a 1/2" x 24" iron rod placed with a yellow plastic cap marked L.S. 722.



Indicates a 1/2" x 24" iron rod found with a yellow plastic cap marked L.S. 722.



utility easements are 10' through each lot unless otherwise shown.

a 10' wide utility easement is reserved along the street side of all lots.