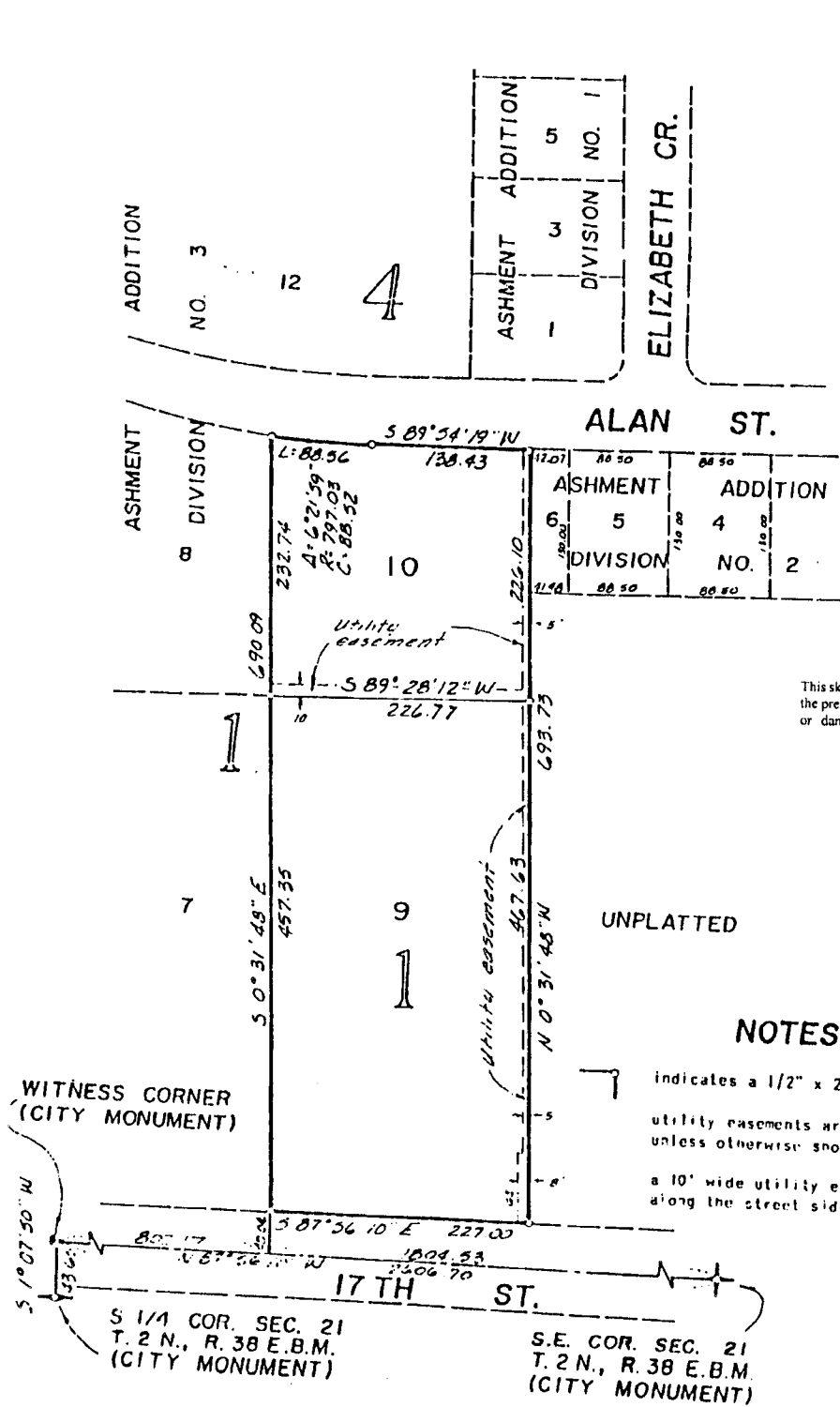


ASHMENT ADDITION

DIVISION NO. 5 AND THE FIRST AMENDED
 PLAT OF A PORTION OF LOT 6, BLOCK 1, OF ASHMENT ADD.
 DIV. NO. 2, TO THE CITY OF IDAHO FALLS, IDAHO
 PART OF THE S.E. 1/4 OF SEC. 21, T. 2 N., R. 38 E.B.M.



First American Title Company

Idaho Falls, Idaho 83404
 This sketch is made solely for the purpose of assisting in locating the premises. The company assumes no liability for alleged loss or damage which may result from reliance on this map.



NOTES

- indicates a 1/2" x 24" iron rod
- utility easements are 8' thru each lot unless otherwise shown.
- a 10' wide utility easement is reserved along the street side of all lots.