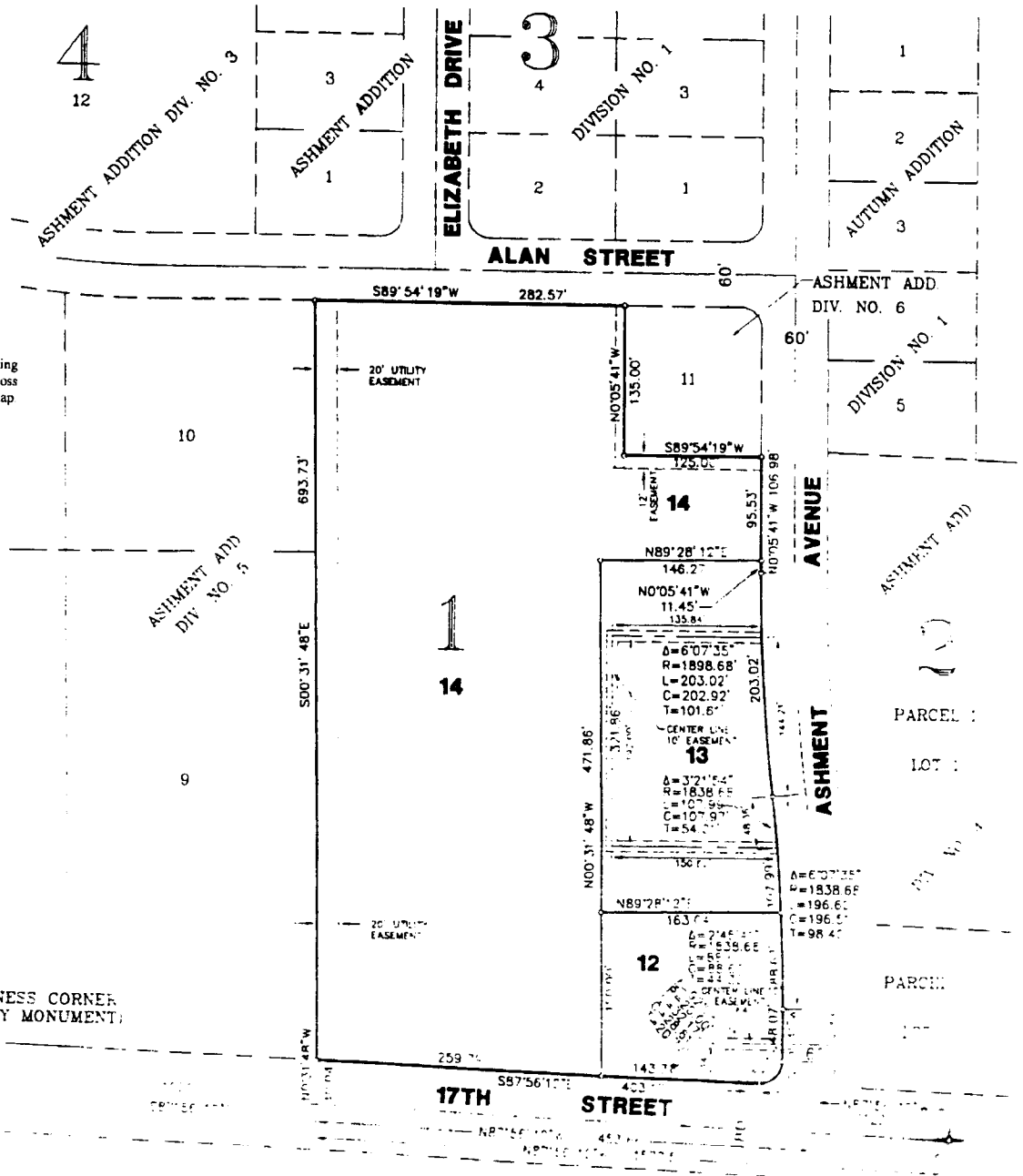


ASHMENT ADDITION DIVISION NO. 7

TO THE CITY OF IDAHO FALLS, IDAHO
AND THE FIRST AMENDED PLAT OF LOTS 4 AND 5
AND THE REMAINING PORTION OF LOTS 3 AND 6,
BLOCK 1, OF ASHMENT ADDITION, DIVISION NO. 2
TO THE CITY OF IDAHO FALLS, IDAHO.

PART OF THE S.E. 1/4 OF SEC. 21, T. 2 N., R. 38 E.B.M.



First American Title Company
Idaho Falls, Idaho 83404

This sketch is made solely for the purpose of assisting in locating the premises. The company assumes no liability for alleged loss or damage which may result from reliance on this map.



WITNESS CORNER
(CITY MONUMENT)