

ASHMENT ADDITION

DIVISION NO. 2

TO THE CITY OF IDAHO FALLS, IDAHO

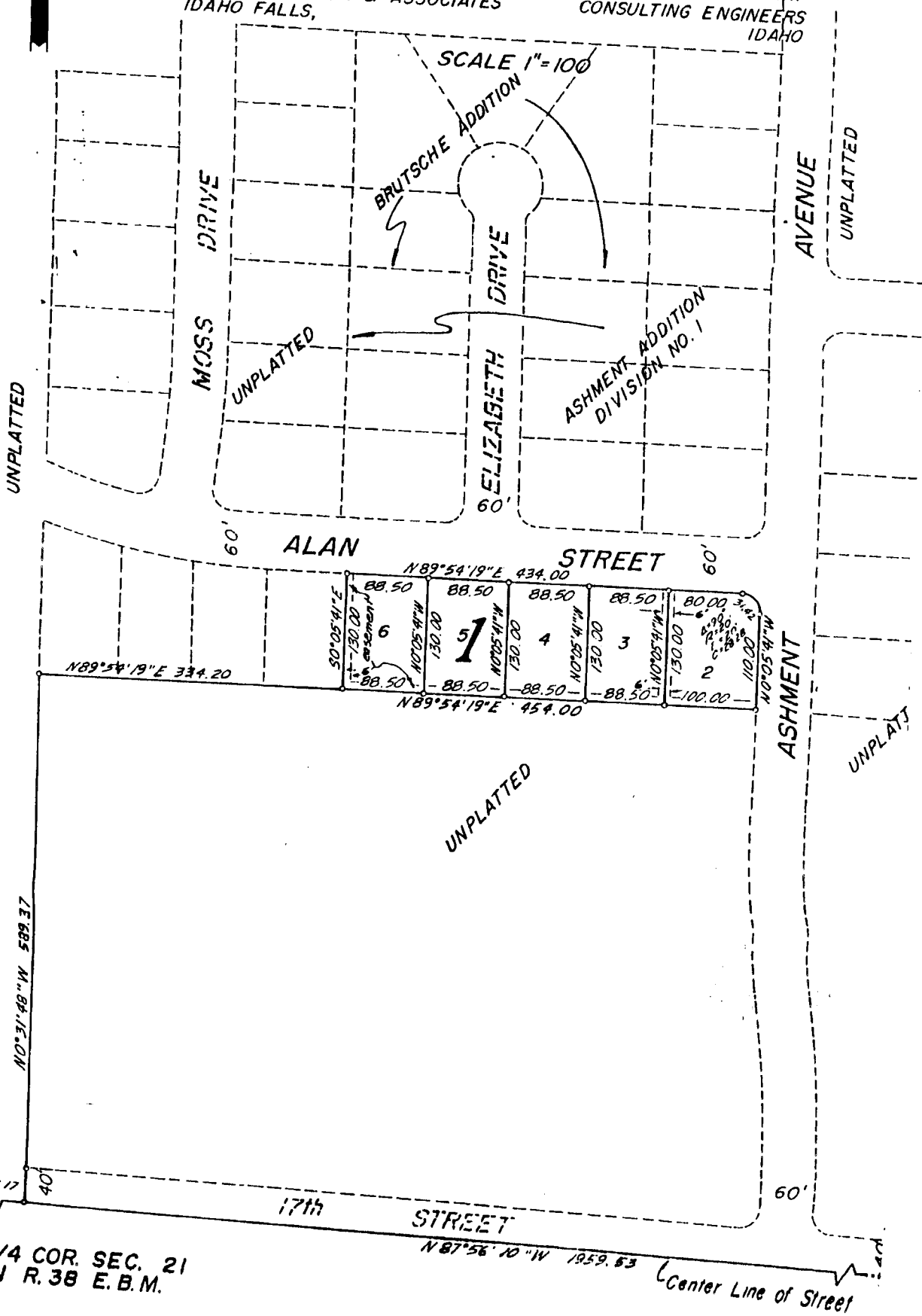
PART OF THE SW 1/4 OF SEC. 22 T.2N., R. 38 E.B.M.

DAVID E. BENTON & ASSOCIATES

CONSULTING ENGINEERS
IDAHO

First American Title Company

Idaho Falls, Idaho 83404
This sketch is made solely for the purpose of assisting in locating the premises. The company assumes no liability for alleged loss or damage which may result from reliance on this map.



UNPLATTED

UNPLATTED

UNPLATTED

UNPLATTED

UNPLATTED

CITY MONUMENT
(WITNESS CORNER)

S 1/4 COR. SEC. 21
T.2N R. 38 E.B.M.

Center Line of Street

SCALE 1"=100

BRUTSCHE ADDITION

MOSS DRIVE

ELIZABETH DRIVE

ASHMENT ADDITION
DIVISION NO. 1

ALAN STREET

ALAN STREET

ASHMENT AVENUE

17th STREET