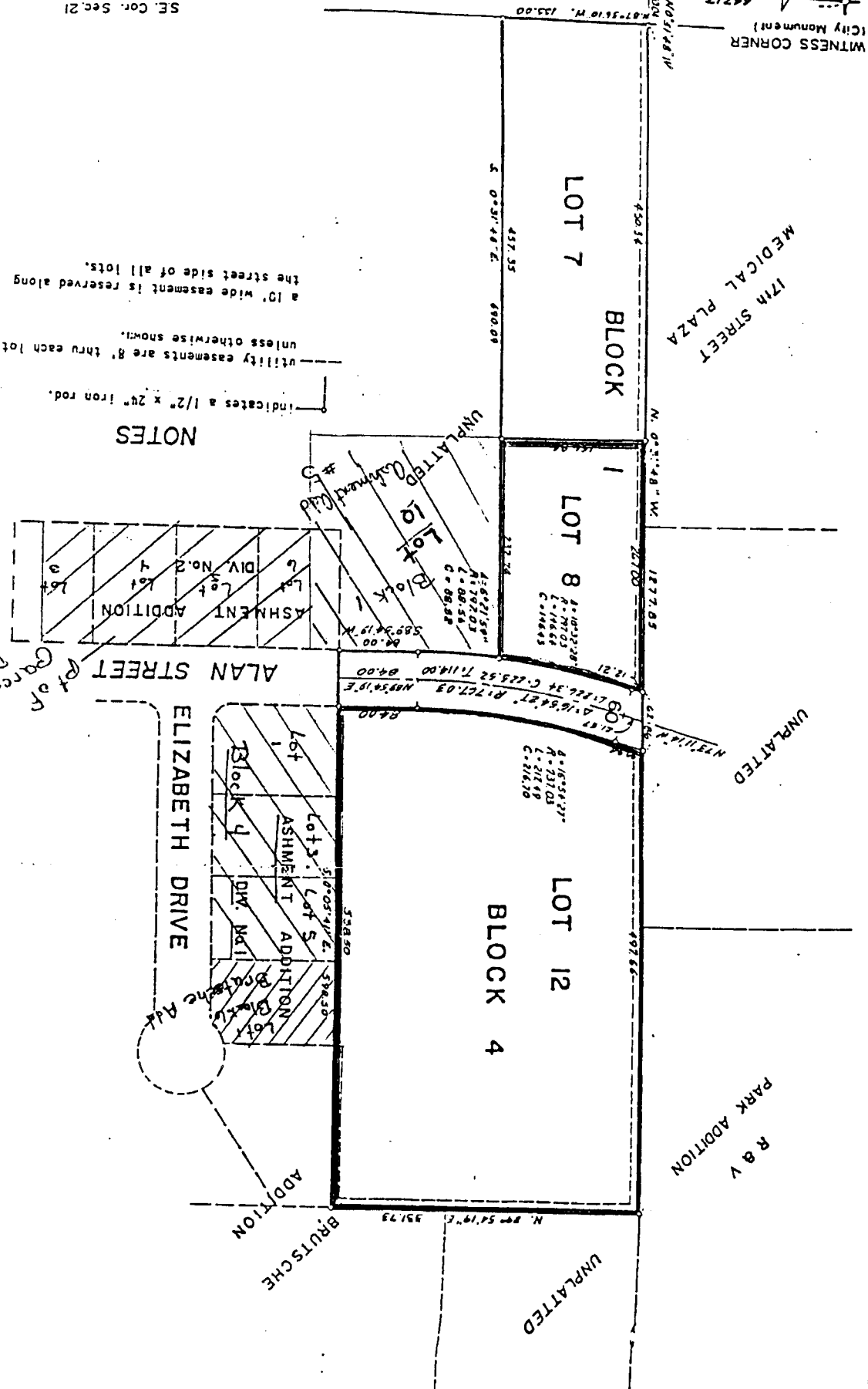


S 1/4 Cor. Sec. 21
T 2 N., R 38 E. B.M.
(City Monument)

17th STREET
SE. Cor. Sec. 21
T2N., R38E B.M.
(City Monument)



NOTES

Indicates a 1/2" x 24" iron rod.

Utility easements are 8' thru each lot unless otherwise shown.

A 10' wide easement is reserved along the street side of all lots.

ASHMENT ADDITION

DIVISION No. 3

TO THE CITY OF IDAHO FALLS, IDAHO

PART OF THE S.E. 1/4 OF SEC. 21 T. 2 N., R. 38 E. B.M.
DAVID E. BENTON & ASSOCIATES CONSULTING ENGINEERS
IDAHO FALLS
IDAHO



First American Title Company
Idaho Falls, Idaho 83404

This sketch is made solely for the purpose of assisting in locating the premises. The company assumes no liability for alleged loss or damage which may result from reliance on this map.