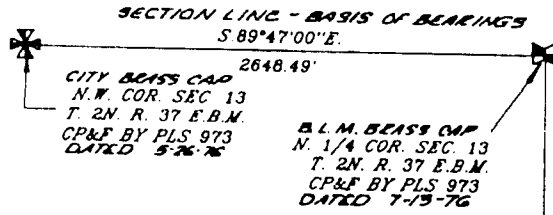


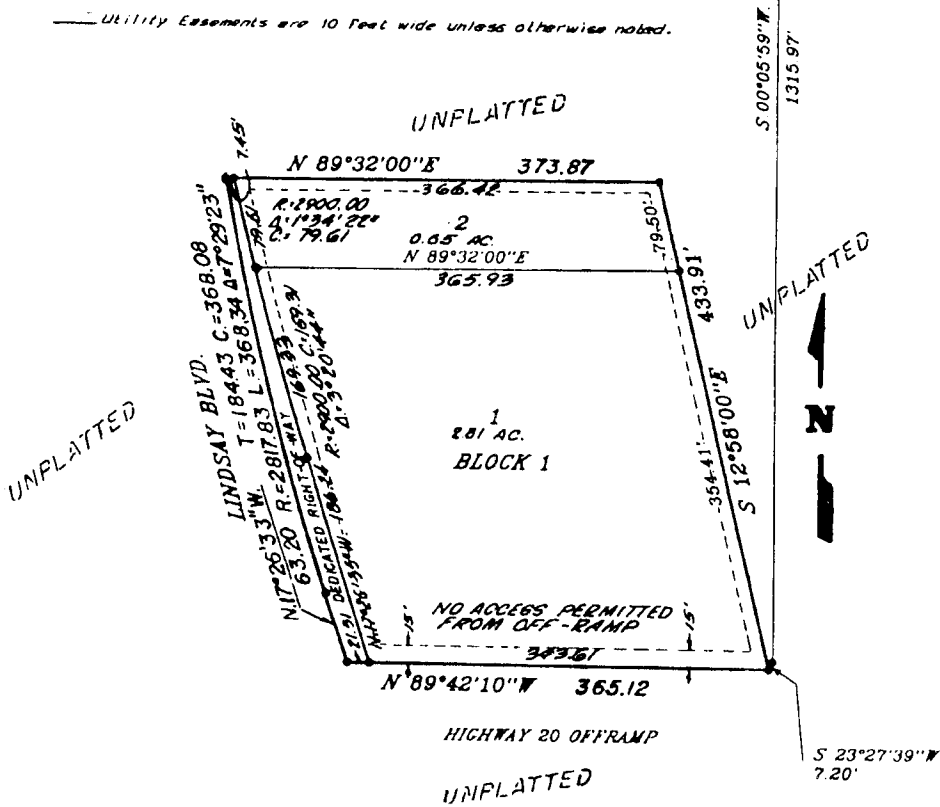
CORRECTED B P A ADDITION DIVISION NO. 1

TO THE CITY OF IDAHO FALLS, BONNEVILLE COUNTY, IDAHO
BEING PART OF THE N.W. 1/4 SECTION 13, T.2 N, R. 37 E.B.M.



NOTES

- Denotes 1/2" x 24" steel re-bar set with plastic cap, stamped L.S. 827
- Utility Easements are 10 feet wide unless otherwise noted.



First American Title Company
Idaho Falls, Idaho 83404

This sketch is made solely for the purpose of assisting in locating the premises. The company assumes no liability for alleged loss or damage which may result from reliance on this map.

