



First American Title Company

Idaho Falls, Idaho 83404

This sketch is made solely for the purpose of assisting in locating the premises. The company assumes no liability for alleged loss or damage which may result from reliance on this map.

CHIPPING
CUTTING
30' x 12' x 12' (SECTION LINE) MEASURED
10' x 12' x 12' (SECTION LINE) MEASURED
10' x 12' x 12' (SECTION LINE) MEASURED

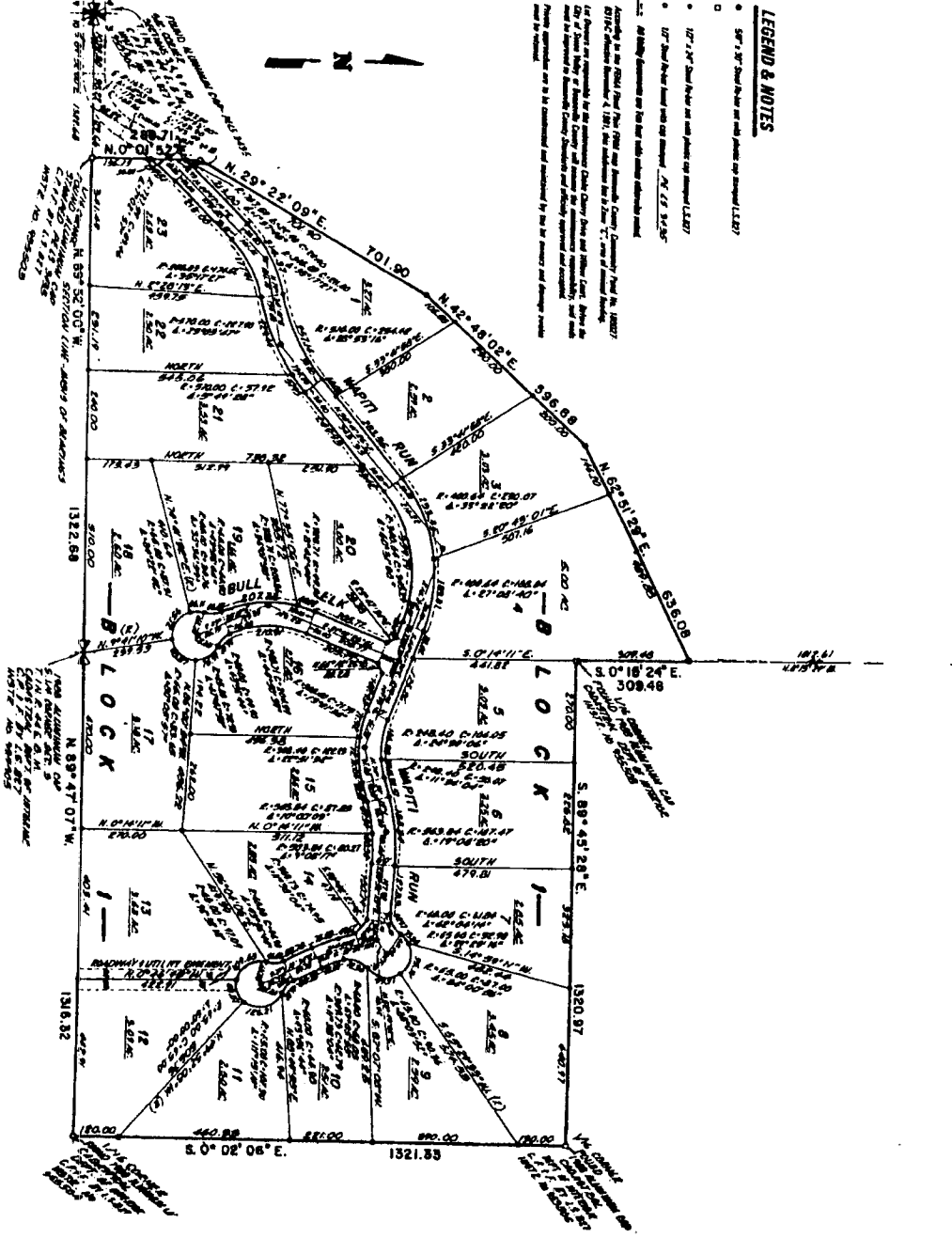
BALD MOUNTAIN CEDARS DIVISION NO. 1 AN ADDITION TO THE CITY OF SWAN VALLEY, BONNEVILLE COUNTY, IDAHO PART OF THE S. 1/2 OF SECTION 5, T. 1 N., R. 44 E., B.M.

SWAN VALLEY
BONNEVILLE COUNTY, IDAHO
SECTION 5, T. 1 N., R. 44 E., B.M.
DIVISION NO. 1
PART OF THE S. 1/2 OF SECTION 5, T. 1 N., R. 44 E., B.M.

LEGEND & NOTES

- 50' x 10' Road Right of Way (shown on map) (L. 227)
- 10' x 10' Road Right of Way (shown on map) (L. 227)
- 10' x 10' Road Right of Way (shown on map) (L. 227)
- 10' x 10' Road Right of Way (shown on map) (L. 227)

According to the 1924 Plat filed with the County Clerk, County of Bonneville, Idaho, and the 1924 Plat filed with the County Clerk, County of Bonneville, Idaho, the plat of the Bald Mountain Cedars Division No. 1, as shown on the map, is a part of the S. 1/2 of Section 5, T. 1 N., R. 44 E., B.M., and is subject to the provisions of the Bald Mountain Cedars Division No. 1, as shown on the map, and is subject to the provisions of the Bald Mountain Cedars Division No. 1, as shown on the map.



SWAN VALLEY
BONNEVILLE COUNTY, IDAHO
SECTION 5, T. 1 N., R. 44 E., B.M.
DIVISION NO. 1
PART OF THE S. 1/2 OF SECTION 5, T. 1 N., R. 44 E., B.M.