

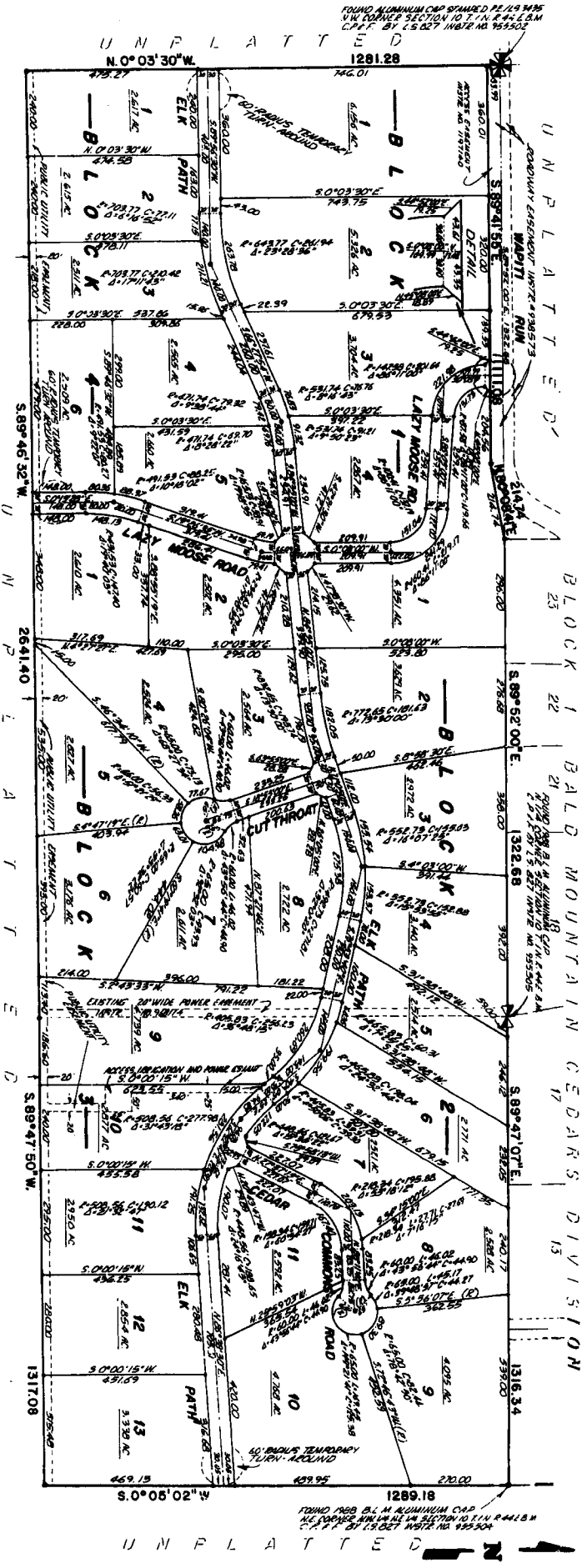
BALD MOUNTAIN TRAILS DIVISION NO. 1

AN ADDITION TO THE CITY OF SWAN VALLEY, BONNEVILLE COUNTY, IDAHO BEING PART OF THE NORTH 1/2 OF SECTION 10 T. 1 N. R. 44 E., B. M.

First American Title Company
 Idaho Falls, Idaho 83401
 While this is a photographic
 reproduction of the recorded
 plat, the Company assumes no
 liability for variations,
 if any, with a re-survey.

LEGEND & NOTES

- 5/8" x 3/4" Steel plate set with plastic cap stamped L.S. 8785
 - 1/2" x 2 1/2" Steel plate set with plastic cap stamped L.S. 8786
 - 5/8" Steel plate found with cap stamped L.S. 8787 under metal sidewalk
 - 1/2" Steel plate found with cap stamped L.S. 8788 under metal sidewalk
- A line laid with Public Utility Easement is hereby reserved along all road frontages within and the B.M. SHOWN ON PLAT.
- Oblique angles shown and points shown on this plat are not intended to be construed as evidence of the location of roads and points shown on the plat. These points and lines are shown for reference only and are not intended to be construed as evidence of the location of roads and points shown on the plat.
- According to the 1918 Plat, this 1918 map, Swan Valley Community Plat No. 18827, 0718, effective November 4, 1918, the addition of the 1918 Plat is hereby approved.



FOUND ALUMINUM CAP STAMPED PL. 19 448
 VIA FORMER SECTION 10 T. 1 N. R. 44 E. B. M.
 C.A.F. BY 15.027 INSTR. NO. 955304

UNPLATTED
 N. 0° 03' 30" W.
 1281.28

UNPLATTED
 S. 0° 05' 02" W.
 1289.18

FOUND 1988 B.M. ALUMINUM CAP
 VIA FORMER SECTION 10 T. 1 N. R. 44 E. B. M.
 C.A.F. BY 15.027 INSTR. NO. 955304