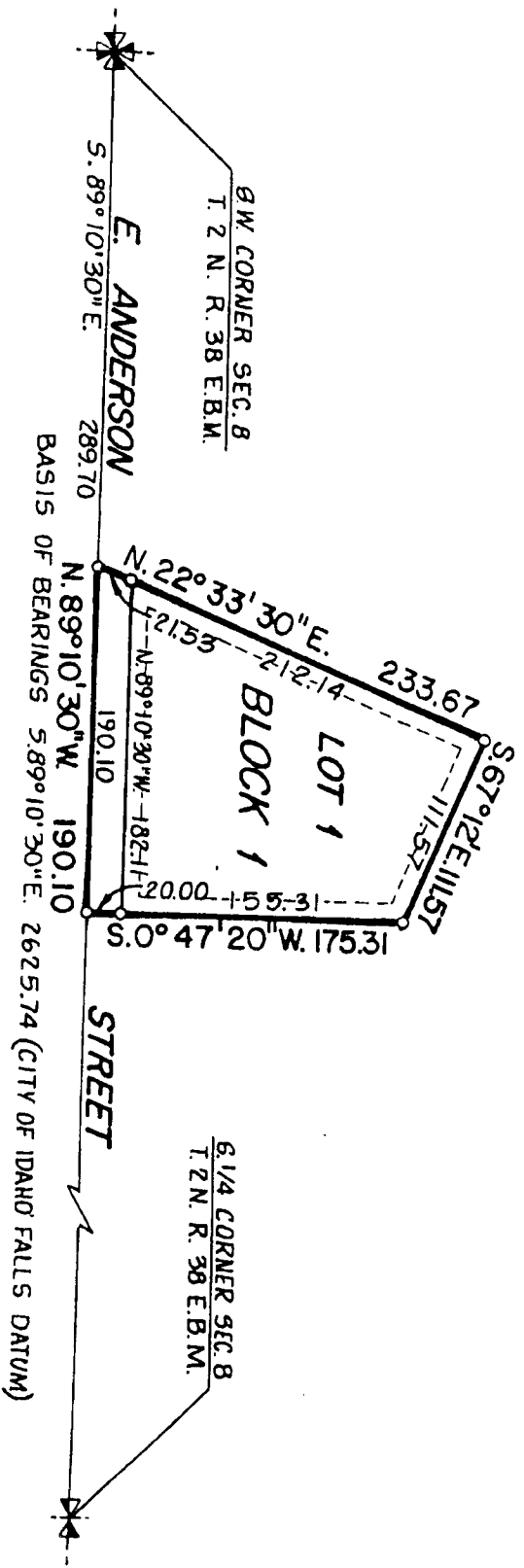


BALDWIN ENGINEERING ADDITION

DIVISION NO. 1
 CITY OF IDAHO FALLS, BONNEVILLE COUNTY, IDAHO
 A PORTION OF THE S.W. 1/4 OF SECTION 8 T. 2 N. R. 38 E. B.M.
 ELLSWORTH ENGINEERING, INC.
 IDAHO FALLS, IDAHO



First American Title Company
 Idaho Falls, Idaho 83404
 This sketch is made solely for the purpose of assisting in locating the premises. The company assumes no liability for alleged loss or damage which may result from reliance on this map.



NOTES:

- Designates Iron Rods
- Utility and Drainage
- Easements are 10 ft. wide.