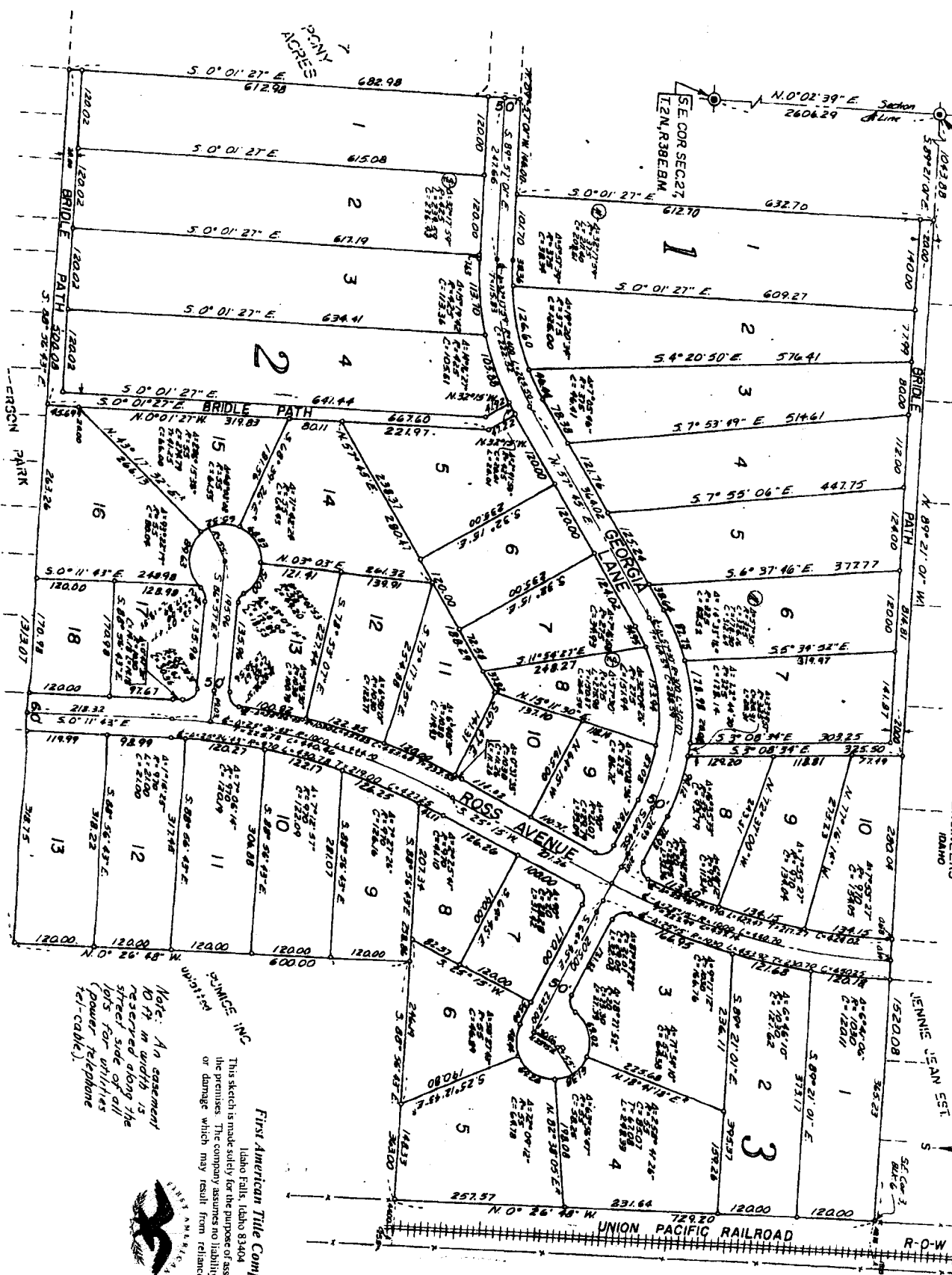


BARBARA JEAN ESTATES TO THE CITY OF AMMON, IDAHO

Part of the N/2, SW 1/4, Sec. 26, T2N, R38E, B1M,
IDAHO FALLS,
DAVID E. BENTON & ASSOCIATES
CONSULTING ENGINEERS
IDAHO



First American Title Company
 Idaho Falls, Idaho 83404

This sketch is made solely for the purpose of assisting in locating the premises. The company assumes no liability for alleged loss or damage which may result from reliance on this map.

Note: An easement 10 ft in width is reserved along the street side of all lots for utilities (power, telephone, tel-cable).

