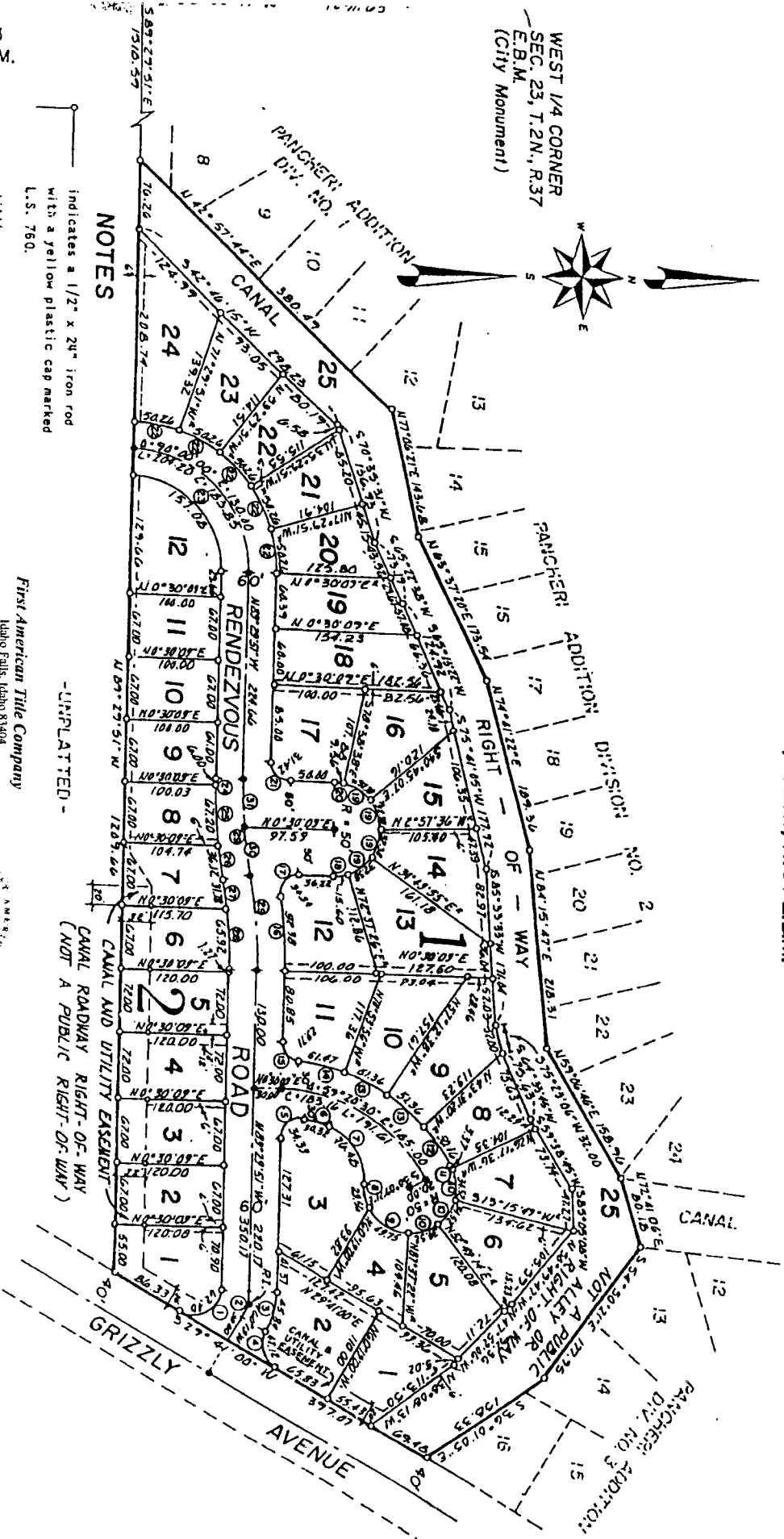
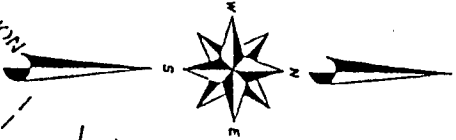


BATTLE CREEK ESTATES DIVISION NO. 1

TO THE CITY OF IDAHO FALLS, IDAHO
PART OF THE N.E. 1/4, S.W. 1/4 OF SEC. 23, T.2N., R.37E.B.M.

WEST 1/4 CORNER
SEC. 23, T.2N., R.37
E.B.M.
(City Monument)



NOTES

- indicates a 1/2" x 24" iron rod with a yellow plastic cap marked L.S. 760.
- - - utility easements are 8' thru each lot unless otherwise shown.

- UNPLATTED -

This sketch is made solely for the purpose of assisting in locating the premises. The company assumes no liability for alleged loss or damage which may result from reliance on this map.

First American Title Company

Idaho Falls, Idaho 83404

