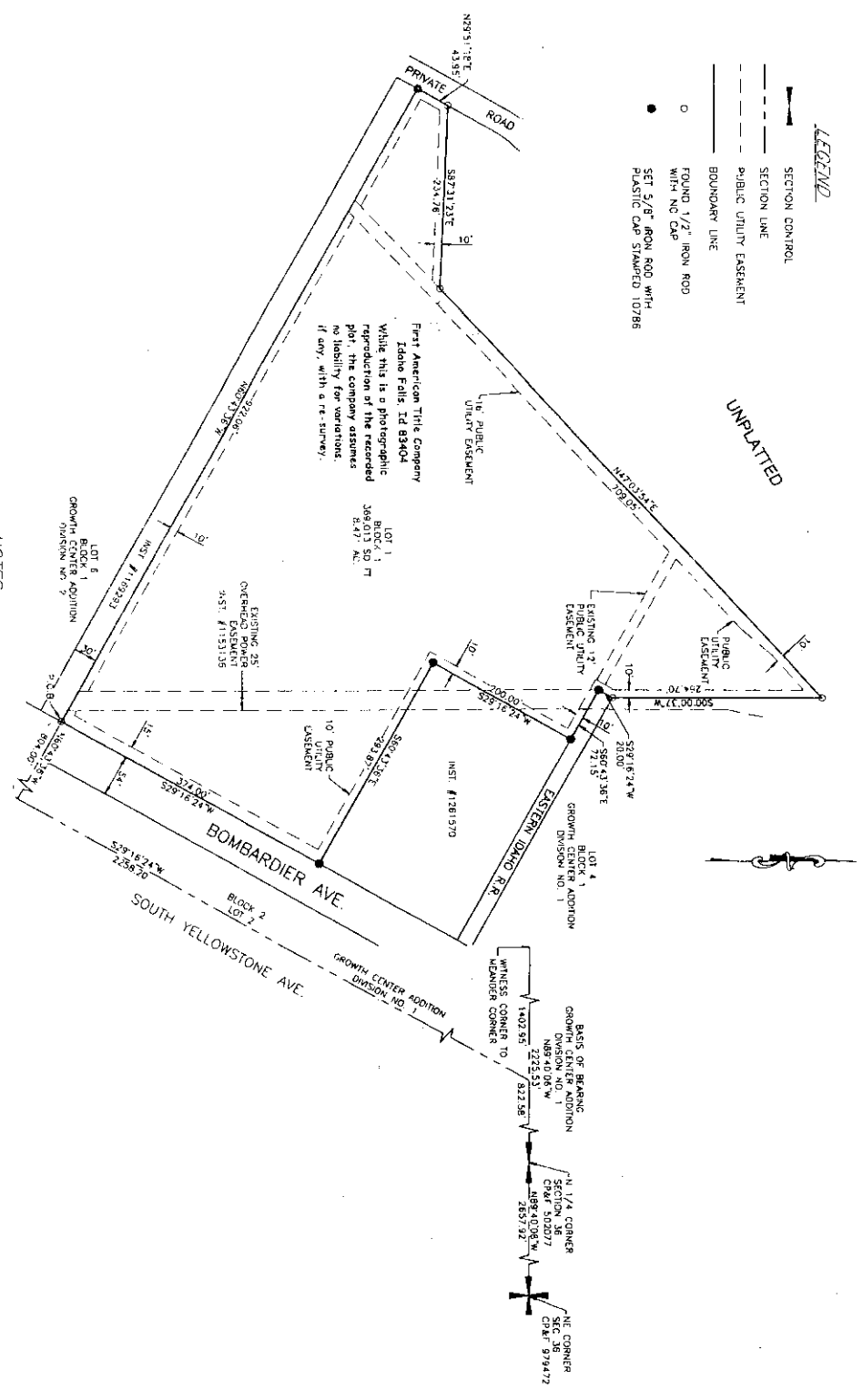
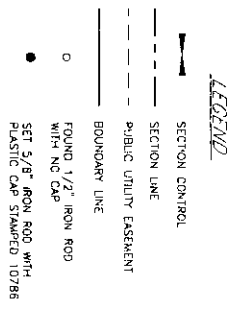
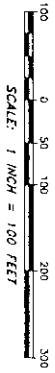


BEAN & WICHER ADDITION DIVISION NO. 1

BEING A REPLAT OF PART OF LOT 5 BLOCK 1 OF
GROWTH CENTER ADDITION DIVISION NO. 1, SECTION 35 & 36, T. 2N., R. 37E.,
CITY OF IDAHO FALLS, BONNEVILLE COUNTY, IDAHO



First American Title Company
Idaho Falls, ID 83404
While this is a photographic reproduction of the recorded plat, the company assumes no liability for variations, if any, with a re-survey.

NOTES

1. UNLESS OTHERWISE NOTED, ALL LOTS ARE HEREBY DESIGNATED AS GOV. HAVING A DRIVEWAY DESIGNED AS FOLLOWS: DRIVEWAYS SHALL BE TEN (10) FEET WIDE AND AN EASEMENT FOR PUBLIC UTILITIES OVER THE TEN (10) FEET ALONG ANY SUBDIVISION BOUNDARY AS SHOWN. THIS EASEMENT SHALL NOT BE ACCORDED TO ANY UTILITY OR PUBLIC SERVICE COMPANY UNLESS THE DRIVEWAY AND WALKWAYS TO EACH LOT.
2. BUILDING SETBACK AND DIMENSIONAL REQUIREMENTS IN THIS SUBDIVISION SHALL BE IN ACCORDANCE WITH THE CITY OF IDAHO FALLS ZONING REGULATIONS 2nd EDITION, CITY OF IDAHO FALLS.