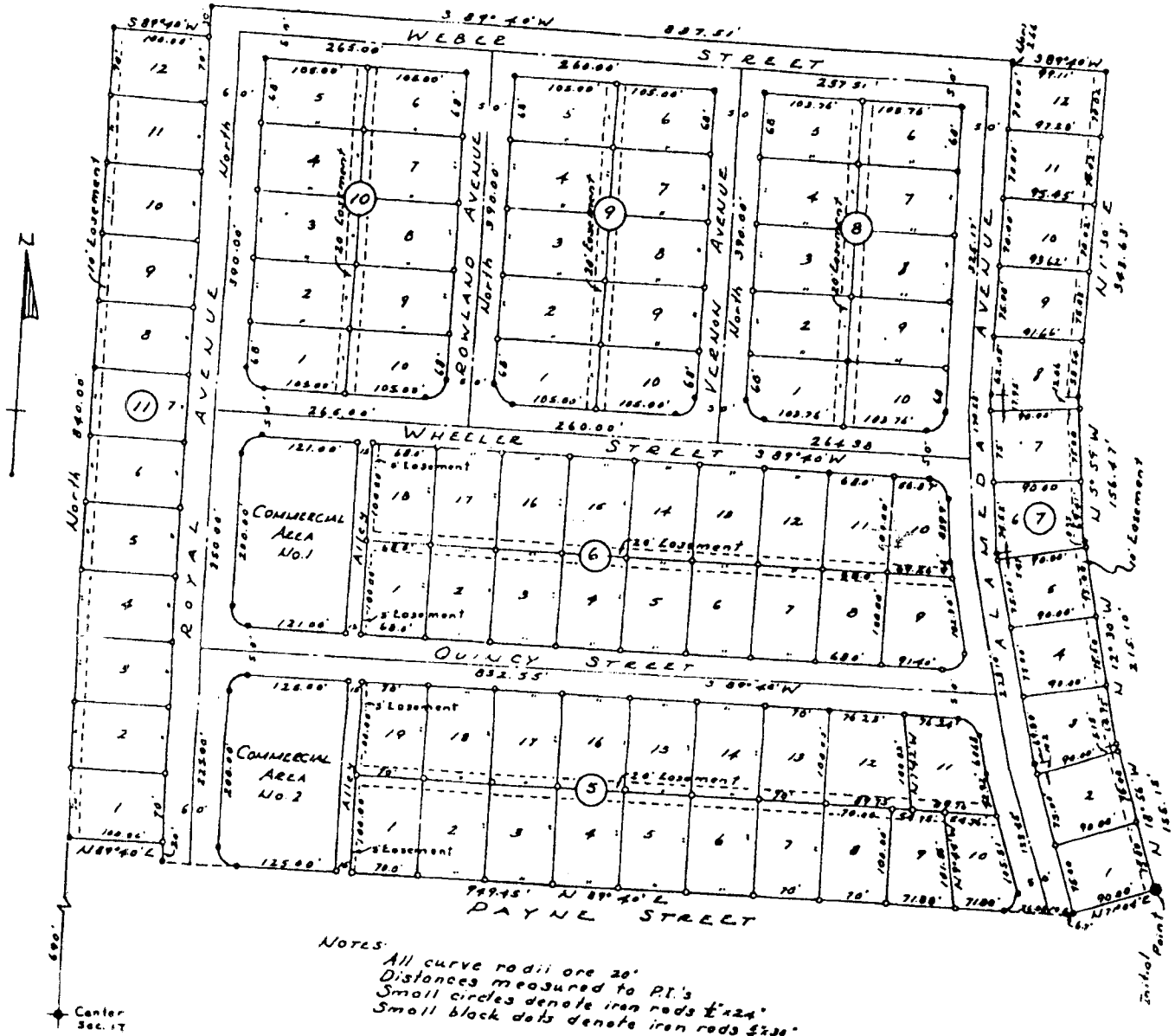


BEL-AIRE ADDITION NO. 2

W¹ NE¹ SEC. 17, TWR 2N, R 38E, 8M.
 BONNEVILLE COUNTY, IDAHO
 CITY OF IDAHO FALLS



First American Title Company

Idaho Falls, Idaho 83404

This sketch is made solely for the purpose of assisting in locating the premises. The company assumes no liability for alleged loss or damage which may result from reliance on this map.

