

BELLIN CIRCLE DIVISION NO. 1

BONNEVILLE COUNTY, IDAHO
PART OF THE N.E. 1/4 OF SECTION 22, T. 2 N., R. 37 E.B.M.

First American Title Company

Idaho Falls, Idaho 83404

This sketch is made solely for the purpose of assisting in locating the premises. The company assumes no liability for alleged loss or damage which may result from reliance on this map.



NOTES

EACH LOT IS RESPONSIBLE FOR ITS OWN WATER SUPPLY.

• DENOTES IRON RODS
--- UTILITY EASEMENTS 10 FEET WIDE UNLESS OTHERWISE NOTED.

THE MAINTENANCE OF STREETS IS DEPENDANT ON IMPROVEMENTS TO COUNTY STANDARDS.

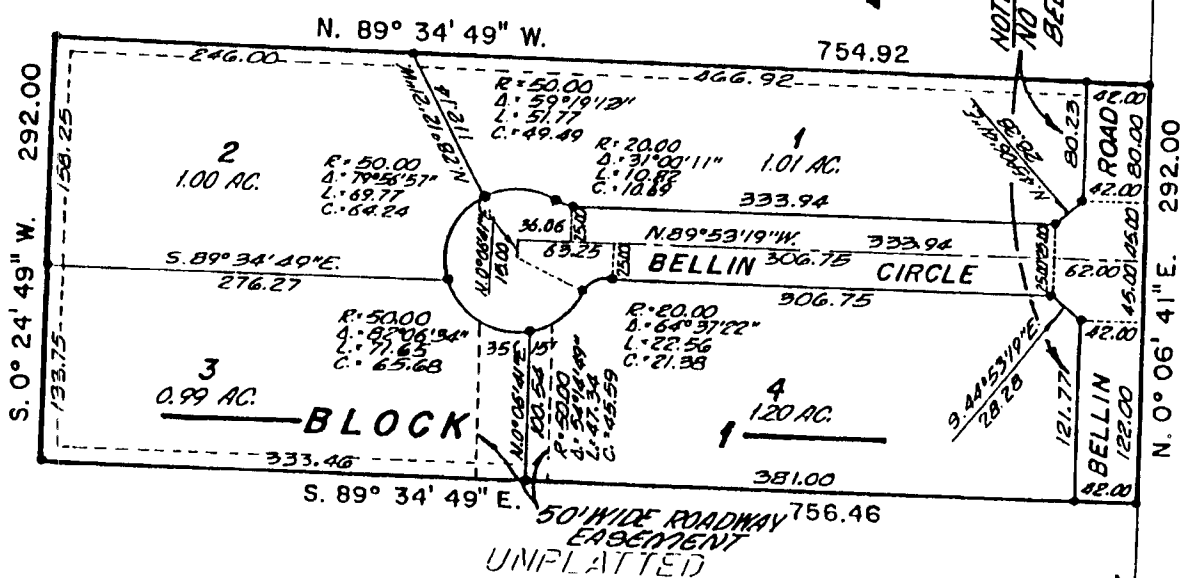


SCALE
1" = 100'

MEIKLE SUBDIVISION

NOTE:
NO VEHICULAR ACCESS ONTO BELLIN ROAD ON LOTS 1 & 4

N.E. CORNER SEC. 22
T. 2 N. R. 37 E. B.M.
N. 0° 06' 41" E. 2005.05'



UNPLATTED

UNPLATTED

UNPLATTED