

BELT LOOP SUBDIVISION DIVISION NO. 1

BONNEVILLE COUNTY, IDAHO

THE EAST 1/2 OF THE EAST 1/2 OF THE S.E. 1/4 OF SEC. 9, T. 2 N., R. 38 E.B.M.

CURVE DATA

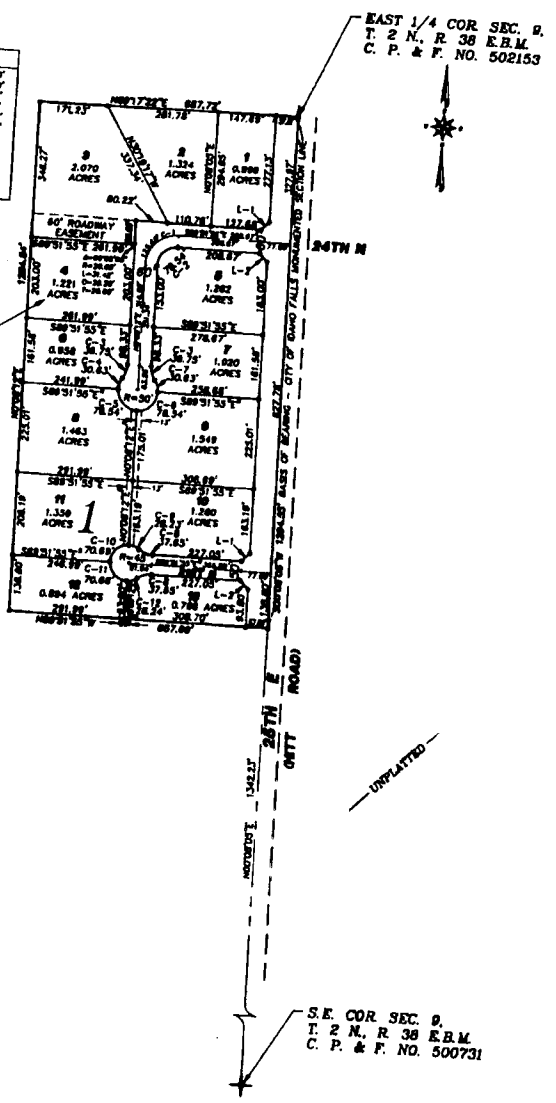
NO.	DELTA	RADIUS	L	C	T
1	88°29'33"	80.00'	125.87'	113.14'	80.00'
2	88°59'31"	50.00'	78.34'	70.71'	50.00'
3	35°05'48"	80.00'	56.75'	36.18'	18.87'
4	35°05'38"	50.00'	30.63'	30.12'	15.81'
5	88°58'51"	50.00'	78.34'	70.71'	50.00'
6	88°00'07"	80.00'	78.34'	70.71'	50.00'
7	33°04'41"	80.00'	30.63'	30.12'	15.81'
8	35°37'08"	80.00'	30.63'	37.03'	18.47'
9	35°36'38"	80.00'	28.21'	27.77'	14.80'
10	88°00'07"	45.00'	28.21'	43.84'	45.00'
11	88°58'21"	45.00'	70.88'	63.84'	45.00'
12	35°37'08"	45.00'	28.24'	27.78'	14.80'

LINE TABLE

NO.	BEARING AND DISTANCE
L1	S43°28'03"W 28.28'
L2	S44°51'53"E 28.28'

Radius Filet in lot 4 is dedicated as part of 60' Roadway easement.

UNPLATTED



UNPLATTED

S.E. COR. SEC. 9,
T. 2 N., R. 38 E.B.M.
C. P. & F. NO. 500731

First American Title Company
Idaho Falls, Idaho 83404

This sketch is made solely for the purpose of assisting in locating the premises. The company assumes no liability for alleged loss or damage which may result from reliance on this map.



NOTES

- indicates a 1/2" x 24" iron rod placed with a yellow plastic cap marked L.S. 7380.
- - - utility easements are 8' through each lot unless otherwise shown.
- - - a 10' wide utility easement is reserved along the street side of all lots.
- 1.000 ACRES indicates lot area in acres.