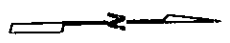


BENTLEY BUSINESS PARK

DIVISION NO. 1

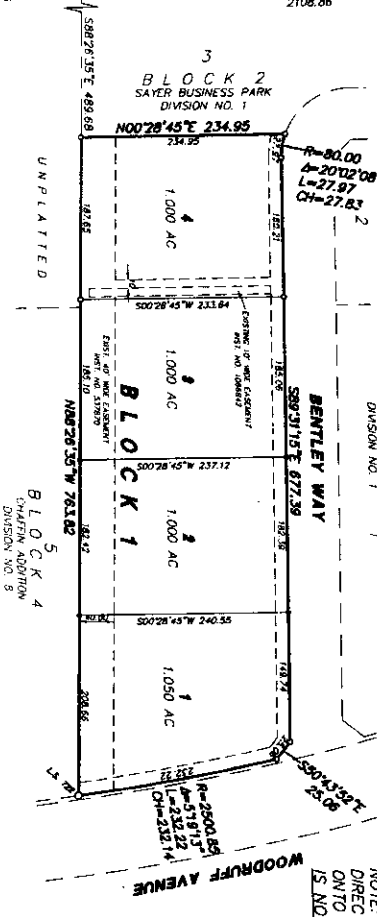
AN ADDITION TO THE CITY OF IDAHO FALLS, BONNEVILLE COUNTY, IDAHO

INCLUDING A REPLAT OF LOT 1 AND 2, BLOCK 2, SAYER BUSINESS PARK, DIVISION NO. 1
LYING IN THE NW 1/4 OF SECTION 16, T2N, R30E, B1M



BRASS CAP
N.W. COR. SECTION 16
T2N, R30E, B1M
CORN. B.M. L.S. 50071
N57E, 1/4 L. 248.98

SECTION LINE (BASIS OF BEARING)
CITY OF IDAHO FALLS DATUM - PRE 2004
N00°28'45"E 2624.86



IRRIGATION WATER RIGHTS STATEMENT

Water rights and assessment obligations are not dependent on the lands included within this plat and within this subdivision and may require a water right.

First American Title Company
Tahoe Falls, ID 83404
While this is a photographic
reproduction of the recorded
plat, the company assumes
no liability for variations,
if any, with a re-survey.

LEGEND & NOTES

- 1/7" x 1/4" Steel ruler set with plastic case stamped L.S. 8719
 - 5/8" Steel ruler found with case stamped L.S. 1722 unless noted otherwise
 - 1/2" Steel ruler found with case stamped L.S. 8795 unless noted otherwise
- A 15 foot wide Public Utility Easement is hereby granted/reserved along all road frontages within each lot. All other public utility easements are as shown.