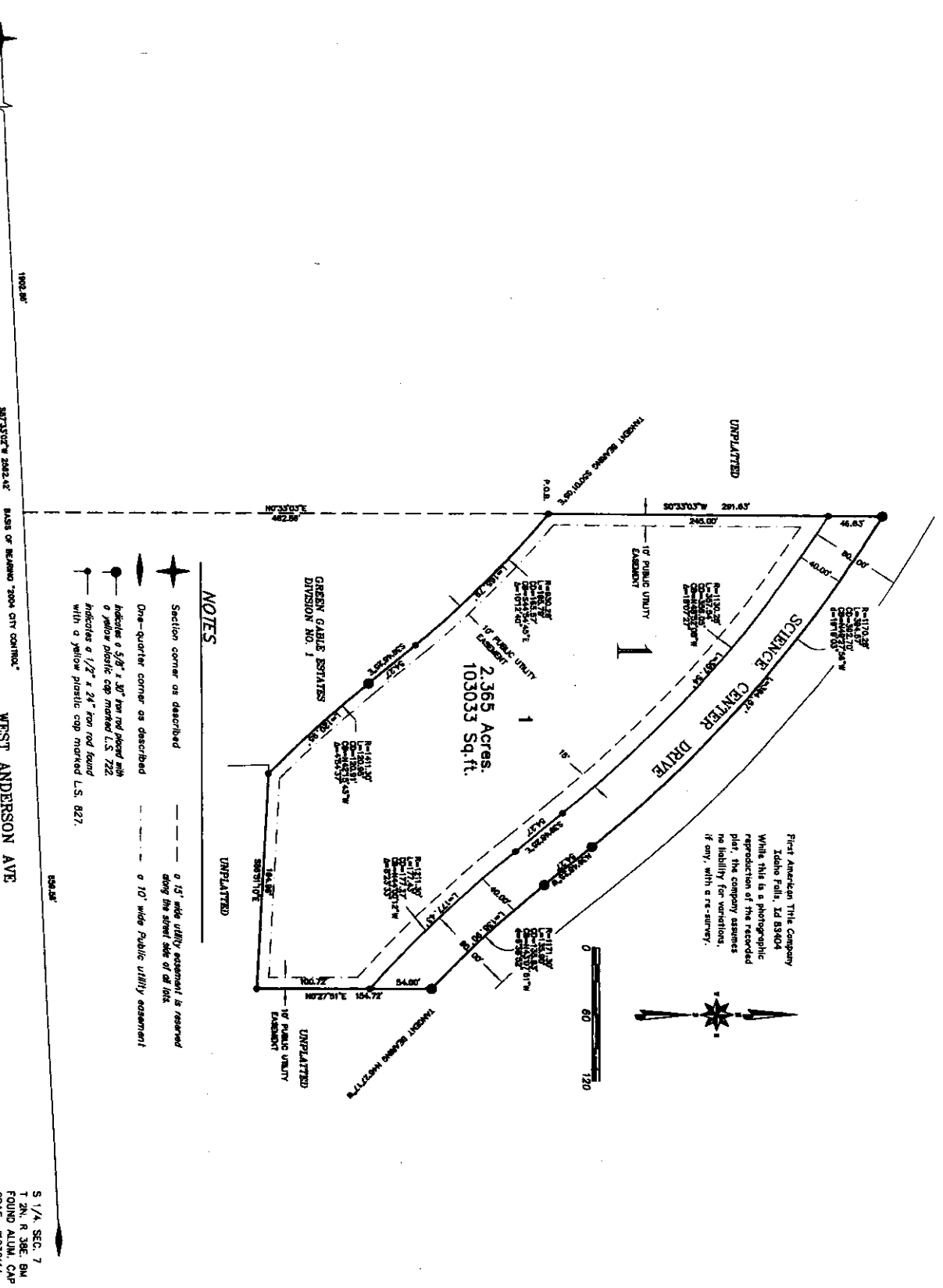


BERKSHIRE APARTMENTS DIVISION NO. 1

CITY OF IDAHO FALLS, BONNEVILLE COUNTY, IDAHO
A PART OF THE S.W. 1/4 OF SECTION 7, T. 2 N., R. 36 E.B.M.



First American Title Company
Idaho Falls, ID 83404
While this is a photographic reproduction of the recorded plat, the company assumes no liability for variations, if any, with a re-survey.

NOTES

- Section corner as described
- One-quarter corner as described
- Indicates a 5/8" x 3/8" iron rod placed with a yellow plastic cap marked L.S. 722
- Indicates a 1/2" x 24" iron rod found with a yellow plastic cap marked L.S. 827.

SW CORNER SEC. 7
T. 2N., R. 36E. B.M.
FOUND BRASS CAP
CP&F #902151

S 1/4, SEC. 7
T. 2N., R. 36E. B.M.
FOUND ALUM. CAP
CP&F #1036114