

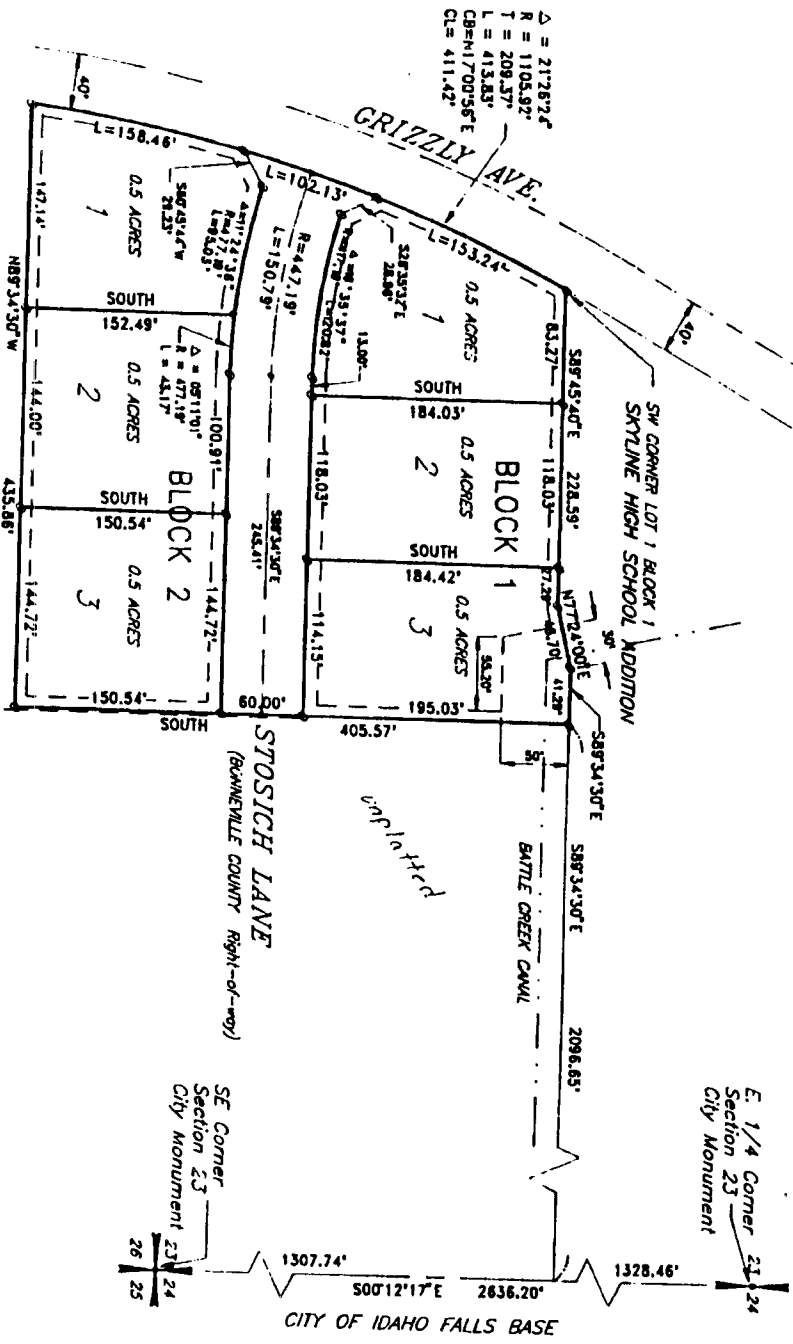
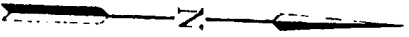
BERRYBROOK ESTATES DIVISION NO. 1

AN ADDITION TO THE CITY OF IDAHO FALLS, BONNEVILLE COUNTY, IDAHO
PART OF THE SE 1/4, SECTION 23, T.2N., R.37E., B.M.

First American Title Company

Idaho Falls, Idaho 83404

This sketch is made solely for the purpose of assisting in locating the premises. The company assumes no liability for alleged loss or damage which may result from reliance on this map.



LEGEND

Section control corners

Placed 1/2" iron rod with cap marked P.L.S. 4563

Utility easements are 10' wide along the frontage of all lots. Side yard and rear yard easements are 8' unless otherwise shown.

impl. la Hed