

# BINGHAM ADDITION

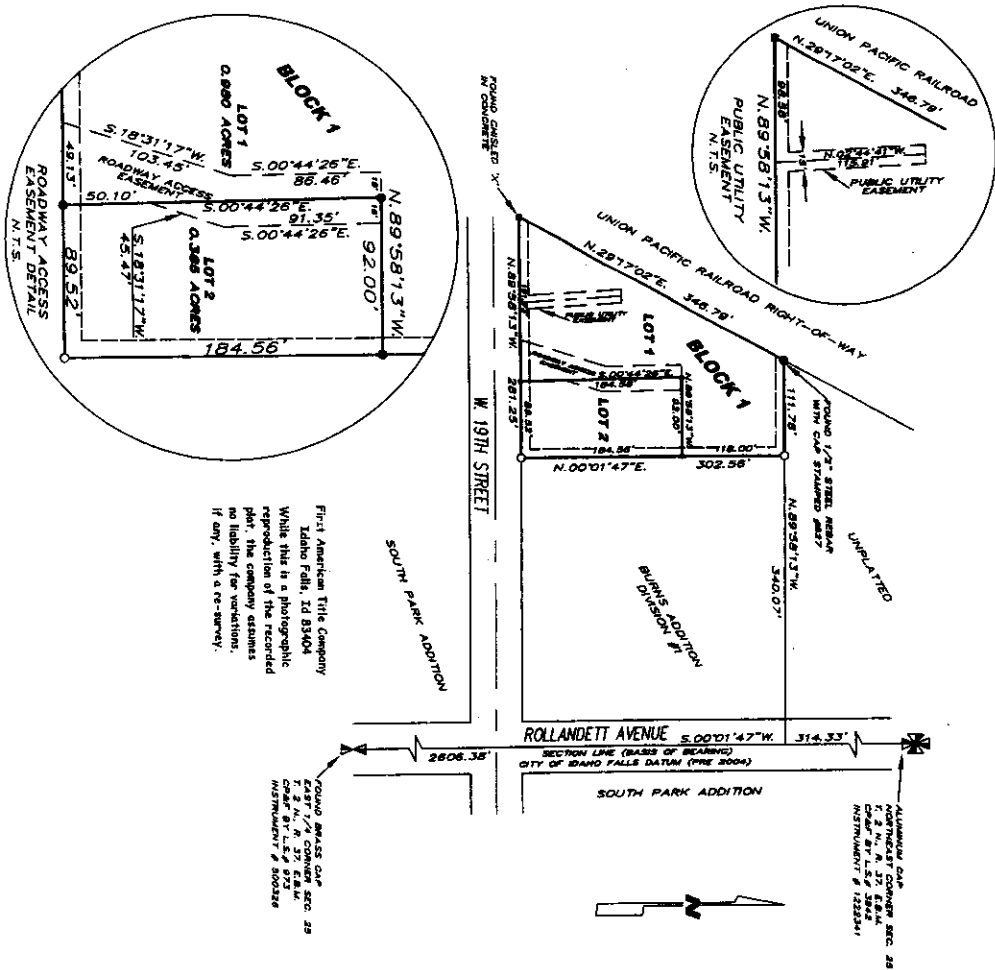
## DIVISION NO. 1

AN ADDITION TO THE CITY OF IDAHO FALLS

BEING PART OF THE N.E. 1/4 N.E. 1/4 OF SECTION 25

T. 2 N., R. 37 E., B.M.

BONNEVILLE COUNTY, IDAHO



- LEGEND & NOTES**
- SET 5/8" X 3/4" STEEL REBAR WITH PLASTIC CAP # 10844
  - SET 1/2" X 3/4" STEEL REBAR WITH PLASTIC CAP STAMPED L.S. # 10844
  - FOUND 5/8" IRON ROD WITH CAP STAMPED #827
  - 10' WIDE PUBLIC UTILITY EASEMENT

First American Title Company  
 Idaho Falls, ID 83404  
 While this is a photographic reproduction of the recorded plat, the company assumes no liability for variations, if any, with a re-survey.

FOUND BRASS CAP  
 EAST 1/4 CORNER SEC. 25  
 CHAIN BY L.S. # 921  
 INSTRUMENT # 800236

FOUND BRASS CAP  
 S.W. CORNER SEC. 25  
 CHAIN BY L.S. # 921  
 INSTRUMENT # 122241