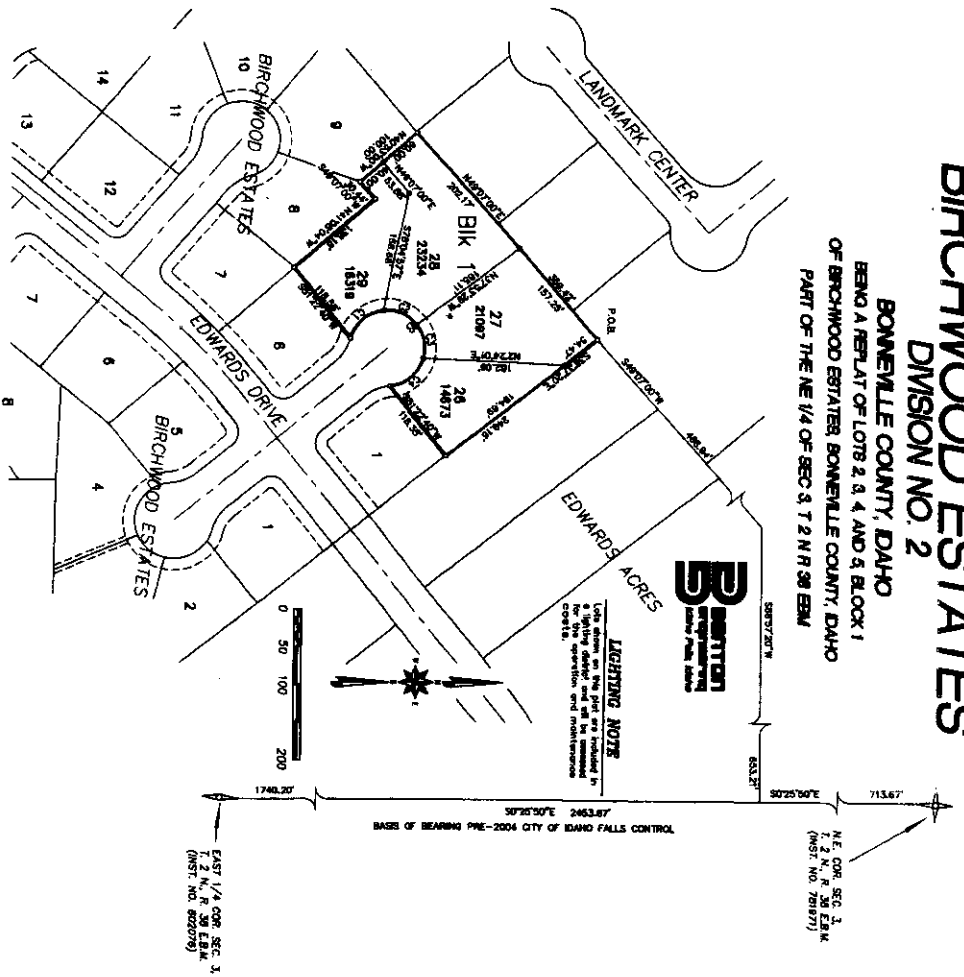


# BIRCHWOOD ESTATES

## DIVISION NO. 2

BONNEVILLE COUNTY, IDAHO  
 BEING A REPLAT OF LOTS 2, 4, AND 5, BLOCK 1  
 OF BIRCHWOOD ESTATES, BONNEVILLE COUNTY, IDAHO  
 PART OF THE NE 1/4 OF SEC. 3, T. 2 N. R. 38 E. B.M.



First American Title Company  
 Idaho Falls, ID 83404  
 While this is a photographic  
 reproduction of the recorded  
 plat, the company assumes  
 no liability for variations,  
 if any, with e-re-serve.

### NOTES

- 1. Indicate a 1" = 20' scale and include with a yellow plastic cap marked I. 722
- 2. Indicate a 1" = 20' scale and include with a yellow plastic cap marked I. 722
- 3. Indicate the use of a yellow cap
- 4. A 1" = 20' scale shall only be used for a single lot. The right to use the scale for multiple lots is reserved and shall be determined by the plat.
- 5. All buildings shall be set back a minimum of 20 feet from all street right-of-way lines.

### CURVE TABLE

CHORD	ARC	ANGLE	AREA	PERCENTAGE
0.00	0.00	0.00	0.00	0.00
0.10	0.10	0.00	0.00	0.00
0.20	0.20	0.00	0.00	0.00
0.30	0.30	0.00	0.00	0.00
0.40	0.40	0.00	0.00	0.00
0.50	0.50	0.00	0.00	0.00
0.60	0.60	0.00	0.00	0.00
0.70	0.70	0.00	0.00	0.00
0.80	0.80	0.00	0.00	0.00
0.90	0.90	0.00	0.00	0.00
1.00	1.00	0.00	0.00	0.00
1.10	1.10	0.00	0.00	0.00
1.20	1.20	0.00	0.00	0.00
1.30	1.30	0.00	0.00	0.00
1.40	1.40	0.00	0.00	0.00
1.50	1.50	0.00	0.00	0.00
1.60	1.60	0.00	0.00	0.00
1.70	1.70	0.00	0.00	0.00
1.80	1.80	0.00	0.00	0.00
1.90	1.90	0.00	0.00	0.00
2.00	2.00	0.00	0.00	0.00
2.10	2.10	0.00	0.00	0.00
2.20	2.20	0.00	0.00	0.00
2.30	2.30	0.00	0.00	0.00
2.40	2.40	0.00	0.00	0.00
2.50	2.50	0.00	0.00	0.00
2.60	2.60	0.00	0.00	0.00
2.70	2.70	0.00	0.00	0.00
2.80	2.80	0.00	0.00	0.00
2.90	2.90	0.00	0.00	0.00
3.00	3.00	0.00	0.00	0.00
3.10	3.10	0.00	0.00	0.00
3.20	3.20	0.00	0.00	0.00
3.30	3.30	0.00	0.00	0.00
3.40	3.40	0.00	0.00	0.00
3.50	3.50	0.00	0.00	0.00
3.60	3.60	0.00	0.00	0.00
3.70	3.70	0.00	0.00	0.00
3.80	3.80	0.00	0.00	0.00
3.90	3.90	0.00	0.00	0.00
4.00	4.00	0.00	0.00	0.00
4.10	4.10	0.00	0.00	0.00
4.20	4.20	0.00	0.00	0.00
4.30	4.30	0.00	0.00	0.00
4.40	4.40	0.00	0.00	0.00
4.50	4.50	0.00	0.00	0.00
4.60	4.60	0.00	0.00	0.00
4.70	4.70	0.00	0.00	0.00
4.80	4.80	0.00	0.00	0.00
4.90	4.90	0.00	0.00	0.00
5.00	5.00	0.00	0.00	0.00

EAST 1/4 COR. SEC. 3,  
 T. 2 N., R. 38 E. B.M.  
 (INST. NO. 800000)

N.E. COR. SEC. 3,  
 T. 2 N., R. 38 E. B.M.  
 (INST. NO. 78977)