

BISGO ADDITION

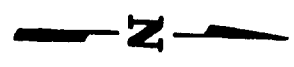
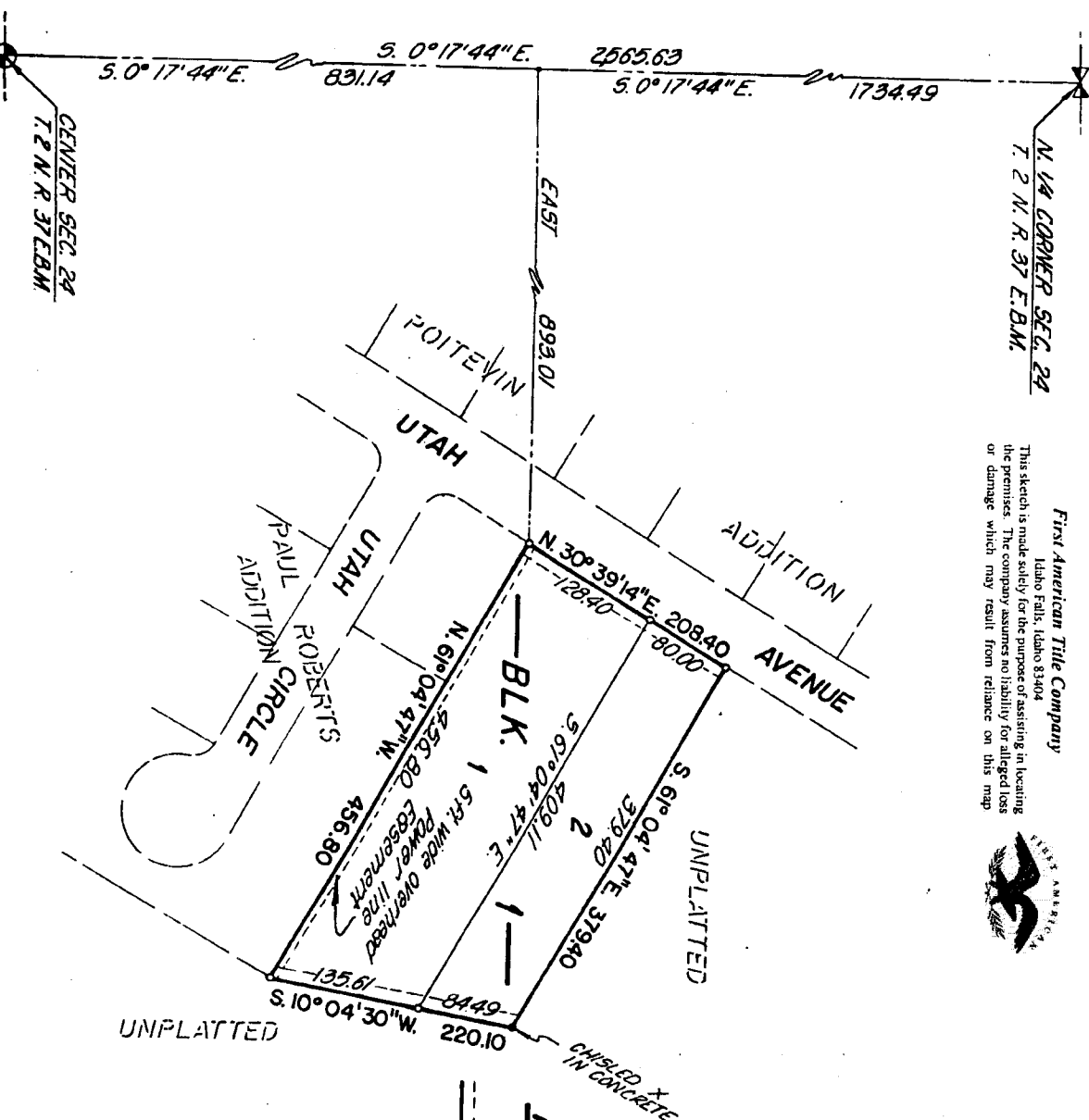
VISION NO. 1
 CITY OF IDAHO FALLS, BONNEVILLE COUNTY, IDAHO
 A PORTION OF THE NE 1/4 OF SEC. 24 T.2N.R.37E.B.M.
 ELLSWORTH ENGINEERING, INC.
 IDAHO FALLS, IDAHO

N 1/4 CORNER SEC. 24
 T.2 N. R. 37 E. B.M.

First American Title Company

Idaho Falls, Idaho 83404

This sketch is made solely for the purpose of assisting in locating the premises. The company assumes no liability for alleged loss or damage which may result from reliance on this map.



NOTES:

- Denotes Iron Rods
- Easements 10 foot wide unless otherwise noted.

CENTER SEC. 24
 T.2 N. R. 37 E. B.M.