

BJORNSON ADDITION

DIVISION NO. 1

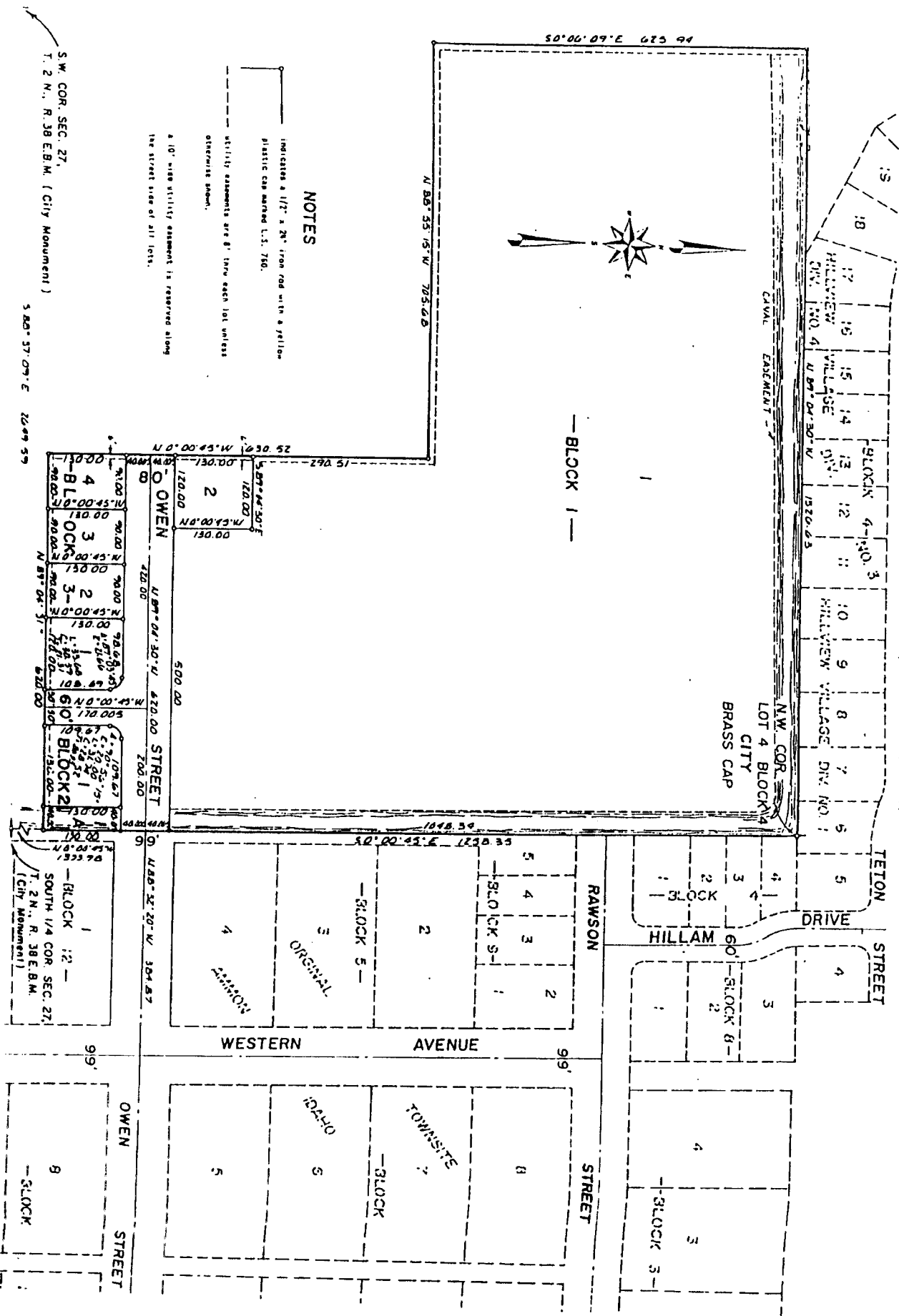
TO THE CITY OF AMMON, IDAHO

PART OF THE E. 1/2 OF THE S.W. 1/4 OF SEC. 27, T. 2 N., R. 38 E. B.M.

This sketch is made solely for the purpose of assisting in locating the premises. The company assumes no liability for alleged loss or damage which may result from reliance on this map.

First American Title Company

Idaho Falls, Idaho 83404



NOTES

- INDICATES A 1/2" x 2" IRON ROD WITH A YELLOW PLASTIC CAP MARKED L.S. 750.
- UTILITY easements are 8' (TWO) EACH LOT UNLESS OTHERWISE SHOWN.
- A 10' WIDE UTILITY easement is reserved along the street side of all lots.

S.W. COR. SEC. 27,
T. 2 N., R. 38 E. B.M. (City Monument)

S. 80° 57' 09" E. 26.49 59