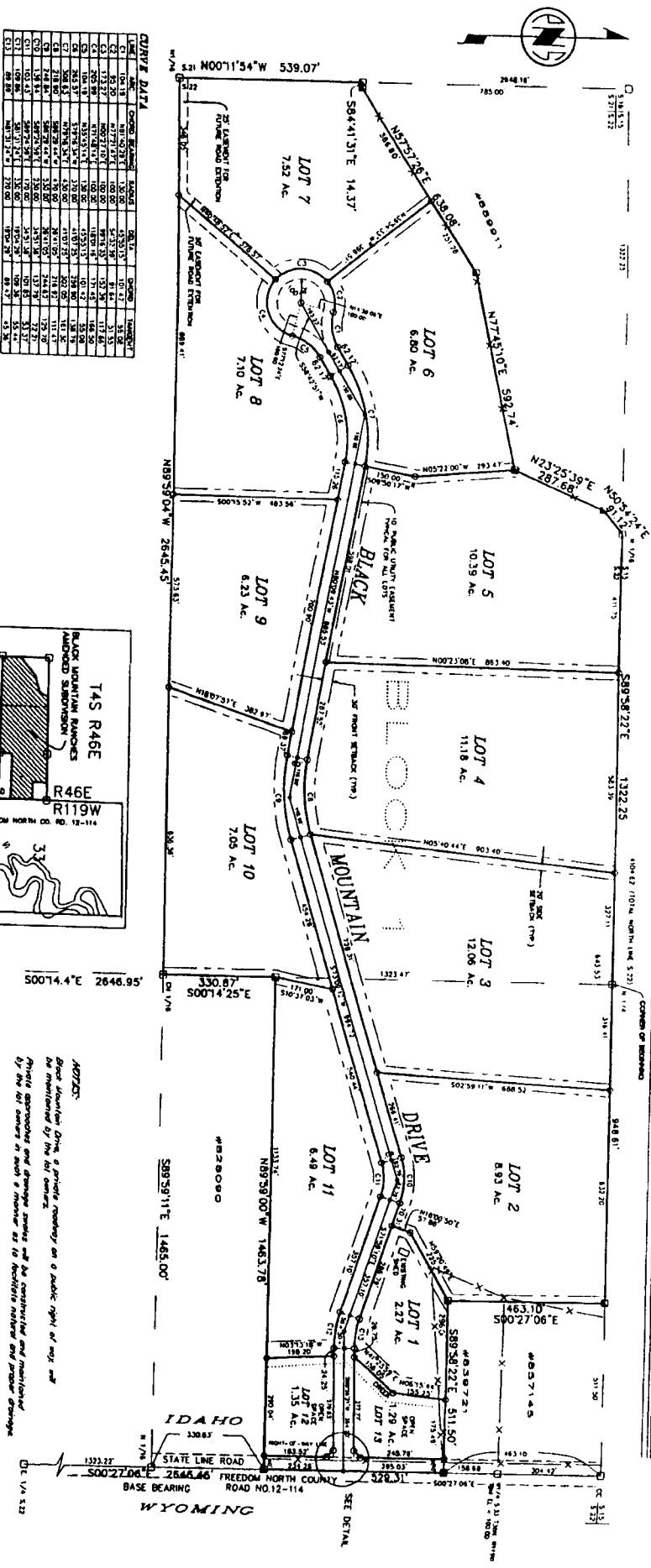


# BLACK MOUNTAIN RANCHES AMENDED SUBDIVISION

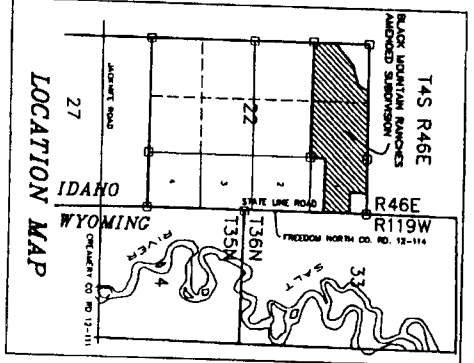
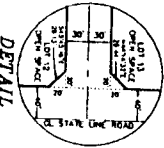


**CURVE DATA**

LOT	CHORD BEARING	CHORD DIST.	CHORD 1	TANGENT
C1	N81°42'37"E	130.00	45.3513'	107.47'
C2	S73°30'00"E	100.00	57.7339'	81.63'
C3	S70°00'00"E	100.00	61.1761'	71.42'
C4	S70°00'00"E	100.00	61.1761'	71.42'
C5	N73°30'00"E	100.00	45.3513'	107.47'
C6	S73°30'00"E	100.00	57.7339'	81.63'
C7	S70°00'00"E	100.00	61.1761'	71.42'
C8	S70°00'00"E	100.00	61.1761'	71.42'
C9	N73°30'00"E	100.00	45.3513'	107.47'
C10	S73°30'00"E	100.00	57.7339'	81.63'
C11	S70°00'00"E	100.00	61.1761'	71.42'
C12	S70°00'00"E	100.00	61.1761'	71.42'
C13	N73°30'00"E	100.00	45.3513'	107.47'
C14	S73°30'00"E	100.00	57.7339'	81.63'
C15	S70°00'00"E	100.00	61.1761'	71.42'

**LEGEND**

- ADJACENT COUNTY JURISDICTION AND RANGE RECORD PLATS OR TO BE FILED
- PROJECTED 1/2 SECTION 22 AND 27 WITH ADJACENT COUNTY JURISDICTION AND RANGE RECORD PLATS OR TO BE FILED
- PROJECTED 1/2 SECTION 22 AND 27 WITH ADJACENT COUNTY JURISDICTION AND RANGE RECORD PLATS OR TO BE FILED
- PROJECTED 1/2 SECTION 22 AND 27 WITH ADJACENT COUNTY JURISDICTION AND RANGE RECORD PLATS OR TO BE FILED
- ADJACENT COUNTY JURISDICTION AND RANGE RECORD PLATS OR TO BE FILED
- ADJACENT COUNTY JURISDICTION AND RANGE RECORD PLATS OR TO BE FILED
- ADJACENT COUNTY JURISDICTION AND RANGE RECORD PLATS OR TO BE FILED
- ADJACENT COUNTY JURISDICTION AND RANGE RECORD PLATS OR TO BE FILED



**NOTES:**  
 Black Mountain Drive, a private roadway on a public right of way, will be maintained by the lot owners.  
 Private approaches and driveway easements will be constructed and maintained by the lot owners in such a manner as to provide water and power drainage.  
 No certificate of occupancy will be issued until the private access roadway is constructed to the top of the oil run gravel course or above.

**First American Title Company**  
 Idaho Falls, Idaho 83404

This sketch is made solely for the purpose of assisting in locating the premises. The company assumes no liability for alleged loss or damage which may result from reliance on this map.



**FINAL PLAT**  
**BLACK MOUNTAIN RANCHES AMENDED**  
**SUBDIVISION**  
 WITHIN  
 N1/2 SECTION 22  
 T4S R46E  
 BONNEVILLE COUNTY, IDAHO