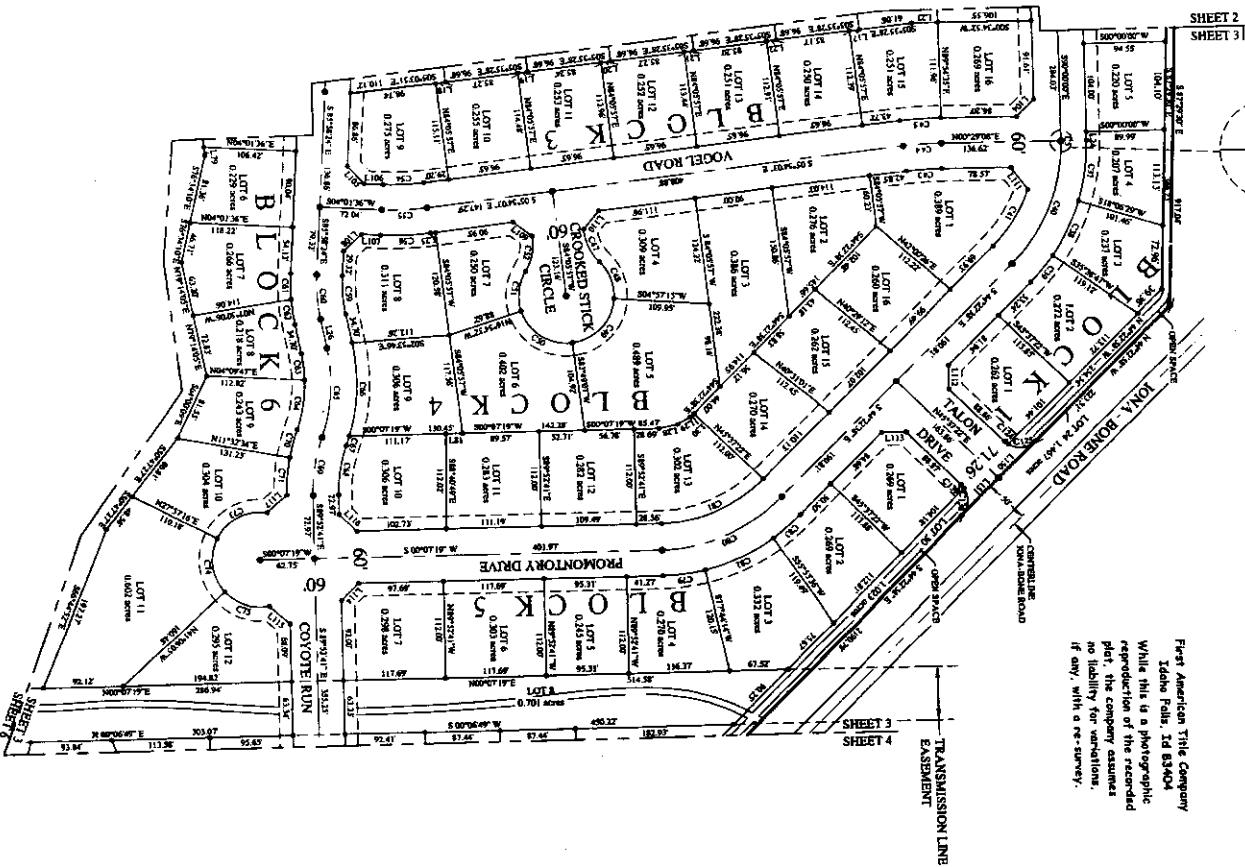


# FINAL PLAT OF BLACKTAIL RIDGE, PHASE I PART OF SECTION 8, T. 2N., R. 39E., B.M., BONNEVILLE COUNTY, IDAHO

First American Title Company  
 Idaho Falls, ID 83404  
 While this is a photographic  
 reproduction of the recorded  
 plat, the company assumes  
 no liability for variations,  
 if any, with a re-survey.



CURVE	RADIUS	DELTA	LENGTH	CHORD	CHORD BEARING
C1	200.00	0°00'29"	0.49	0.49	S89°59'28"W
C2	200.00	18°00'29"	72.69	72.99	N89°56'46"W
C3	200.00	17°32'18"	70.40	70.13	N89°07'22"W
C4	200.00	9°58'33"	40.05	40.00	N48°07'15"W
C5	200.00	45°42'06"	158.53	153.33	N67°13'41"W
C6	180.00	26°15'55"	77.93	77.23	N57°30'26"W
C7	180.00	62°31'11"	44.59	44.56	S02°42'27"E
C8	400.00	62°31'11"	41.93	41.78	N65°48'20"E
C9	600.00	49°44'45"	42.67	41.78	S02°42'27"E
C10	600.00	49°44'45"	42.67	41.78	N65°48'20"E
C11	600.00	49°44'45"	42.67	41.78	S02°42'27"E
C12	600.00	49°44'45"	42.67	41.78	N65°48'20"E
C13	600.00	49°44'45"	42.67	41.78	S02°42'27"E
C14	600.00	49°44'45"	42.67	41.78	N65°48'20"E
C15	600.00	49°44'45"	42.67	41.78	S02°42'27"E
C16	600.00	49°44'45"	42.67	41.78	N65°48'20"E
C17	600.00	49°44'45"	42.67	41.78	S02°42'27"E
C18	600.00	49°44'45"	42.67	41.78	N65°48'20"E
C19	600.00	49°44'45"	42.67	41.78	S02°42'27"E
C20	600.00	49°44'45"	42.67	41.78	N65°48'20"E
C21	600.00	49°44'45"	42.67	41.78	S02°42'27"E
C22	600.00	49°44'45"	42.67	41.78	N65°48'20"E
C23	600.00	49°44'45"	42.67	41.78	S02°42'27"E
C24	600.00	49°44'45"	42.67	41.78	N65°48'20"E
C25	600.00	49°44'45"	42.67	41.78	S02°42'27"E
C26	600.00	49°44'45"	42.67	41.78	N65°48'20"E
C27	600.00	49°44'45"	42.67	41.78	S02°42'27"E
C28	600.00	49°44'45"	42.67	41.78	N65°48'20"E
C29	600.00	49°44'45"	42.67	41.78	S02°42'27"E
C30	600.00	49°44'45"	42.67	41.78	N65°48'20"E
C31	600.00	49°44'45"	42.67	41.78	S02°42'27"E
C32	600.00	49°44'45"	42.67	41.78	N65°48'20"E
C33	600.00	49°44'45"	42.67	41.78	S02°42'27"E
C34	600.00	49°44'45"	42.67	41.78	N65°48'20"E
C35	600.00	49°44'45"	42.67	41.78	S02°42'27"E
C36	600.00	49°44'45"	42.67	41.78	N65°48'20"E
C37	600.00	49°44'45"	42.67	41.78	S02°42'27"E
C38	600.00	49°44'45"	42.67	41.78	N65°48'20"E
C39	600.00	49°44'45"	42.67	41.78	S02°42'27"E
C40	600.00	49°44'45"	42.67	41.78	N65°48'20"E
C41	600.00	49°44'45"	42.67	41.78	S02°42'27"E
C42	600.00	49°44'45"	42.67	41.78	N65°48'20"E
C43	600.00	49°44'45"	42.67	41.78	S02°42'27"E
C44	600.00	49°44'45"	42.67	41.78	N65°48'20"E
C45	600.00	49°44'45"	42.67	41.78	S02°42'27"E
C46	600.00	49°44'45"	42.67	41.78	N65°48'20"E
C47	600.00	49°44'45"	42.67	41.78	S02°42'27"E
C48	600.00	49°44'45"	42.67	41.78	N65°48'20"E
C49	600.00	49°44'45"	42.67	41.78	S02°42'27"E
C50	600.00	49°44'45"	42.67	41.78	N65°48'20"E
C51	600.00	49°44'45"	42.67	41.78	S02°42'27"E
C52	600.00	49°44'45"	42.67	41.78	N65°48'20"E
C53	600.00	49°44'45"	42.67	41.78	S02°42'27"E
C54	600.00	49°44'45"	42.67	41.78	N65°48'20"E
C55	600.00	49°44'45"	42.67	41.78	S02°42'27"E
C56	600.00	49°44'45"	42.67	41.78	N65°48'20"E
C57	600.00	49°44'45"	42.67	41.78	S02°42'27"E
C58	600.00	49°44'45"	42.67	41.78	N65°48'20"E
C59	600.00	49°44'45"	42.67	41.78	S02°42'27"E
C60	600.00	49°44'45"	42.67	41.78	N65°48'20"E
C61	600.00	49°44'45"	42.67	41.78	S02°42'27"E
C62	600.00	49°44'45"	42.67	41.78	N65°48'20"E
C63	600.00	49°44'45"	42.67	41.78	S02°42'27"E
C64	600.00	49°44'45"	42.67	41.78	N65°48'20"E
C65	600.00	49°44'45"	42.67	41.78	S02°42'27"E
C66	600.00	49°44'45"	42.67	41.78	N65°48'20"E
C67	600.00	49°44'45"	42.67	41.78	S02°42'27"E
C68	600.00	49°44'45"	42.67	41.78	N65°48'20"E
C69	600.00	49°44'45"	42.67	41.78	S02°42'27"E
C70	600.00	49°44'45"	42.67	41.78	N65°48'20"E
C71	600.00	49°44'45"	42.67	41.78	S02°42'27"E
C72	600.00	49°44'45"	42.67	41.78	N65°48'20"E
C73	600.00	49°44'45"	42.67	41.78	S02°42'27"E
C74	600.00	49°44'45"	42.67	41.78	N65°48'20"E
C75	600.00	49°44'45"	42.67	41.78	S02°42'27"E
C76	600.00	49°44'45"	42.67	41.78	N65°48'20"E
C77	600.00	49°44'45"	42.67	41.78	S02°42'27"E
C78	600.00	49°44'45"	42.67	41.78	N65°48'20"E
C79	600.00	49°44'45"	42.67	41.78	S02°42'27"E
C80	600.00	49°44'45"	42.67	41.78	N65°48'20"E
C81	600.00	49°44'45"	42.67	41.78	S02°42'27"E
C82	600.00	49°44'45"	42.67	41.78	N65°48'20"E
C83	600.00	49°44'45"	42.67	41.78	S02°42'27"E
C84	600.00	49°44'45"	42.67	41.78	N65°48'20"E
C85	600.00	49°44'45"	42.67	41.78	S02°42'27"E
C86	600.00	49°44'45"	42.67	41.78	N65°48'20"E
C87	600.00	49°44'45"	42.67	41.78	S02°42'27"E
C88	600.00	49°44'45"	42.67	41.78	N65°48'20"E
C89	600.00	49°44'45"	42.67	41.78	S02°42'27"E
C90	600.00	49°44'45"	42.67	41.78	N65°48'20"E
C91	600.00	49°44'45"	42.67	41.78	S02°42'27"E
C92	600.00	49°44'45"	42.67	41.78	N65°48'20"E
C93	600.00	49°44'45"	42.67	41.78	S02°42'27"E
C94	600.00	49°44'45"	42.67	41.78	N65°48'20"E
C95	600.00	49°44'45"	42.67	41.78	S02°42'27"E
C96	600.00	49°44'45"	42.67	41.78	N65°48'20"E
C97	600.00	49°44'45"	42.67	41.78	S02°42'27"E
C98	600.00	49°44'45"	42.67	41.78	N65°48'20"E
C99	600.00	49°44'45"	42.67	41.78	S02°42'27"E
C100	600.00	49°44'45"	42.67	41.78	N65°48'20"E
C101	600.00	49°44'45"	42.67	41.78	S02°42'27"E
C102	600.00	49°44'45"	42.67	41.78	N65°48'20"E
C103	600.00	49°44'45"	42.67	41.78	S02°42'27"E
C104	600.00	49°44'45"	42.67	41.78	N65°48'20"E
C105	600.00	49°44'45"	42.67	41.78	S02°42'27"E
C106	600.00	49°44'45"	42.67	41.78	N65°48'20"E
C107	600.00	49°44'45"	42.67	41.78	S02°42'27"E
C108	600.00	49°44'45"	42.67	41.78	N65°48'20"E
C109	600.00	49°44'45"	42.67	41.78	S02°42'27"E
C110	600.00	49°44'45"	42.67	41.78	N65°48'20"E
C111	600.00	49°44'45"	42.67	41.78	S02°42'27"E
C112	600.00	49°44'45"	42.67	41.78	N65°48'20"E
C113	600.00	49°44'45"	42.67	41.78	S02°42'27"E
C114	600.00	49°44'45"	42.67	41.78	N65°48'20"E
C115	600.00	49°44'45"	42.67	41.78	S02°42'27"E
C116	600.00	49°44'45"	42.67	41.78	N65°48'20"E
C117	600.00	49°44'45"	42.67	41.78	S02°42'27"E
C118	600.00	49°44'45"	42.67	41.78	N65°48'20"E
C119	600.00	49°44'45"	42.67	41.78	S02°42'27"E
C120	600.00	49°44'45"	42.67	41.78	N65°48'20"E

LINE	LENGTH	BEARING
L17	11.50	N89°53'28"W
L18	11.99	N05°35'28"W
L19	11.41	N05°35'28"W
L20	11.43	N05°35'28"W
L21	11.46	N05°35'28"W
L22	11.48	N05°35'28"W
L23	11.50	N05°35'28"W
L24	10.00	N05°35'28"W
L25	6.31	N05°35'28"W
L26	34.70	N05°35'28"W
L28	22.26	S01°10'13"E
L30	16.36	S41°21'42"E
L39	9.89	N85°17'49"E
L79	9.89	N00°07'19"E
L81	19.28	N44°45'46"W
L104	28.40	N49°01'36"E
L105	28.28	N08°01'36"E
L106	22.04	S04°01'36"W
L107	22.04	N40°58'27"W
L108	28.28	N37°58'35"E
L109	21.72	N37°58'35"E
L110	31.54	N54°31'18"E
L111	31.54	N54°31'18"E
L112	28.28	S89°22'28"E
L113	28.28	N00°57'22"E
L114	28.28	N44°52'41"W
L115	30.59	N40°13'42"E
L116	28.28	S45°07'15"W
L117	30.55	N50°47'36"W
L120	60.63	S44°22'38"E
L121	60.63	S44°22'38"E

**LEGEND**

Section Corner (As Noted)

Quarter Corner (As Noted)

Set 5/8" x 3/8" Iron Rod With Plastic Cap Stamped P.L.S. 10781

Set 1/2" x 24" Iron Rod With Plastic Cap Stamped P.L.S. 10781

Round 1/2" Iron Rod With Plastic Cap (As Noted)

Round 5/8" Iron Rod With Plastic Cap (As Noted)

Section Line

Subdivision Boundary

Lot Line

Utility Easement as Shown (15' feet wide on the fringe of all lots unless noted otherwise)

Match Line

Centerline Right-of-Way