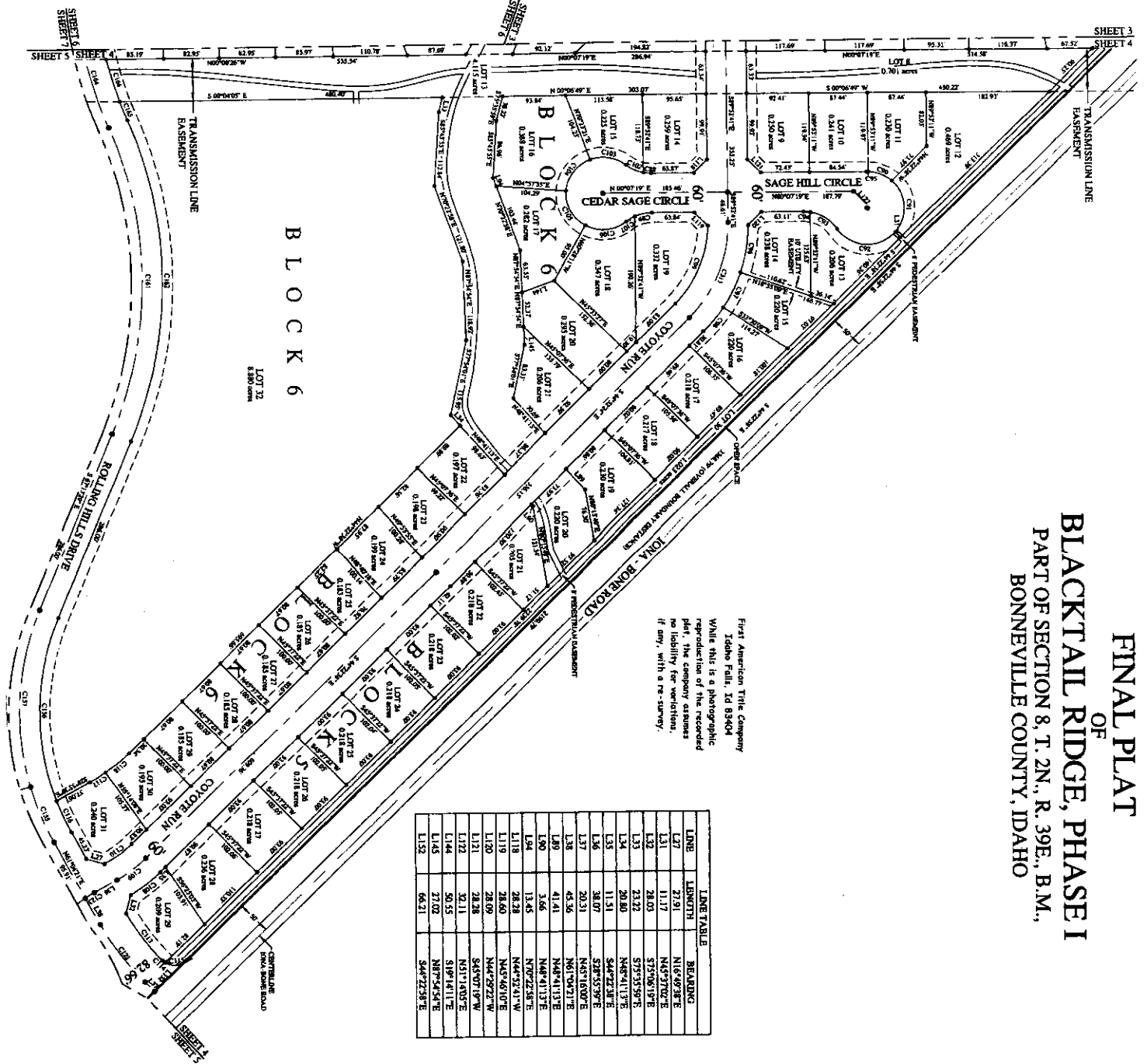


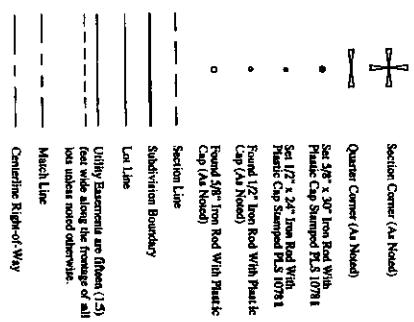
FINAL PLAT OF BLACKTAIL RIDGE, PHASE I PART OF SECTION 8, T. 2N., R. 39E., B.M., BONNEVILLE COUNTY, IDAHO

First American Title Company
 Idaho Falls, ID 83404
 While this is a photographic
 reproduction of the recorded
 plat, the company assumes
 no liability for variations,
 if any, with the survey.



LINE	LENGTH	BEARING
L27	21.91	N16°49'28"E
L31	11.17	N45°31'02"E
L32	28.03	S75°06'07"E
L33	23.22	S75°53'59"E
L34	20.80	N48°41'13"E
L35	11.51	S44°22'28"E
L36	38.07	S28°55'29"E
L37	20.31	N45°18'07"E
L38	45.36	N61°04'21"E
L39	41.41	N48°41'13"E
L40	3.66	N48°41'13"E
L44	13.45	N70°22'58"E
L49	28.28	N44°52'41"W
L119	28.60	N45°46'07"E
L120	28.09	S45°07'07"W
L121	28.28	N51°14'03"E
L122	28.11	S19°14'11"E
L144	30.55	S19°14'11"E
L145	27.02	N47°24'54"E
L152	66.21	S44°22'28"E

CURVE	RADIUS	DELTA	LENGTH	CHORD	CHORD BEARING
C88	60.00	1°18'35"	11.35	11.33	N63°46'47"E
C89	60.00	2°47'18"	25.44	25.25	S72°01'30"E
C90	35.00	3°04'25"	38.12	37.16	S71°49'40"W
C91	35.00	9°01'14"	86.58	77.91	S68°55'58"W
C92	35.00	10°34'08"	99.51	84.49	N02°31'54"E
C93	60.00	44°36'36"	48.81	47.47	S32°33'46"W
C94	60.00	8°30'03"	9.39	9.38	S04°36'21"W
C95	35.00	3°01'14"	2.90	2.90	S07°46'57"W
C96	330.00	14°30'11"	72.34	72.04	N08°02'27"W
C97	330.00	1°43'50"	58.54	58.38	N65°47'21"W
C98	330.00	11°37'27"	66.66	66.38	N59°41'09"W
C99	60.00	45°02'24"	129.69	126.57	N64°43'41"W
C100	60.00	27°11'05"	28.87	28.20	N23°01'47"E
C104	35.00	6°52'54"	55.90	53.32	S09°30'07"W
C105	35.00	6°52'54"	62.81	59.45	S29°19'25"E
C106	35.00	67°54'29"	65.19	61.44	N02°14'47"E
C107	60.00	14°12'22"	14.88	14.44	N04°25'26"W
C108	330.00	13°45'12"	55.21	55.08	S31°18'30"E
C109	330.00	15°26'59"	33.93	33.77	N36°39'08"W
C110	120.00	16°27'31"	30.32	30.14	N35°33'51"W
C111	348.63	14°24'07"	90.21	89.98	N51°12'09"E
C114	25.00	11°55'29"	5.30	5.19	N03°08'03"W
C115	25.00	78°21'47"	34.24	31.62	N03°08'03"W
C116	370.00	8°09'29"	32.57	32.53	N03°08'03"W
C117	270.00	5°30'13"	27.51	27.49	N31°30'45"W
C118	270.00	9°36'46"	45.30	45.25	N39°24'15"W
C122	400.00	15°46'12"	110.35	110.00	N53°10'17"E
C123	200.00	4°31'31"	13.89	13.89	S31°12'15"E
C135	400.00	12°58'16"	90.56	90.36	N07°33'29"E
C136	370.00	4°33'41"	281.31	274.58	S89°01'19"E
C137	400.00	38°43'54"	270.40	265.28	S66°15'26"E
C161	600.00	45°11'04"	500.50	487.44	N08°59'02"W
C162	600.00	13°00'32"	320.55	328.53	N72°45'41"E
C165	570.00	3°04'10"	30.68	30.68	N46°44'13"E
C166	570.00	6°44'35"	67.08	67.04	N77°43'29"E
C113	200.00	45°00'17"	157.10	153.09	N67°22'33"W



LEGEND

Quarter Corner (Aa Nearest)
 Section Corner (Aa Nearest)
 Section Corner (Aa Nearest)
 Subdivision Boundary
 Lot Lines
 Utility Easement an Offset (1.5') feet wide along the fringeage of all lots unless noted otherwise.
 Marsh Line
 Centerline Right-of-Way