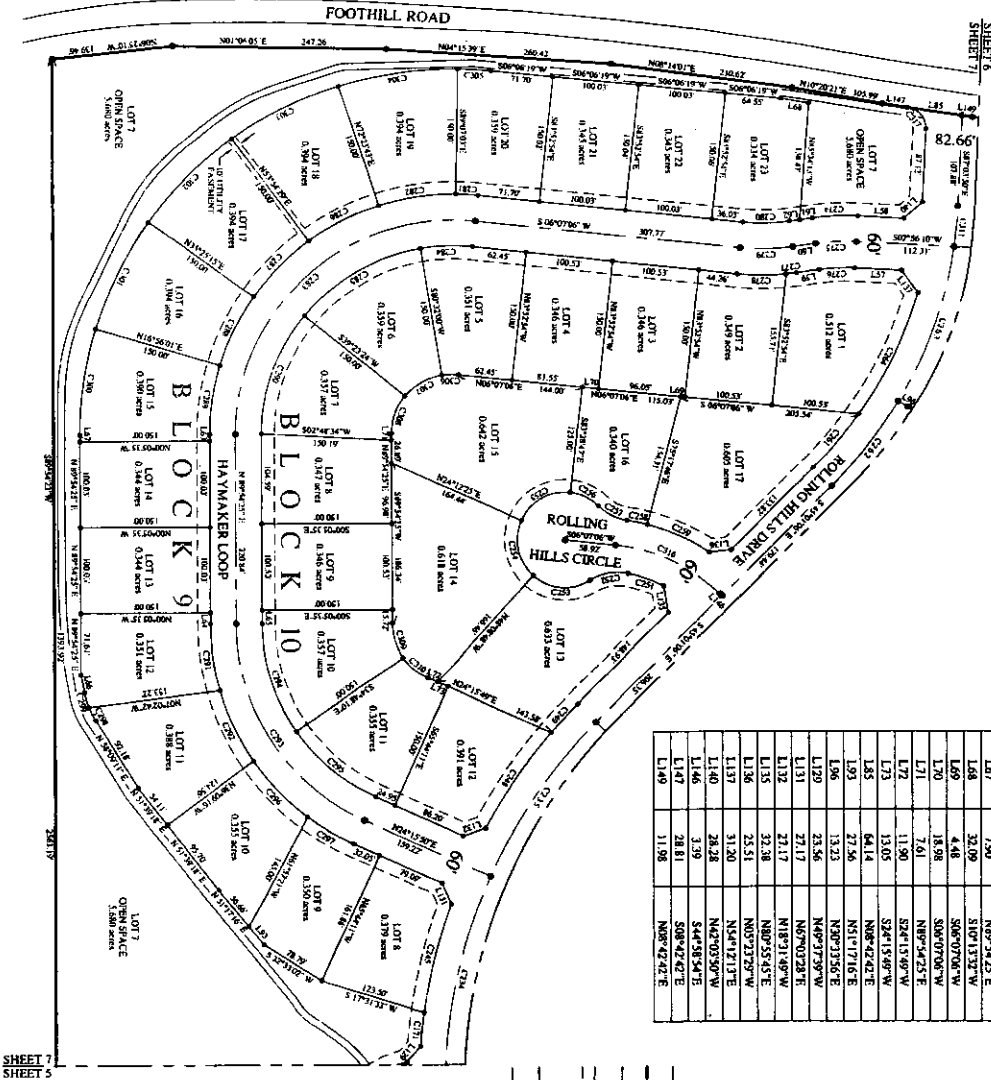


# FINAL PLAT OF BLACKTAIL RIDGE, PHASE I PART OF SECTION 8, T. 2N., R. 39E., B.M., BONNEVILLE COUNTY, IDAHO



LINE	LENGTH	BEARING
L1	33.86	S07°56'10"W
L2	53.28	S07°56'10"W
L3	26.57	S07°52'08"E
L4	26.57	N07°52'08"W
L5	14.78	S07°53'08"E
L6	11.78	S07°53'08"E
L7	7.90	N09°42'32"E
L8	12.88	N09°42'32"E
L9	13.72	N09°42'32"E
L10	21.32	N09°42'32"E
L11	7.90	S07°53'08"E
L12	32.09	S07°53'08"E
L13	4.48	S06°07'00"W
L14	18.98	S06°07'00"W
L15	7.61	N09°42'32"E
L16	11.90	S24°15'49"W
L17	13.05	N08°42'42"E
L18	64.14	N08°42'42"E
L19	27.56	N15°17'16"E
L20	13.22	N09°31'55"E
L21	23.56	N49°31'59"W
L22	21.17	N07°02'28"E
L23	27.17	N18°31'49"W
L24	32.38	N09°53'43"E
L25	25.51	N09°53'43"E
L26	31.20	N34°17'13"E
L27	28.28	N42°03'30"W
L28	3.19	S44°58'54"E
L29	28.81	S08°42'42"E
L30	11.98	N09°42'42"E

### LEGEND

- Section Corner (As Needed)
- Quarter Corner (As Needed)
- Set 5/8" x 1/2" Iron Rod With Plastic Cap Stamped N.S. 10781
- Set 1/2" x 3/4" Iron Rod With Plastic Cap Stamped S.S. 10781
- Point 1/2" Iron Rod With Plastic Cap (As Needed)
- Section Line
- Subdivision Boundary
- Lot Line
- Utility Statements are Filed (15' Buffer for All Lines Along Edge of All Lots unless stated otherwise)
- Match Line
- Concurrent Right-of-Way

First American Title Company  
 Idaho Falls, ID 83404

While this is a photographic reproduction of the recorded plat, the company assumes no liability for variations, if any, with a re-survey.

CURVE	RADIUS	DELTA	LENGTH	CHORD	CHORD BEARING
C111	600.00	3°12'21"	39.83	39.82	S73°41'59"E
C112	600.00	23°59'22"	231.30	248.42	S73°41'59"E
C113	600.00	20°43'05"	216.96	215.78	S55°22'28"E
C114	600.00	11°36'26"	131.29	131.06	S76°37'06"E
C115	600.00	12°11'23"	134.03	133.78	S55°19'47"E
C116	600.00	4°06'59"	45.26	45.25	S47°04'35"E
C117	170.00	14°34'18"	43.23	43.12	S19°32'27"W
C118	60.00	44°10'15"	46.26	43.12	S09°46'50"E
C119	55.00	73°43'09"	70.77	63.98	N04°59'37"E
C120	55.00	72°18'48"	66.45	64.93	N78°01'49"E
C121	55.00	38°19'55"	36.80	36.11	S35°41'11"W
C122	60.00	34°09'28"	37.66	37.24	N52°46'27"E
C123	230.00	8°02'34"	24.12	24.11	S11°41'57"W
C124	230.00	19°21'54"	78.41	78.03	S24°28'11"W
C125	470.00	9°58'31"	181.83	181.72	N50°00'21"W
C126	500.00	14°24'58"	123.80	123.47	N07°30'57"W
C127	500.00	22°09'23"	191.28	192.17	N07°30'57"W
C128	470.00	19°32'08"	160.25	159.48	N64°45'40"W
C129	280.00	10°48'18"	52.80	52.72	S02°27'59"E
C130	250.00	10°48'18"	47.15	47.08	S02°27'59"E
C131	220.00	10°48'18"	41.49	41.43	S02°27'59"E
C132	280.00	2°22'13"	11.70	11.70	N06°40'19"E
C133	280.00	11°23'56"	56.66	56.56	N06°40'19"E
C134	250.00	13°29'14"	61.03	60.88	N09°52'31"W
C135	280.00	13°29'14"	57.37	57.32	N09°52'31"W
C136	280.00	5°14'09"	25.39	25.28	S07°50'02"W
C137	280.00	16°29'14"	49.35	49.25	S08°21'40"E
C138	280.00	18°29'14"	50.35	50.25	S44°58'54"E
C139	280.00	18°29'14"	50.35	50.25	S44°58'54"E
C140	280.00	18°29'14"	50.35	50.25	S44°58'54"E
C141	280.00	18°29'14"	50.35	50.25	S44°58'54"E
C142	280.00	18°29'14"	50.35	50.25	S44°58'54"E
C143	280.00	18°29'14"	50.35	50.25	S44°58'54"E
C144	280.00	18°29'14"	50.35	50.25	S44°58'54"E
C145	280.00	18°29'14"	50.35	50.25	S44°58'54"E
C146	280.00	18°29'14"	50.35	50.25	S44°58'54"E
C147	280.00	18°29'14"	50.35	50.25	S44°58'54"E
C148	280.00	18°29'14"	50.35	50.25	S44°58'54"E
C149	280.00	18°29'14"	50.35	50.25	S44°58'54"E
C150	280.00	18°29'14"	50.35	50.25	S44°58'54"E
C151	280.00	18°29'14"	50.35	50.25	S44°58'54"E
C152	280.00	18°29'14"	50.35	50.25	S44°58'54"E
C153	280.00	18°29'14"	50.35	50.25	S44°58'54"E
C154	280.00	18°29'14"	50.35	50.25	S44°58'54"E
C155	280.00	18°29'14"	50.35	50.25	S44°58'54"E
C156	280.00	18°29'14"	50.35	50.25	S44°58'54"E
C157	280.00	18°29'14"	50.35	50.25	S44°58'54"E
C158	280.00	18°29'14"	50.35	50.25	S44°58'54"E
C159	280.00	18°29'14"	50.35	50.25	S44°58'54"E
C160	280.00	18°29'14"	50.35	50.25	S44°58'54"E
C161	280.00	18°29'14"	50.35	50.25	S44°58'54"E
C162	280.00	18°29'14"	50.35	50.25	S44°58'54"E
C163	280.00	18°29'14"	50.35	50.25	S44°58'54"E
C164	280.00	18°29'14"	50.35	50.25	S44°58'54"E
C165	280.00	18°29'14"	50.35	50.25	S44°58'54"E
C166	280.00	18°29'14"	50.35	50.25	S44°58'54"E
C167	280.00	18°29'14"	50.35	50.25	S44°58'54"E
C168	280.00	18°29'14"	50.35	50.25	S44°58'54"E
C169	280.00	18°29'14"	50.35	50.25	S44°58'54"E
C170	280.00	18°29'14"	50.35	50.25	S44°58'54"E
C171	280.00	18°29'14"	50.35	50.25	S44°58'54"E
C172	280.00	18°29'14"	50.35	50.25	S44°58'54"E
C173	280.00	18°29'14"	50.35	50.25	S44°58'54"E
C174	280.00	18°29'14"	50.35	50.25	S44°58'54"E
C175	280.00	18°29'14"	50.35	50.25	S44°58'54"E
C176	280.00	18°29'14"	50.35	50.25	S44°58'54"E
C177	280.00	18°29'14"	50.35	50.25	S44°58'54"E
C178	280.00	18°29'14"	50.35	50.25	S44°58'54"E
C179	280.00	18°29'14"	50.35	50.25	S44°58'54"E
C180	280.00	18°29'14"	50.35	50.25	S44°58'54"E
C181	280.00	18°29'14"	50.35	50.25	S44°58'54"E
C182	280.00	18°29'14"	50.35	50.25	S44°58'54"E
C183	280.00	18°29'14"	50.35	50.25	S44°58'54"E
C184	280.00	18°29'14"	50.35	50.25	S44°58'54"E
C185	280.00	18°29'14"	50.35	50.25	S44°58'54"E
C186	280.00	18°29'14"	50.35	50.25	S44°58'54"E
C187	280.00	18°29'14"	50.35	50.25	S44°58'54"E
C188	280.00	18°29'14"	50.35	50.25	S44°58'54"E
C189	280.00	18°29'14"	50.35	50.25	S44°58'54"E
C190	280.00	18°29'14"	50.35	50.25	S44°58'54"E
C191	280.00	18°29'14"	50.35	50.25	S44°58'54"E
C192	280.00	18°29'14"	50.35	50.25	S44°58'54"E
C193	280.00	18°29'14"	50.35	50.25	S44°58'54"E
C194	280.00	18°29'14"	50.35	50.25	S44°58'54"E
C195	280.00	18°29'14"	50.35	50.25	S44°58'54"E
C196	280.00	18°29'14"	50.35	50.25	S44°58'54"E
C197	280.00	18°29'14"	50.35	50.25	S44°58'54"E
C198	280.00	18°29'14"	50.35	50.25	S44°58'54"E
C199	280.00	18°29'14"	50.35	50.25	S44°58'54"E
C200	280.00	18°29'14"	50.35	50.25	S44°58'54"E
C201	280.00	18°29'14"	50.35	50.25	S44°58'54"E
C202	280.00	18°29'14"	50.35	50.25	S44°58'54"E
C203	280.00	18°29'14"	50.35	50.25	S44°58'54"E
C204	280.00	18°29'14"	50.35	50.25	S44°58'54"E
C205	280.00	18°29'14"	50.35	50.25	S44°58'54"E
C206	280.00	18°29'14"	50.35	50.25	S44°58'54"E
C207	280.00	18°29'14"	50.35	50.25	S44°58'54"E
C208	280.00	18°29'14"	50.35	50.25	S44°58'54"E
C209	280.00	18°29'14"	50.35	50.25	S44°58'54"E
C210	280.00	18°29'14"	50.35	50.25	S44°58'54"E
C211	280.00	18°29'14"	50.35	50.25	S44°58'54"E
C212	280.00	18°29'14"	50.35	50.25	S44°58'54"E
C213	280.00	18°29'14"	50.35	50.25	S44°58'54"E
C214	280.00	18°29'14"	50.35	50.25	S44°58'54"E
C215	280.00	18°29'14"	50.35	50.25	S44°58'54"E
C216	280.00	18°29'14"	50.35	50.25	S44°58'54"E
C217	280.00	18°29'14"	50.35	50.25	S44°58'54"E
C218	280.00	18°29'14"	50.35	50.25	S44°58'54"E
C219	280.00	18°29'14"	50.35	50.25	S44°58'54"E
C220	280.00	18°29'14"	50.35	50.25	S44°58'54"E
C221	280.00	18°29'14"	50.35	50.25	S44°58'54"E
C222	280.00	18°29'14"	50.35	50.25	S44°58'54"E
C223	280.00	18°29'14"	50.35	50.25	S44°58'54"E
C224	280.00	18°29'14"	50.35	50.25	S44°58'54"E
C225	280.00	18°29'14"	50.35	50.25	S44°58'54"E
C226	280.00	18°29'14"	50.35	50.25	S44°58'54"E
C227	280.00	18°29'14"	50.35	50.25	S44°58'54"E
C228	280.00	18°29'14"	50.35	50.25	S44°58'54"E
C229	280.00	18°29'14"	50.35	50.25	S44°58'54"E
C230	280.00	18°29'14"	50.35	50.25	S44°58'54"E
C231	280.00	18°29'14"	50.35	50.25	S44°58'54"E
C232	280.00	18°29'14"	50.35	50.25	S44°58'54"E
C233	280.00	18°29'14"	50.35	50.25	S44°58'54"E
C234	280.00	18°29'14"	50.35	50.25	S44°58'54"E
C235	280.00	18°29'14"	50.35	50.25	S44°58'54"E
C236	280.00	18°29'14"	50.35	50.25	S44°58'54"E
C237	280.00	18°29'14"	50.35	50.25	S44°58'54"E
C238	280.00	18°29'14"	50.35	50.25	S44°58'54"E
C239	280.00	18°29'14"	50.35	50.25	S44°58'54"E
C240	280.00	18°29'14"	50.35	50.25	S44°58'54"E
C241	280.00	18°29'14"	50.35	50.25	S44°58'54"E
C242	280.00	18°29'14"	50.35	50.25	S44°58'54"E
C243	280.00	18°29'14"	50.35	50.25	S44°58'54"E
C244	280.00	18°29'14"	50.35	50.25	S44°58'54"E
C245	280.00	18°29'14"	50.35	50.25	S44°58'54"E
C246	280.00	18°29'14"	50.35	50.25	S44°58'54"E
C247	280.00	18°29'14"	50.35	50.25	S44°58'54"E
C248	280.00	18°29'14"	50.35	50.25	S44°58'54"E
C249	280.00	18°29'14"	50.35	50.25	S44°58'54"E
C250	280.00	18°29'14"	50.35	50.25	S44°58'54"E
C251	280.00	18°29'14"	50.35	50.25	S44°58'54"E
C252	280.00	18°29'14"	50.35	50.25	S44°58'54"E
C253	280.00	18°29'14"	50.35	50.25	S44°58'54"E
C254	280.00	18°29'14"	50.35	50.25	S44°58'54"E
C255	280.00	18°29'14"	50.35	50.25	S44°58'54"E
C256	280.00	18°29'14"	50.35		